



Rabbit Anti-KIAA1199 antibody

SL21528R

Product Name:	KIAA1199
Chinese Name:	Transmembrane protein2样蛋白抗体
Alias:	TMEM2L; IR2155535; KIAA1199 protein; CEMIP; CCSP1; CEMIP_HUMAN; Cell migration-inducing and hyaluronan-binding protein.
Organism Species:	Rabbit
Clonality:	Polyclonal
React Species:	Human,Mouse,Rat,Chicken,Dog,Pig,Cow,Horse,Rabbit,Zebrafish,Sheep,
Applications:	WB=1:500-2000ELISA=1:500-1000IHC-P=1:400-800IHC-F=1:400-800ICC=1:100-500IF=1:100-500 (Paraffin sections need antigen repair) not yet tested in other applications. optimal dilutions/concentrations should be determined by the end user.
Molecular weight:	109/150kDa
Cellular localization:	The nucleuscytoplasmicThe cell membraneExtracellular matrixSecretory protein
Form:	Lyophilized or Liquid
Concentration:	1mg/ml
immunogen:	KLH conjugated synthetic peptide derived from human KIAA1199:741-840/1361
Lsotype:	IgG
Purification:	affinity purified by Protein A
Storage Buffer:	0.01M TBS(pH7.4) with 1% BSA, 0.03% Proclin300 and 50% Glycerol.
Storage:	Store at -20 °C for one year. Avoid repeated freeze/thaw cycles. The lyophilized antibody is stable at room temperature for at least one month and for greater than a year when kept at -20°C. When reconstituted in sterile pH 7.4 0.01M PBS or diluent of antibody the antibody is stable for at least two weeks at 2-4 °C.
PubMed:	PubMed
Product Detail:	TMEM2L belongs to the TMEM2 family and contains 4 PbH1 repeats. It is expressed in the inner ear. It is expressed in cochlea and vestibule tissues and it may be involved in hearing. Defects in KIAA1199 may be a cause of non-syndromic hearing loss. It is also thought that KIAA1199 is a tumor suppressor that may be involved in establishing cellular mortality in normal human cells.

Function:

Mediates depolymerization of hyaluronic acid (HA) via the cell membrane-associated clathrin-coated pit endocytic pathway. Binds to hyaluronic acid. Hydrolyzes high molecular weight hyaluronic acid to produce an intermediate-sized product, a process that may occur through rapid vesicle endocytosis and recycling without intracytoplasmic accumulation or digestion in lysosomes. Involved in hyaluronan catabolism in the dermis of the skin and arthritic synovium. Positively regulates epithelial-mesenchymal transition (EMT), and hence tumor cell growth, invasion and cancer dissemination. In collaboration with HSPA5/BIP, promotes cancer cell migration in a calcium and PKC-dependent manner. May be involved in hearing.

Subunit:

Mediates depolymerization of hyaluronic acid (HA) via the cell membrane-associated clathrin-coated pit endocytic pathway. Binds to hyaluronic acid. Hydrolyzes high molecular weight hyaluronic acid to produce an intermediate-sized product, a process that may occur through rapid vesicle endocytosis and recycling without intracytoplasmic accumulation or digestion in lysosomes. Involved in hyaluronan catabolism in the dermis of the skin and arthritic synovium. Positively regulates epithelial-mesenchymal transition (EMT), and hence tumor cell growth, invasion and cancer dissemination. In collaboration with HSPA5/BIP, promotes cancer cell migration in a calcium and PKC-dependent manner. May be involved in hearing.

Subcellular Location:

Nucleus. Cytoplasm. Endoplasmic reticulum. Cell membrane. Membrane, clathrin-coated pit. Secreted. Note=Retained in the endoplasmic reticulum (ER) in a HSPA5/BIP-dependent manner. Colocalized with clathrin heavy chain/CLTC in clathrin-coated vesicles. Strongly detected in the cytoplasm of breast carcinoma cells, whereas poorly detected in adjacent normal epithelial cells, stromal cells, or benign breast tissues. Localized in the nucleus and cytoplasm of colon adenocarcinomas.

Tissue Specificity:

Expressed in dermal and in synovial fibroblasts. Strongly expressed in gastric cancers compared with the paired normal tissues. Strongly expressed in both ductal carcinoma and invasive breast cancer cells compared with benign epithelial cells (at protein level). Strongly expressed in brain, placenta, prostate, breast, lung and testis. Expressed in fibroblasts, epithelial cells and cancer cells. In ear, it is specifically expressed in inner ear. Expressed in cochlea and vestibule tissues. Strongly expressed in gastric cancers compared with the paired normal tissues. Strongly expressed in colon adenocarcinomas compared with normal colonic mucosas. Strongly expressed in breast cancer as compared to normal breast tissue.

Post-translational modifications:

N-glycosylated; glycosylation is not necessary for HA-binding.

Similarity:

Belongs to the TMEM2 family.

Contains 1 G8 domain.
Contains 4 PbH1 repeats.

SWISS:
Q8WUJ3

Gene ID:
57214

Database links:

[Entrez Gene: 57214](#)Human

[Omim: 608366](#)Human

[SwissProt: Q8WUJ3](#)Human

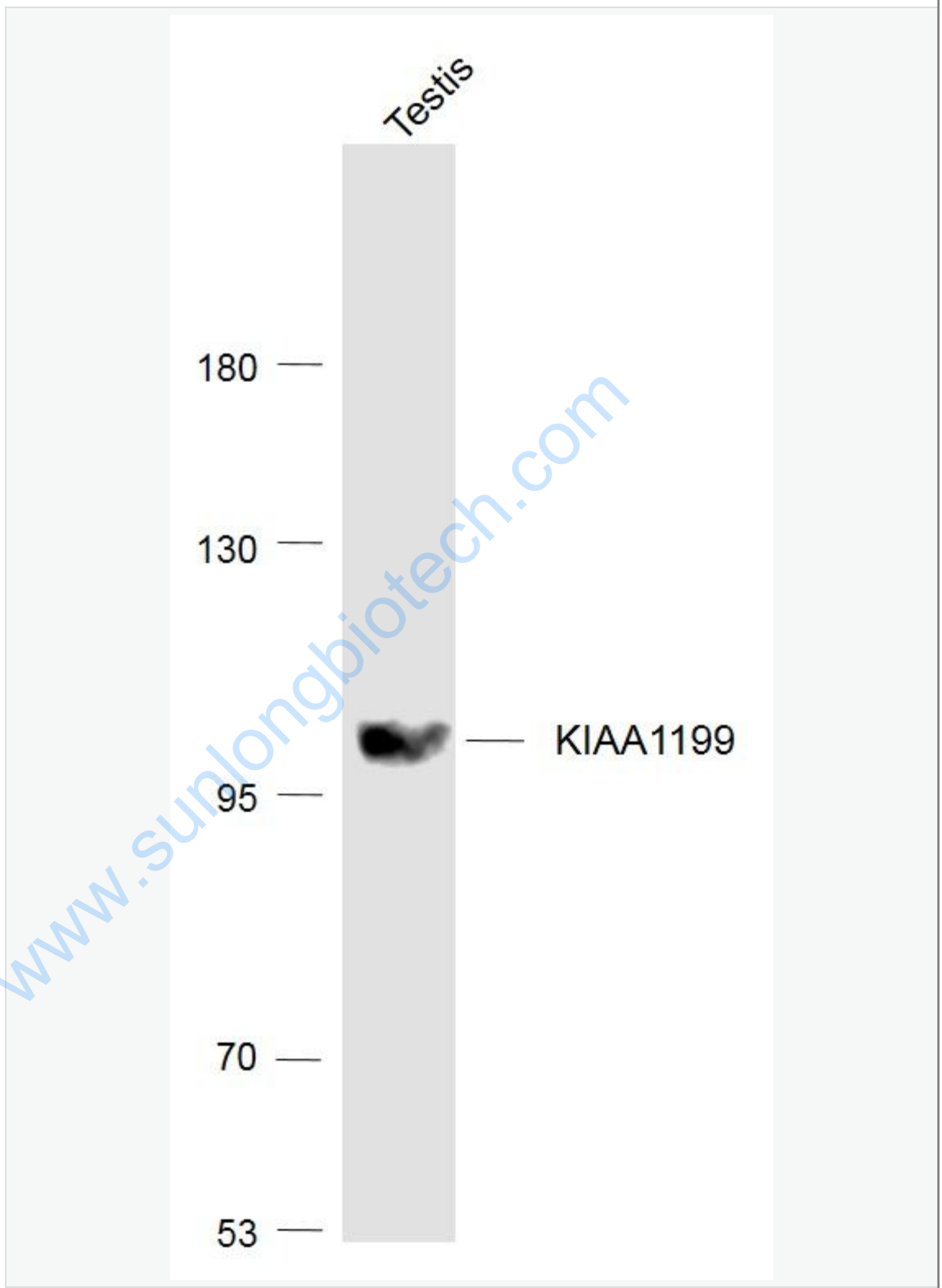
[SwissProt: Q8BI06](#)Mouse

Important Note:

This product as supplied is intended for research use only, not for use in human, therapeutic or diagnostic applications.

www.sunlongbiotech.com

Picture:



Sample:

Testis (Mouse) Lysate at 40 ug

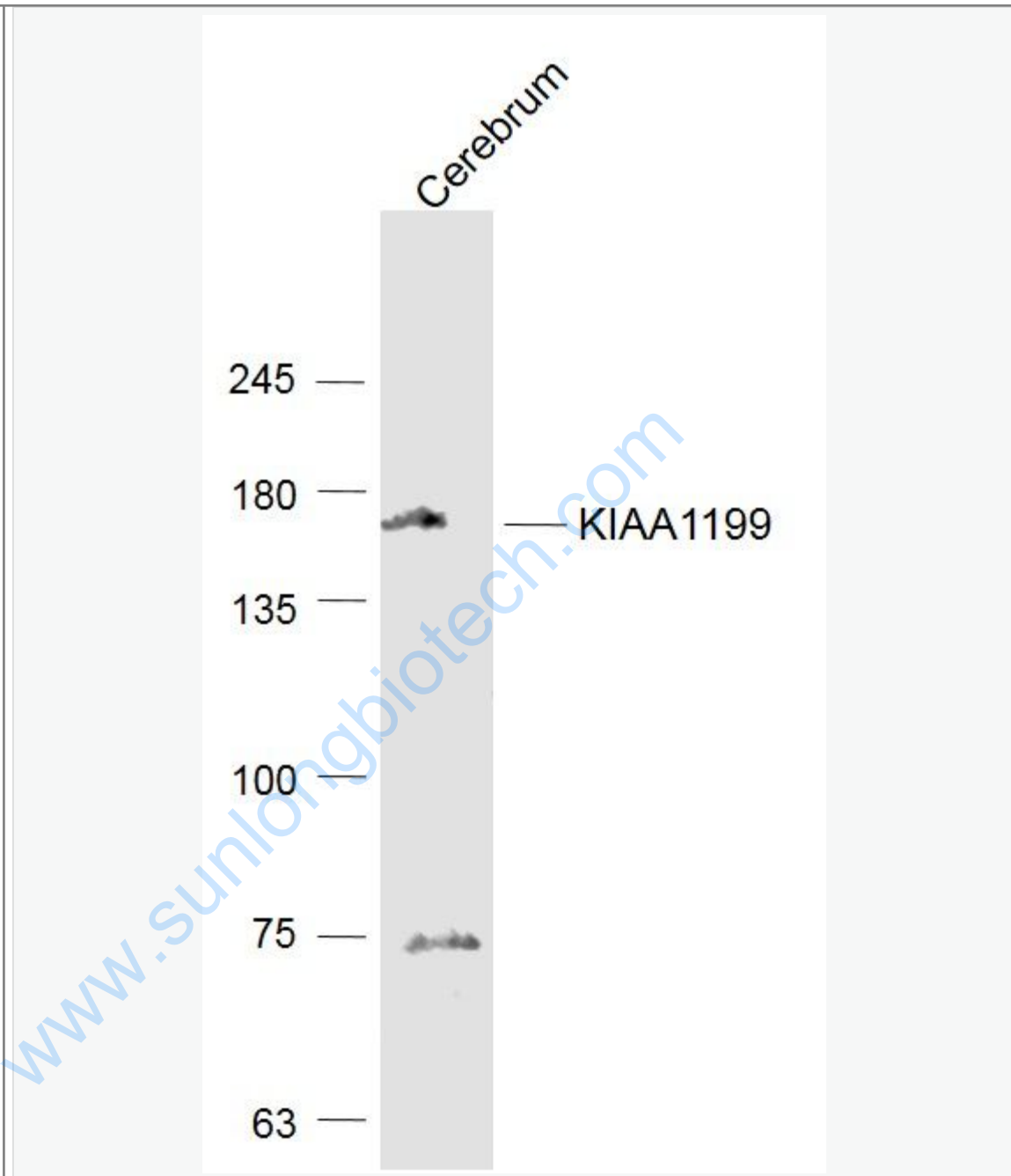
Primary: Anti-KIAA1199 (SL21528R) at 1/1000 dilution

Secondary: IRDye800CW Goat Anti-Rabbit IgG at 1/20000 dilution

Predicted band size: 109'150 kD

Observed band size: 109'150 kD

www.sunlongbiotech.com



Sample:

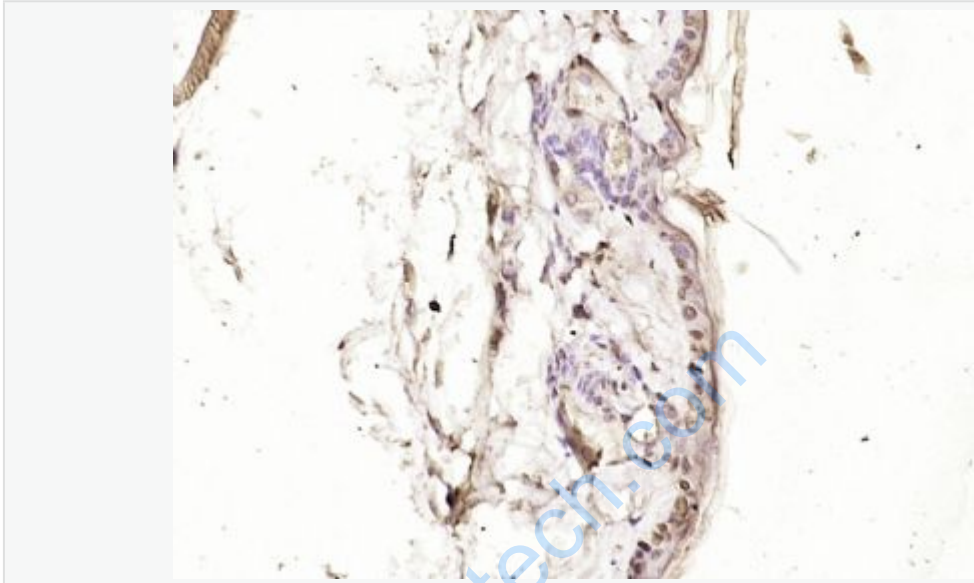
Cerebrum (Mouse) Lysate at 40 ug

Primary: Anti-KIAA1199 (SL21528R) at 1/1000 dilution

Secondary: IRDye800CW Goat Anti-Rabbit IgG at 1/20000 dilution

Predicted band size: 109'150 kD

Observed band size: 109'150 kD



Paraformaldehyde-fixed, paraffin embedded (mouse skin tissue); Antigen retrieval by boiling in sodium citrate buffer (pH6.0) for 15min; Block endogenous peroxidase by 3% hydrogen peroxide for 20 minutes; Blocking buffer (normal goat serum) at 37°C for 30min; Antibody incubation with (KIAA1199) Polyclonal Antibody, Unconjugated (SL21528R) at 1:200 overnight at 4°C, followed by operating according to SP Kit(Rabbit) (sp-0023) instructions and DAB staining.