



## Rabbit Anti-HATH6/Protein atonal homolog 8 antibody

SL21534R

<b>Product Name:</b>	HATH6/Protein atonal homolog 8
<b>Chinese Name:</b>	螺旋环螺旋转录因子HATH6抗体
<b>Alias:</b>	HATH6; 4933425C05Rik; HATH-6; HATH 6; ATOH8; ATOH8_HUMAN; Atonal homolog 6; atonal homolog 8 (Drosophila); Atonal homolog 8; Basic helix loop helix transcription factor 6; bHLHa21; Class A basic helix-loop-helix protein 21; FLJ14708; FLJ38730; hATH6; Helix loop helix protein mATH-6; Helix-loop-helix protein hATH-6; Math6; Okadin; Protein atonal homolog 8; RGD1561512.
<b>Organism Species:</b>	Rabbit
<b>Clonality:</b>	Polyclonal
<b>React Species:</b>	Mouse,Rat,
<b>Applications:</b>	WB=1:500-2000ELISA=1:500-1000IHC-P=1:400-800IHC-F=1:400-800ICC=1:100-500IF=1:100-500 (Paraffin sections need antigen repair) not yet tested in other applications. optimal dilutions/concentrations should be determined by the end user.
<b>Molecular weight:</b>	35kDa
<b>Cellular localization:</b>	The nucleus
<b>Form:</b>	Lyophilized or Liquid
<b>Concentration:</b>	1mg/ml
<b>immunogen:</b>	KLH conjugated synthetic peptide derived from mouse HATH6/Protein atonal homolog 8:1-100/322
<b>Lsotype:</b>	IgG
<b>Purification:</b>	affinity purified by Protein A
<b>Storage Buffer:</b>	0.01M TBS(pH7.4) with 1% BSA, 0.03% Proclin300 and 50% Glycerol.
<b>Storage:</b>	Store at -20 °C for one year. Avoid repeated freeze/thaw cycles. The lyophilized antibody is stable at room temperature for at least one month and for greater than a year when kept at -20°C. When reconstituted in sterile pH 7.4 0.01M PBS or diluent of antibody the antibody is stable for at least two weeks at 2-4 °C.
<b>PubMed:</b>	<a href="#">PubMed</a>

Putative transcription factor. May be implicated in specification and differentiation of neuronal cell lineages in the brain. May participate in kidney development and may be involved in podocyte differentiation.

**Function:**

Putative transcription factor. May be implicated in specification and differentiation of neuronal cell lineages in the brain. May participate in kidney development and may be involved in podocyte differentiation

**Subunit:**

Efficient DNA binding requires dimerization with another bHLH protein

**Subcellular Location:**

Nucleus.

**Tissue Specificity:**

Expressed in lung, liver, kidney, heart and pancreas. Expressed in endothel of umbilical vessels.

**Similarity:**

Contains 1 basic helix-loop-helix (bHLH) domain.

**SWISS:**

Q99NA2

**Gene ID:**

71093

**Database links:**

[Entrez Gene: 84913](#) Human

[Entrez Gene: 71093](#) Mouse

[Entrez Gene: 500200](#) Rat

[SwissProt: Q96SQ7](#) Human

[SwissProt: Q99NA2](#) Mouse

[Unigene: 135569](#) Human

[Unigene: 87449](#) Mouse

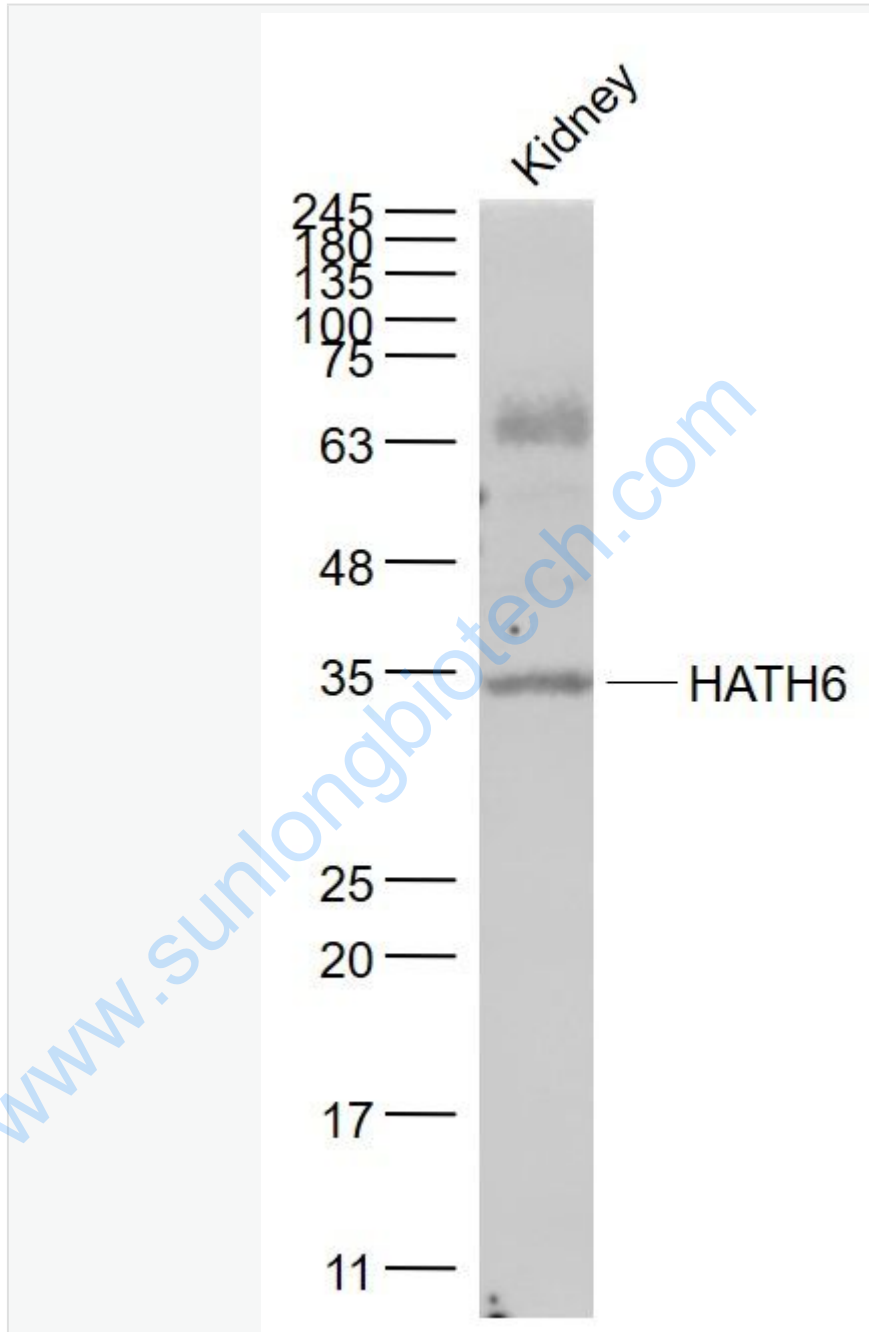
**Important Note:**

This product as supplied is intended for research use only, not for use in human,

**Product Detail:**

therapeutic or diagnostic applications.

Picture:



Sample:

Kidney (Mouse) Lysate at 40 ug

Primary: Anti- HATH6 (SL21534R) at 1/1000 dilution

Secondary: IRDye800CW Goat Anti-Rabbit IgG at 1/20000 dilution

Predicted band size: 35 kD

Observed band size: 35 kD

[www.sunlongbiotech.com](http://www.sunlongbiotech.com)