



Rabbit Anti-NPY1R antibody

SL21571R

Product Name:	NPY1R
Chinese Name:	神经肽Y1受体抗体
Alias:	neuropeptide Y1 receptor; Npy1r; neuropeptide Y receptor Y1; MGC109393; NPY-1; NPY1R_HUMAN.
Organism Species:	Rabbit
Clonality:	Polyclonal
React Species:	Human,Mouse,Rat,Chicken,Dog,Horse,Rabbit,
Applications:	WB=1:500-2000ELISA=1:500-1000 not yet tested in other applications. optimal dilutions/concentrations should be determined by the end user.
Molecular weight:	44kDa
Cellular localization:	The cell membrane
Form:	Lyophilized or Liquid
Concentration:	1mg/ml
immunogen:	KLH conjugated synthetic peptide derived from human NPY1R :311-384/384
Lsotype:	IgG
Purification:	affinity purified by Protein A
Storage Buffer:	0.01M TBS(pH7.4) with 1% BSA, 0.03% Proclin300 and 50% Glycerol.
Storage:	Store at -20 °C for one year. Avoid repeated freeze/thaw cycles. The lyophilized antibody is stable at room temperature for at least one month and for greater than a year when kept at -20°C. When reconstituted in sterile pH 7.4 0.01M PBS or diluent of antibody the antibody is stable for at least two weeks at 2-4 °C.
PubMed:	PubMed
Product Detail:	Neuropeptide Y (NPY) is one of the most abundant neuropeptides in the mammalian nervous system and exhibits a diverse range of important physiologic activities, including effects on psychomotor activity, food intake, regulation of central endocrine secretion, and potent vasoactive effects on the cardiovascular system. There are two major subtypes of NPY (Y1 and Y2). The NPY Y1 receptors have been identified in a variety of tissues, including brain, spleen, small intestine, kidney, testis, placenta, breast, colon, ganglion, heart, and aortic smooth muscle. The Y2 receptor is found mainly in

the central nervous system. NPY receptors are a member of the G protein-coupled receptor superfamily.

Function:

Receptor for neuropeptide Y and peptide YY. The rank order of affinity of this receptor for pancreatic polypeptides is NPY > [Pro-34] PYY, PYY and [Leu-31, Pro-34] NPY > NPY (2-36) > [Ile-31, Gln-34] PP and PYY (3-36) > PP > NPY free acid.

Subcellular Location:

Cell membrane.

Similarity:

Belongs to the G-protein coupled receptor 1 family.

SWISS:

P25929

Gene ID:

4886

Database links:

[Entrez Gene: 4886](#)Human

[Entrez Gene: 18166](#)Mouse

[Entrez Gene: 29358](#)Rat

[Oimim: 162641](#)Human

[SwissProt: P25929](#)Human

[SwissProt: Q04573](#)Mouse

[SwissProt: P21555](#)Rat

[Unigene: 519057](#)Human

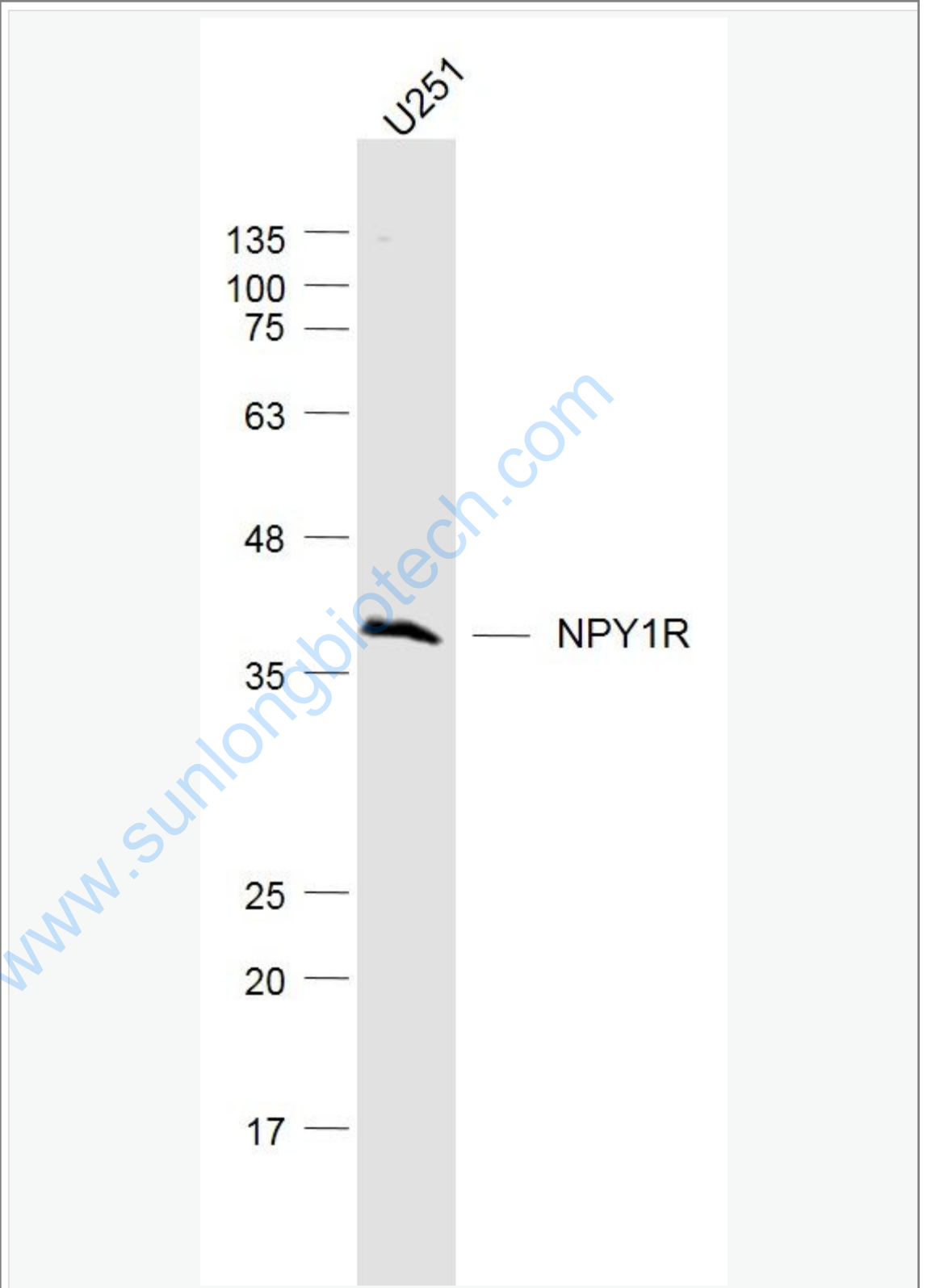
[Unigene: 5112](#)Mouse

[Unigene: 11642](#)Rat

Important Note:

This product as supplied is intended for research use only, not for use in human, therapeutic or diagnostic applications.

Picture:



Sample:

U251 (Human) Cell Lysate at 30 ug

Primary: Anti-NPY1R (SL21571R) at 1/1000 dilution

Secondary: IRDye800CW Goat Anti-Rabbit IgG at 1/20000 dilution

Predicted band size: 44 kD

Observed band size: 44 kD

www.sunlongbiotech.com