



Rabbit Anti-PRKD1/PKC mu antibody

SL21780R

Product Name:	PRKD1/PKC mu
Chinese Name:	蛋白激酶C mu型抗体
Alias:	nPKC D1; nPKC mu; nPKC-D1; nPKC-mu; nPKCD1; nPKCmu; PKC; PKC MU; PKCM; PKCmu; PKD 1; PRKD1; PKD; PKD1; PRKCM; PRKD 1; Prkd1; Protein kinase C mu; Protein kinase C mu type; Protein kinase D; Protein kinase D1; Serine/threonine protein kinase D1; Serine/threonine-protein kinase D1; KPCD1_HUMAN.
Organism Species:	Rabbit
Clonality:	Polyclonal
React Species:	Human,Mouse,Rat,Dog,Pig,Cow,Horse,Sheep,
Applications:	ELISA=1:500-1000IHC-P=1:400-800IHC-F=1:400-800ICC=1:100-500IF=1:100-500 (Paraffin sections need antigen repair) not yet tested in other applications. optimal dilutions/concentrations should be determined by the end user.
Molecular weight:	102kDa
Cellular localization:	cytoplasmicThe cell membrane
Form:	Lyophilized or Liquid
Concentration:	1mg/ml
immunogen:	KLH conjugated synthetic peptide derived from human PRKD1/PKC mu :191-290/912
Lsotype:	IgG
Purification:	affinity purified by Protein A
Storage Buffer:	0.01M TBS(pH7.4) with 1% BSA, 0.03% Proclin300 and 50% Glycerol.
Storage:	Store at -20 °C for one year. Avoid repeated freeze/thaw cycles. The lyophilized antibody is stable at room temperature for at least one month and for greater than a year when kept at -20°C. When reconstituted in sterile pH 7.4 0.01M PBS or diluent of antibody the antibody is stable for at least two weeks at 2-4 °C.
PubMed:	PubMed
Product Detail:	Members of the protein kinase C (PKC) family function in many extracellular receptor-mediated signal transduction pathways. See PRKCA (MIM 176960) for further background information. The PRKCM gene encodes a cytosolic serine-threonine kinase

that binds to the trans-Golgi network and regulates the fission of transport carriers specifically destined to the cell surface.[supplied by OMIM]

Function:

Converts transient diacylglycerol (DAG) signals into prolonged physiological effects, downstream of PKC. Involved in resistance to oxidative stress through activation of NF-kappa-B.

Similarity:

Belongs to the protein kinase superfamily. CAMK Ser/Thr protein kinase family. PKD subfamily.

Contains 1 PH domain.

Contains 2 phorbol-ester/DAG-type zinc fingers.

Contains 1 protein kinase domain.

SWISS:

Q15139

Gene ID:

5587

Database links:

[Entrez Gene: 5587](#) Human

[Entrez Gene: 18760](#) Mouse

[Entrez Gene: 85421](#) Rat

[Omim: 605435](#) Human

[SwissProt: Q15139](#) Human

[SwissProt: Q62101](#) Mouse

[SwissProt: Q9WTQ1](#) Rat

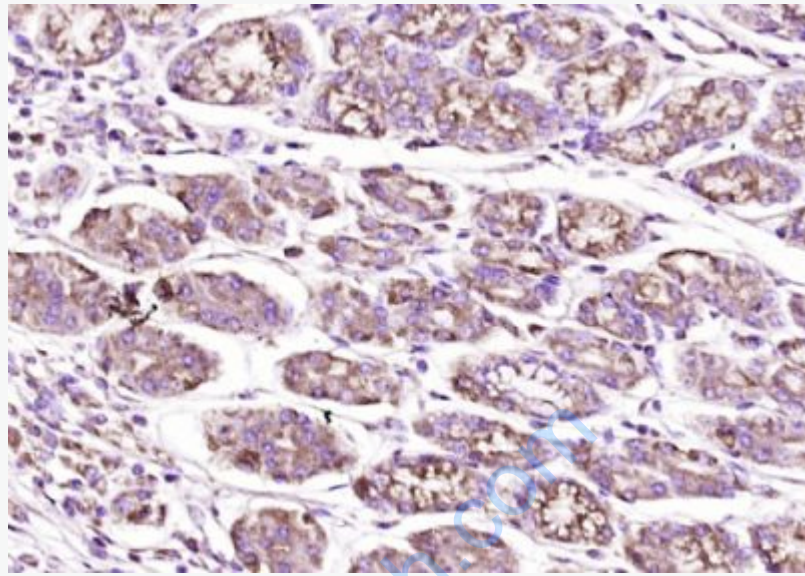
[Unigene: 508999](#) Human

[Unigene: 133719](#) Mouse

[Unigene: 144619](#) Rat

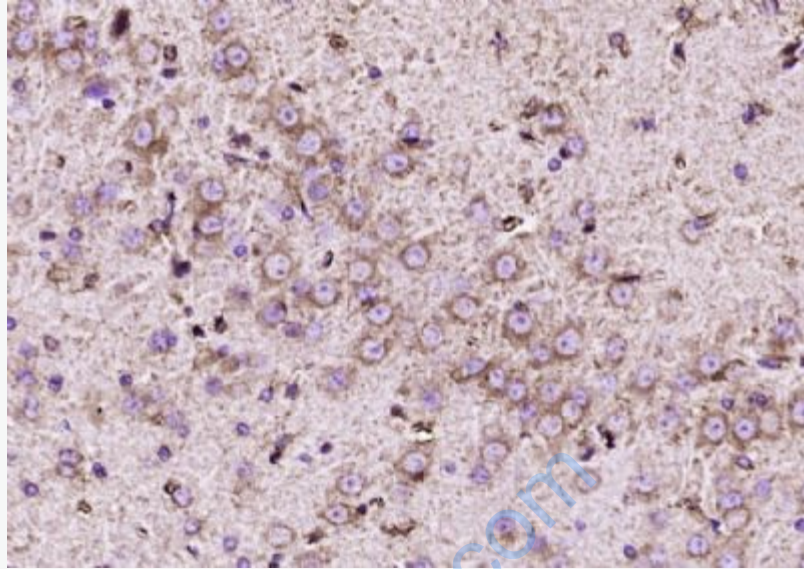
Important Note:

This product as supplied is intended for research use only, not for use in human, therapeutic or diagnostic applications.



Picture:

Paraformaldehyde-fixed, paraffin embedded (human gastric carcinoma); Antigen retrieval by boiling in sodium citrate buffer (pH6.0) for 15min; Block endogenous peroxidase by 3% hydrogen peroxide for 20 minutes; Blocking buffer (normal goat serum) at 37°C for 30min; Antibody incubation with (PRKD1 PKC mu) Polyclonal Antibody, Unconjugated (SL21780R) at 1:200 overnight at 4°C, followed by operating according to SP Kit(Rabbit) (sp-0023) instructions and DAB staining.



Paraformaldehyde-fixed, paraffin embedded (rat brain); Antigen retrieval by boiling in sodium citrate buffer (pH6.0) for 15min; Block endogenous peroxidase by 3% hydrogen peroxide for 20 minutes; Blocking buffer (normal goat serum) at 37°C for 30min; Antibody incubation with (PRKD1 PKC mu) Polyclonal Antibody, Unconjugated (SL21780R) at 1:200 overnight at 4°C, followed by operating according to SP Kit(Rabbit) (sp-0023) instructions and DAB staining.