



Rabbit Anti-SM22 Alpha antibody

SL2178R

Product Name:	SM22 Alpha
Chinese Name:	Cytoskeleton相关蛋白抗体
Alias:	22 kDa actin binding protein; 22 kDa actin-binding protein; Transgelin; DKFZp686P11128; Human 22kDa smooth muscle protein; Protein WS3-10; SM22 alpha; SM22; SM22-alpha; SMCC; Smooth muscle protein 22-alpha; TAGL_HUMAN; TAGLN; TAGLN1; transgelin; Transgelin variant 2; WS3 10; Protein WS3-10; WS3-10.
Organism Species:	Rabbit
Clonality:	Polyclonal
React Species:	Human,Mouse,Rat,Chicken,Dog,Pig,Cow,Horse,Rabbit,
Applications:	ELISA=1:500-1000IHC-P=1:400-800IHC-F=1:400-800Flow-Cyt=1ug/testICC=IF=1:100-500 (Paraffin sections need antigen repair) not yet tested in other applications. optimal dilutions/concentrations should be determined by the end user.
Molecular weight:	22kDa
Cellular localization:	cytoplasmic
Form:	Lyophilized or Liquid
Concentration:	1mg/ml
immunogen:	KLH conjugated synthetic peptide derived from human SM22 Alpha:101-201/201
Lsotype:	IgG
Purification:	affinity purified by Protein A
Storage Buffer:	0.01M TBS(pH7.4) with 1% BSA, 0.03% Proclin300 and 50% Glycerol.
Storage:	Store at -20 °C for one year. Avoid repeated freeze/thaw cycles. The lyophilized antibody is stable at room temperature for at least one month and for greater than a year when kept at -20°C. When reconstituted in sterile pH 7.4 0.01M PBS or diluent of antibody the antibody is stable for at least two weeks at 2-4 °C.
PubMed:	PubMed
Product Detail:	The protein encoded by this gene is a transformation and shape-change sensitive actin cross-linking/gelling protein found in fibroblasts and smooth muscle. Its expression is down-regulated in many cell lines, and this down-regulation may be an early and

sensitive marker for the onset of transformation. A functional role of this protein is unclear. Two transcript variants encoding the same protein have been found for this gene. [provided by RefSeq, Jul 2008]

Function:

Actin cross-linking/gelling protein. Involved in calcium interactions and contractile properties of the cell that may contribute to replicative senescence.

Subcellular Location:

Cytoplasm (Probable).

Similarity:

Belongs to the calponin family.
Contains 1 calponin-like repeat.
Contains 1 CH (calponin-homology) domain.

SWISS:

Q01995

Gene ID:

6876

Database links:

[Entrez Gene: 513463](#)Cow

[Entrez Gene: 6876](#)Human

[Entrez Gene: 8407](#)Human

[Entrez Gene: 21345](#)Mouse

[Entrez Gene: 25123](#)Rat

[Omim: 600818](#)Human

[SwissProt: Q9TS87](#)Cow

[SwissProt: Q01995](#)Human

[SwissProt: P37804](#)Mouse

[SwissProt: P31232](#)Rat

[Unigene: 410977](#)Human

[Unigene: 666842](#)Human

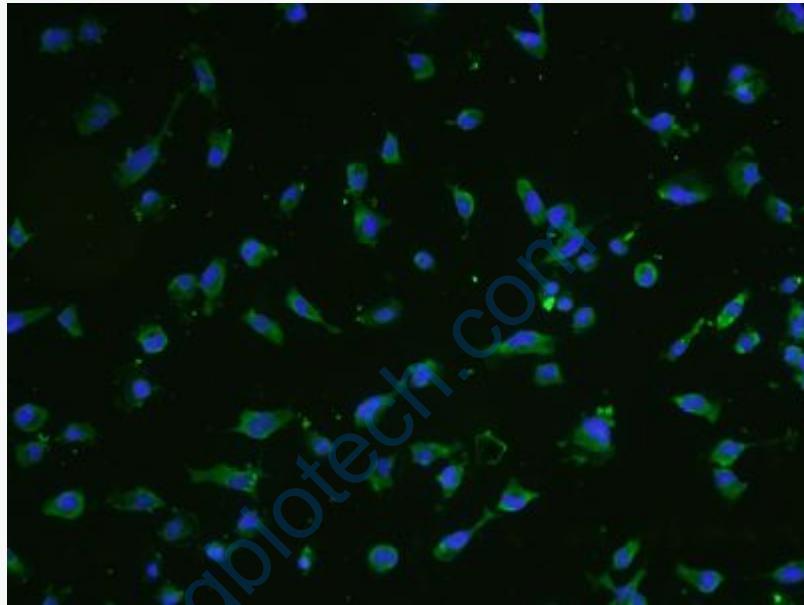
[Unigene: 283283](#)Mouse

[Unigene: 34397](#)Rat

Important Note:

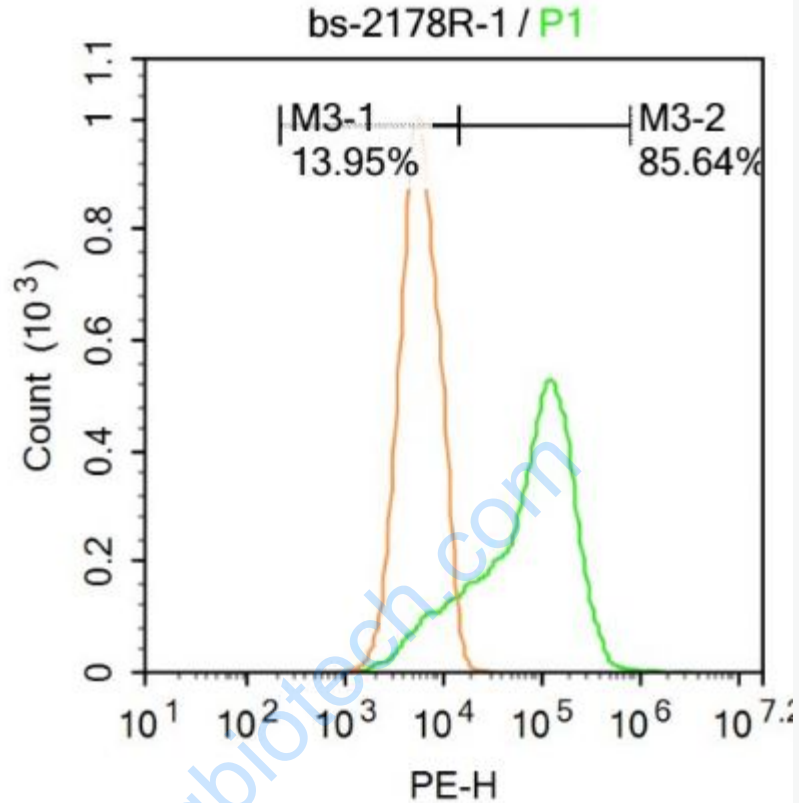
This product as supplied is intended for research use only, not for use in human, therapeutic or diagnostic applications.

SM22 α 蛋白是一种Cytoskeleton相关蛋白.



Picture:

Tissue/cell: U251 cell; 4% Paraformaldehyde-fixed; Triton X-100 at room temperature for 20 min; Blocking buffer (normal goat serum, C-0005) at 37°C for 20 min; Antibody incubation with (SM22 Alpha) Polyclonal Antibody, Unconjugated (SL2178R) 1:200, 90 minutes at 37°C; followed by a conjugated secondary antibody (SL2178R) at 37°C for 90 minutes, DAPI (5ug/ml, blue, C-0033) was used to stain the cell nuclei.



Blank control: Raji.

Primary Antibody (green line): Rabbit Anti-SM22 Alpha antibody (SL2178R)

Dilution: $1\mu\text{g}/10^6$ cells;

Isotype Control Antibody (orange line): Rabbit IgG .

Secondary Antibody : Goat anti-rabbit IgG-PE

Dilution: $1\mu\text{g}/\text{test}$.

Protocol

The cells were fixed with 4% PFA (10min at room temperature)and then permeabilized with PBST for 20 min at room temperature. The cells were then incubated in 5%BSA to block non-specific protein-protein interactions for 30 min at room temperature .Cells stained with Primary Antibody for 30 min at room

temperature. The secondary antibody used for 40 min at room temperature.

Acquisition of 20,000 events was performed.

www.sunlongbiotech.com