



Rabbit Anti-VMAT1 antibody

SL21800R

Product Name:	VMAT1
Chinese Name:	嗜铬颗粒胺TransporterVMAT1抗体
Alias:	Adrenal chromaffin granule amine transporter; CGAT; CGAT; Chromaffin granule amine transporter; SLC18A1; Solute carrier family 18 (vesicular monoamine), member 1; Solute carrier family 18 member 1; VAT 1; VAT1; Vesicular amine transporter 1; VMAT 1; VMAT1_HUMAN.
Organism Species:	Rabbit
Clonality:	Polyclonal
React Species:	Human,Mouse,Rat,
Applications:	WB=1:500-2000ELISA=1:500-1000 not yet tested in other applications. optimal dilutions/concentrations should be determined by the end user.
Molecular weight:	58kDa
Cellular localization:	cytoplasmicThe cell membrane
Form:	Lyophilized or Liquid
Concentration:	1mg/ml
immunogen:	KLH conjugated synthetic peptide derived from mouse VMAT1 :461-521/521
Lsotype:	IgG
Purification:	affinity purified by Protein A
Storage Buffer:	0.01M TBS(pH7.4) with 1% BSA, 0.03% Proclin300 and 50% Glycerol.
Storage:	Store at -20 °C for one year. Avoid repeated freeze/thaw cycles. The lyophilized antibody is stable at room temperature for at least one month and for greater than a year when kept at -20°C. When reconstituted in sterile pH 7.4 0.01M PBS or diluent of antibody the antibody is stable for at least two weeks at 2-4 °C.
PubMed:	PubMed
Product Detail:	The vesicular monoamine transporter acts to accumulate cytosolic monoamines into vesicles, using the proton gradient maintained across the vesicular membrane. Its proper function is essential to the correct activity of the monoaminergic systems that have been implicated in several human neuropsychiatric disorders. The transporter is a site of action of important drugs, including reserpine and tetrabenazine (Peter et al., 1993

[PubMed 7905859]). See also SLC18A2 (MIM 193001).[supplied by OMIM, Mar 2008].

Function:

Involved in the vesicular transport of biogenic amines.

Subcellular Location:

Cytoplasmic vesicle membrane; Multi-pass membrane protein.

Similarity:

Belongs to the major facilitator superfamily. Vesicular transporter family.

SWISS:

Q62465

Gene ID:

26949

Database links:

[Entrez Gene: 10493](#)Human

[Entrez Gene: 26949](#)Mouse

[Oimim: 604631](#)Human

[SwissProt: Q99536](#)Human

[SwissProt: Q62465](#)Mouse

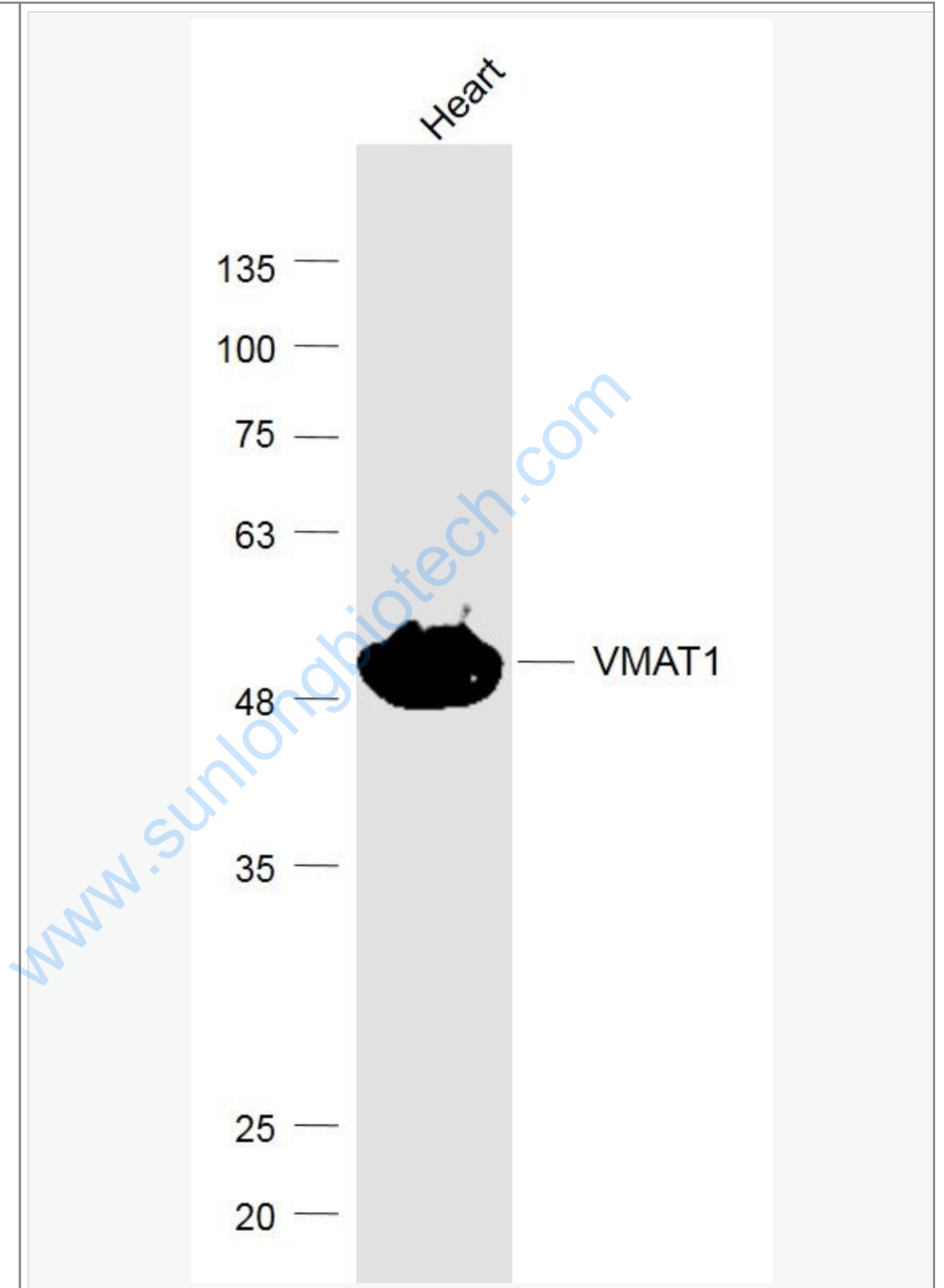
[Unigene: 514199](#)Human

[Unigene: 29210](#)Mouse

Important Note:

This product as supplied is intended for research use only, not for use in human, therapeutic or diagnostic applications.

Picture:



Sample:

Heart (Mouse) Lysate at 40 ug

Primary: Anti-VMAT1 (SL21800R) at 1/1000 dilution

Secondary: IRDye800CW Goat Anti-Rabbit IgG at 1/20000 dilution

Predicted band size: 58 kD

Observed band size: 58 kD

www.sunlongbiotech.com

Eye

135 —

100 —

75 —

63 —

48 —

35 —

25 —

20 —

— VMAT1

Sample:

www.sunlongbiotech.com

Eye (Mouse) Lysate at 40 ug

Primary: Anti-VMAT1 (SL21800R) at 1/1000 dilution

Secondary: IRDye800CW Goat Anti-Rabbit IgG at 1/20000 dilution

Predicted band size: 58 kD

Observed band size: 58 kD

www.sunlongbiotech.com