



## Rabbit Anti-Clathrin heavy chain antibody

SL21805R

<b>Product Name:</b>	Clathrin heavy chain
<b>Chinese Name:</b>	网格蛋白重链抗体
<b>Alias:</b>	CHC17; Clathrin heavy chain 1; Clathrin heavy chain 2; Clathrin heavy chain; Clathrin heavy chain like 1; Clathrin heavy chain on chromosome 17; Clathrin heavy polypeptide; CLH 17; CLH 22; CLH-17; CLH1_HUMAN; CLH17; CLH22; CLTC; CLTCL; CLTCL1; CLTCL2; CLTD; Hc; KIAA0034.
<b>Organism Species:</b>	Rabbit
<b>Clonality:</b>	Polyclonal
<b>React Species:</b>	Human,Mouse,Rat,Chicken,Pig,Horse,Rabbit,Sheep,
<b>Applications:</b>	ELISA=1:500-1000IHC-P=1:400-800IHC-F=1:400-800ICC=1:100-500IF=1:100-500 (Paraffin sections need antigen repair) not yet tested in other applications. optimal dilutions/concentrations should be determined by the end user.
<b>Molecular weight:</b>	91-190-146/1675 kDa
<b>Cellular localization:</b>	cytoplasmicThe cell membrane
<b>Form:</b>	Lyophilized or Liquid
<b>Concentration:</b>	1mg/ml
<b>immunogen:</b>	KLH conjugated synthetic peptide derived from human Clathrin heavy chain :
<b>Lsotype:</b>	IgG
<b>Purification:</b>	affinity purified by Protein A
<b>Storage Buffer:</b>	0.01M TBS(pH7.4) with 1% BSA, 0.03% Proclin300 and 50% Glycerol.
<b>Storage:</b>	Store at -20 °C for one year. Avoid repeated freeze/thaw cycles. The lyophilized antibody is stable at room temperature for at least one month and for greater than a year when kept at -20°C. When reconstituted in sterile pH 7.4 0.01M PBS or diluent of antibody the antibody is stable for at least two weeks at 2-4 °C.
<b>PubMed:</b>	<a href="#">PubMed</a>
<b>Product Detail:</b>	Clathrin is a major protein component of the cytoplasmic face of intracellular organelles, called coated vesicles and coated pits. These specialized organelles are involved in the intracellular trafficking of receptors and endocytosis of a variety of macromolecules. The basic subunit of the clathrin coat is composed of three heavy chains and three light

chains. [provided by RefSeq, Jul 2008].

**Function:**

Clathrin is the major protein of the polyhedral coat of coated pits and vesicles. Two different adapter protein complexes link the clathrin lattice either to the plasma membrane or to the trans-Golgi network.

**Subunit:**

Clathrin triskelions, composed of 3 heavy chains and 3 light chains, are the basic subunits of the clathrin coat. In the presence of light chains, hub assembly is influenced by both the pH and the concentration of calcium. Interacts with HIP1. Interacts with DENND1A, DENND1B and DENND1C (By similarity). May interact with OCRL. Interacts with ERBB2 (By similarity).

**Subcellular Location:**

Cytoplasmic vesicle membrane. Membrane > coated pit. Melanosome. Cytoplasmic face of coated pits and vesicles. Identified by mass spectrometry in melanosome fractions from stage I to stage IV.

**Similarity:**

Belongs to the clathrin heavy chain family.  
Contains 7 CHCR (clathrin heavy-chain) repeats.

**SWISS:**

Q00610

**Gene ID:**

1213

**Database links:**

[Entrez Gene: 1213](#)Human

[Entrez Gene: 67300](#)Mouse

[Entrez Gene: 54241](#)Rat

[Omim: 118955](#)Human

[SwissProt: Q00610](#)Human

[SwissProt: Q68FD5](#)Mouse

[SwissProt: P11442](#)Rat

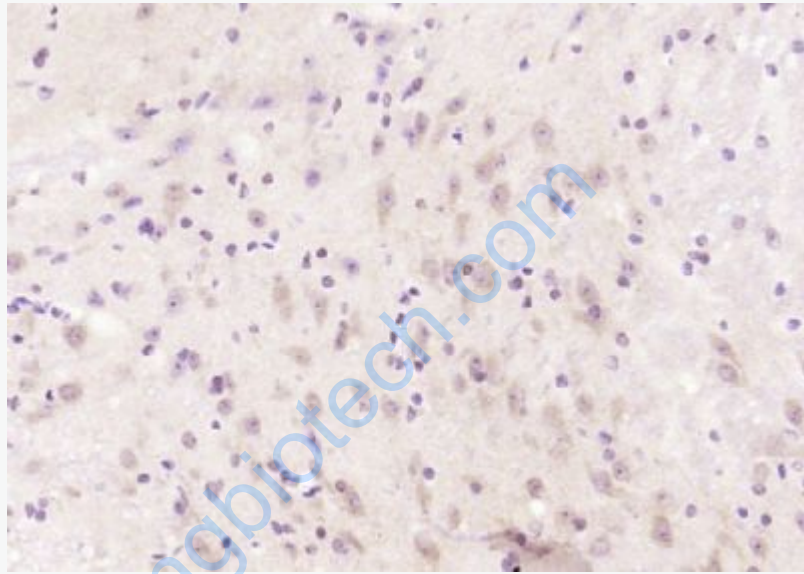
[Unigene: 491351](#)Human

[Unigene: 479526](#)Mouse

[Unigene: 3589](#)Rat

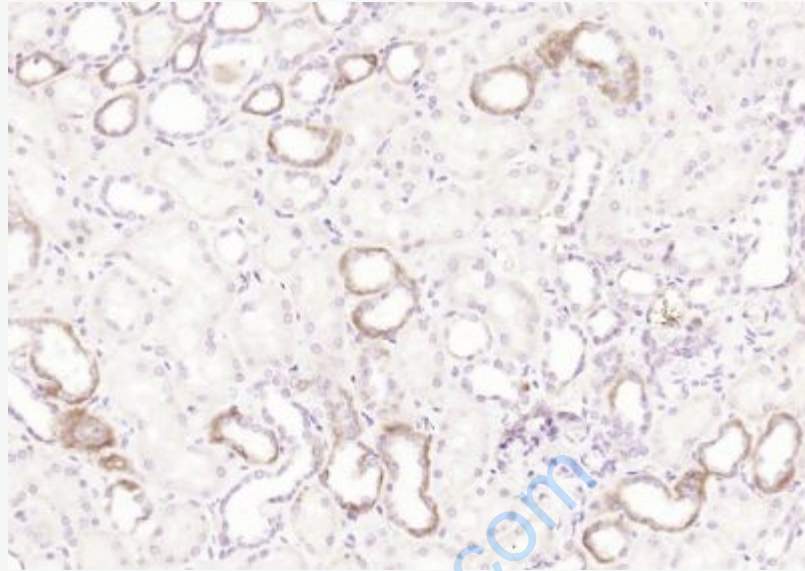
**Important Note:**

This product as supplied is intended for research use only, not for use in human, therapeutic or diagnostic applications.



**Picture:**

Paraformaldehyde-fixed, paraffin embedded (mouse brain); Antigen retrieval by boiling in sodium citrate buffer (pH6.0) for 15min; Block endogenous peroxidase by 3% hydrogen peroxide for 20 minutes; Blocking buffer (normal goat serum) at 37°C for 30min; Antibody incubation with (Clathrin heavy chain) Polyclonal Antibody, Unconjugated (SL21805R) at 1:400 overnight at 4°C, followed by operating according to SP Kit(Rabbit) (sp-0023) instructions and DAB staining.



Paraformaldehyde-fixed, paraffin embedded (Human kidney); Antigen retrieval by boiling in sodium citrate buffer (pH6.0) for 15min; Block endogenous peroxidase by 3% hydrogen peroxide for 20 minutes; Blocking buffer (normal goat serum) at 37°C for 30min; Antibody incubation with (Clathrin heavy chain) Polyclonal Antibody, Unconjugated (SL21805R) at 1:400 overnight at 4°C, followed by operating according to SP Kit(Rabbit) (sp-0023) instructions and DAB staining.