



Rabbit Anti-EDG8 antibody

SL21807R

Product Name:	EDG8
Chinese Name:	endothelial cells分化G protein-coupled receptor8抗体
Alias:	EDG 8; Endothelial differentiation G protein coupled receptor 8; Endothelial differentiation G-protein-coupled receptor 8; Endothelial Differentiation Gene 8; Endothelial differentiation sphingolipid G protein coupled receptor 8; S1P receptor 5; S1P receptor Edg 8; S1P receptor Edg-8; S1P receptor Edg8; S1P5; S1PR5; S1PR5_HUMAN; Sphingosine 1 Phosphate Receptor 5; Sphingosine 1 phosphate receptor Edg 8; Sphingosine 1 phosphate receptor Edg8; Sphingosine 1-phosphate receptor 5; Sphingosine 1-phosphate receptor Edg-8; SPPR 1; SPPR 2; SPPR1; SPPR2.
Organism Species:	Rabbit
Clonality:	Polyclonal
React Species:	Human,Mouse,Rat,Dog,Pig,
Applications:	ELISA=1:500-1000IHC-P=1:400-800IHC-F=1:400-800ICC=1:100-500IF=1:100-500 (Paraffin sections need antigen repair) not yet tested in other applications. optimal dilutions/concentrations should be determined by the end user.
Molecular weight:	42kDa
Cellular localization:	The cell membrane
Form:	Lyophilized or Liquid
Concentration:	1mg/ml
immunogen:	KLH conjugated synthetic peptide derived from human EDG8 :1-100/398<Extracellular>
Lsotype:	IgG
Purification:	affinity purified by Protein A
Storage Buffer:	0.01M TBS(pH7.4) with 1% BSA, 0.03% Proclin300 and 50% Glycerol.
Storage:	Store at -20 °C for one year. Avoid repeated freeze/thaw cycles. The lyophilized antibody is stable at room temperature for at least one month and for greater than a year when kept at -20°C. When reconstituted in sterile pH 7.4 0.01M PBS or diluent of antibody the antibody is stable for at least two weeks at 2-4 °C.
PubMed:	PubMed

The EDG (endothelial differentiation gene) family of G protein coupled receptors consists of eight family members that bind lysophospholipid (LPL) mediators, including sphingosine-1-phosphate (SPP) and lysophosphatidic acid (LPA). EDG-1, EDG-3, EDG-5 (also designated H218 and AGR16) and EDG-8 bind SPP with high affinity. EDG-6 is a low affinity receptor for SPP. LPA preferentially binds to EDG-2, EDG-4 and EDG-7. The EDG receptors couple to multiple G proteins to signal through Ras, MAP kinase, Rho, Phospholipase C or other tyrosine kinases, which lead to cell survival, growth, migration and differentiation. EDG-1 signals through Gi proteins to activate Akt and is expressed in glioma cells. EDG-2 is expressed in brain, especially in white matter tract regions, while EDG-3 is expressed in cardiovascular tissue and in cerebellum. EDG-4 is highly expressed on leukocytes and brain, and EDG-5 has wide tissue distribution, including cardiovascular tissue and brain. EDG-6, which is expressed in lymphoid and hematopoietic tissues and in lung, signals through Gi/o proteins, which activate growth related pathways.

Function:

Receptor for the lysosphingolipid sphingosine 1-phosphate (S1P). S1P is a bioactive lysophospholipid that elicits diverse physiological effect on most types of cells and tissues. Is coupled to both the G(i/o)alpha and G(12) subclass of heteromeric G-proteins (By similarity). May play a regulatory role in the transformation of radial glial cells into astrocytes and may affect proliferative activity of these cells.

Subcellular Location:

Cell membrane; Multi-pass membrane protein

Tissue Specificity:

Widely expressed in the brain, most prominently in the corpus callosum, which is predominantly white matter. Detected in spleen, peripheral blood leukocytes, placenta, lung, aorta and fetal spleen. Low-level signal detected in many tissue extracts. Overexpressed in leukemic large granular lymphocytes. Isoform 1 is predominantly expressed in peripheral tissues. Isoform 2 is expressed in brain, spleen and peripheral blood leukocytes.

Similarity:

Belongs to the G-protein coupled receptor 1 family.

SWISS:

Q9H228

Gene ID:

53637

Database links:

[Entrez Gene: 53637](#)Human

[Entrez Gene: 94226](#)Mouse

Product Detail:

[Entrez Gene: 100141401](#)Pig

[Entrez Gene: 60399](#)Rat

[Omim: 605146](#)Human

[SwissProt: Q9H228](#)Human

[SwissProt: Q91X56](#)Mouse

[SwissProt: Q684M3](#)Pig

[SwissProt: Q9JKM5](#)Rat

[Unigene: 501561](#)Human

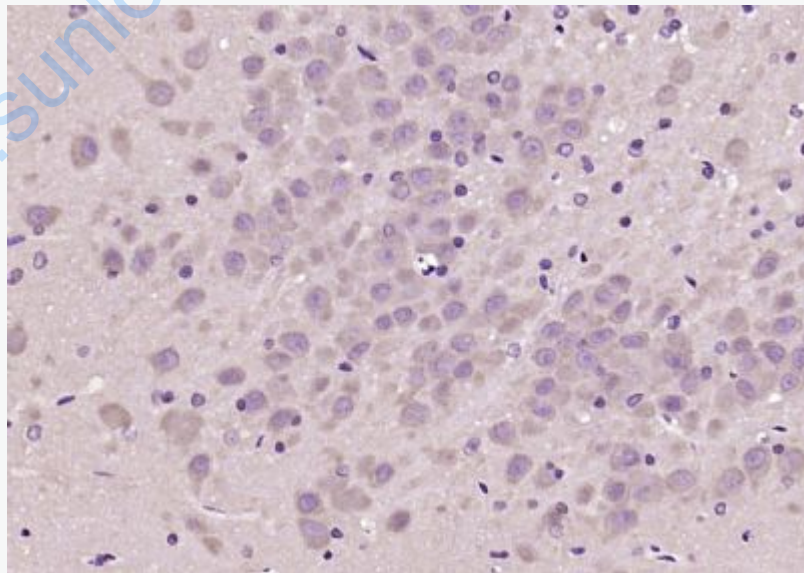
[Unigene: 190619](#)Mouse

[Unigene: 45601](#)Rat

Important Note:

This product as supplied is intended for research use only, not for use in human, therapeutic or diagnostic applications.

Picture:



Paraformaldehyde-fixed, paraffin embedded (rat brain); Antigen retrieval by boiling in sodium citrate buffer (pH6.0) for 15min; Block endogenous peroxidase by 3%

hydrogen peroxide for 20 minutes; Blocking buffer (normal goat serum) at 37°C for 30min; Antibody incubation with (EDG8) Polyclonal Antibody, Unconjugated (SL21807R) at 1:200 overnight at 4°C, followed by operating according to SP Kit(Rabbit) (sp-0023) instructions and DAB staining.

www.sunlongbiotech.com