



Rabbit Anti-CK II beta antibody

SL21820R

Product Name:	CK II beta
Chinese Name:	丝/苏氨酸蛋白激酶II β抗体(casein kinase IIβ)
Alias:	Casein kinase 2 beta polypeptide; casein kinase IIβ; Casein kinase II subunit beta; CK II beta; CK2B; CK2N; CSK2B; CSK2B_HUMAN; CSNK 2B; CSNK2B; G5A; MGC138222; MGC138224; Phosvitin; Protein G5a.
Organism Species:	Rabbit
Clonality:	Polyclonal
React Species:	Human,Mouse,Rat,Chicken,Pig,Cow,Horse,Rabbit,Sheep,
Applications:	ELISA=1:500-1000IHC-P=1:400-800IHC-F=1:400-800ICC=1:100-500IF=1:100-500 (Paraffin sections need antigen repair) not yet tested in other applications. optimal dilutions/concentrations should be determined by the end user.
Molecular weight:	25kDa
Cellular localization:	The nucleuscytoplasmicThe cell membraneExtracellular matrixSecretory protein
Form:	Lyophilized or Liquid
Concentration:	1mg/ml
immunogen:	KLH conjugated synthetic peptide derived from human CK II beta:121-215/215
Lsotype:	IgG
Purification:	affinity purified by Protein A
Storage Buffer:	0.01M TBS(pH7.4) with 1% BSA, 0.03% Proclin300 and 50% Glycerol.
Storage:	Store at -20 °C for one year. Avoid repeated freeze/thaw cycles. The lyophilized antibody is stable at room temperature for at least one month and for greater than a year when kept at -20°C. When reconstituted in sterile pH 7.4 0.01M PBS or diluent of antibody the antibody is stable for at least two weeks at 2-4 °C.
PubMed:	PubMed
Product Detail:	This gene encodes the beta subunit of casein kinase II, a ubiquitous protein kinase which regulates metabolic pathways, signal transduction, transcription, translation, and replication. The enzyme is composed of three subunits, alpha, alpha prime and beta, which form a tetrameric holoenzyme. The alpha and alpha prime subunits are catalytic, while the beta subunit serves regulatory functions. The enzyme localizes to the

endoplasmic reticulum and the Golgi apparatus. [provided by RefSeq, Jul 2008].

Function:

Participates in Wnt signaling. Plays a complex role in regulating the basal catalytic activity of the alpha subunit.

Subunit:

Tetramer composed of an alpha subunit, an alpha' subunit and two beta subunits. The beta subunit dimerization is mediated by zinc ions. Interacts with TCTEX1D3 (By similarity). Interacts with CD163. Also component of a CK2-SPT16-SSRP1 complex composed of SSRP1, SUPT16H, CSNK2A1, CSNK2A2 and CSNK2B, the complex associating following UV irradiation. Interacts with MUSK; mediates phosphorylation of MUSK by CK2.

Post-translational modifications:

Phosphorylated by alpha subunit.

Similarity:

Belongs to the casein kinase 2 subunit beta family.

SWISS:

P67870

Gene ID:

1460

Database links:

[Entrez Gene: 1460](#)Human

[Entrez Gene: 13001](#)Mouse

[Entrez Gene: 81650](#)Rat

[Omim: 115441](#)Human

[SwissProt: P67870](#)Human

[SwissProt: P67871](#)Mouse

[SwissProt: P67874](#)Rat

[Unigene: 73527](#)Human

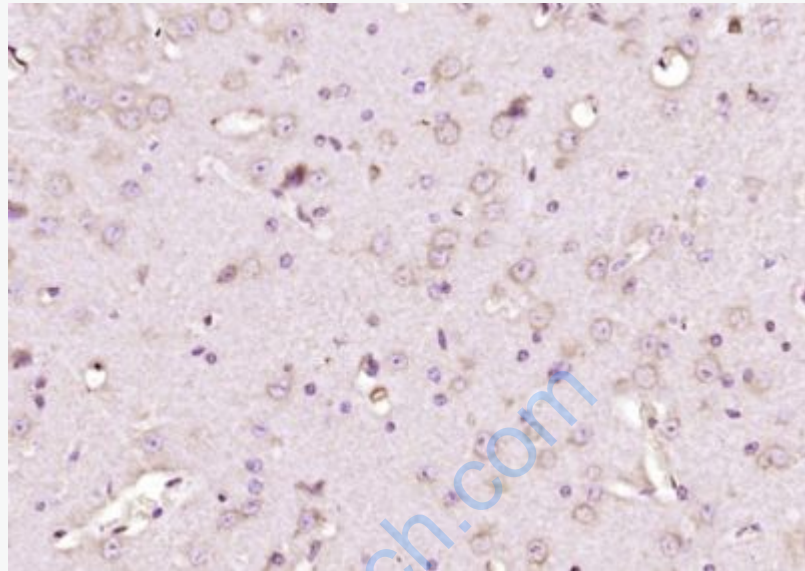
[Unigene: 378901](#)Mouse

[Unigene: 137692](#)Rat

Important Note:

This product as supplied is intended for research use only, not for use in human,

therapeutic or diagnostic applications.



Picture:

Paraformaldehyde-fixed, paraffin embedded (mouse brain); Antigen retrieval by boiling in sodium citrate buffer (pH6.0) for 15min; Block endogenous peroxidase by 3% hydrogen peroxide for 20 minutes; Blocking buffer (normal goat serum) at 37°C for 30min; Antibody incubation with (CK II beta) Polyclonal Antibody, Unconjugated (SL21820R) at 1:200 overnight at 4°C, followed by operating according to SP Kit(Rabbit) (sp-0023) instructions and DAB staining.