



Rabbit Anti-SPRED2 antibody

SL21897R

Product Name:	SPRED2
Chinese Name:	SPRED2蛋白抗体
Alias:	C79158; FLJ21897; FLJ31917; SPRE2_HUMAN; MGC163164; Spred 2; Sprouty protein with EVH 1 domain 2 related sequence; sprouty related EVH1 domain containing 2; Sprouty related protein with EVH 1 domain 2; zgc:77284.
Organism Species:	Rabbit
Clonality:	Polyclonal
React Species:	Human,Mouse,Rat,
Applications:	ELISA=1:500-1000IHC-P=1:400-800IHC-F=1:400-800ICC=1:100-500IF=1:100-500 (Paraffin sections need antigen repair) not yet tested in other applications. optimal dilutions/concentrations should be determined by the end user.
Molecular weight:	47kDa
Cellular localization:	The cell membrane
Form:	Lyophilized or Liquid
Concentration:	1mg/ml
immunogen:	KLH conjugated synthetic peptide derived from human SPRED2 :381-480/674
Lsotype:	IgG
Purification:	affinity purified by Protein A
Storage Buffer:	0.01M TBS(pH7.4) with 1% BSA, 0.03% Proclin300 and 50% Glycerol.
Storage:	Store at -20 °C for one year. Avoid repeated freeze/thaw cycles. The lyophilized antibody is stable at room temperature for at least one month and for greater than a year when kept at -20°C. When reconstituted in sterile pH 7.4 0.01M PBS or diluent of antibody the antibody is stable for at least two weeks at 2-4 °C.
PubMed:	PubMed
Product Detail:	SPRED2 is a member of the Sprouty (see SPRY1; MIM 602465)/SPRED family of proteins that regulate growth factor-induced activation of the MAP kinase cascade (see MAPK1; MIM 176948) (Nonami et al., 2004 [PubMed 15465815]).[supplied by OMIM, Mar 2008]

Function:

Tyrosine kinase substrate that inhibits growth-factor-mediated activation of MAP kinase.

Subunit:

Interacts with Ras (By similarity). Homodimer and heterodimer. Able to interact with SPRED1 to form heterodimers.

Subcellular Location:

Cell Membrane - peripheral membrane protein and Cytoplasmic.

Tissue Specificity:

Expressed in liver, skin, small intestine, salivary gland and prostate.

Post-translational modifications:

Phosphorylated on tyrosine. Phosphorylation of Tyr-228 and Tyr-231 are required for ubiquitination.

Ubiquitinated; leading to degradation by the proteasome.

Similarity:

Contains 1 KBD domain.

Contains 1 SPR (sprouty) domain.

Contains 1 WH1 domain.

SWISS:

Q7Z698

Gene ID:

200734

Database links:

[Entrez Gene: 200734](#) Human

[Entrez Gene: 114716](#) Mouse

[Entrez Gene: 305539](#) Rat

[Omim: 609292](#) Human

[SwissProt: Q7Z698](#) Human

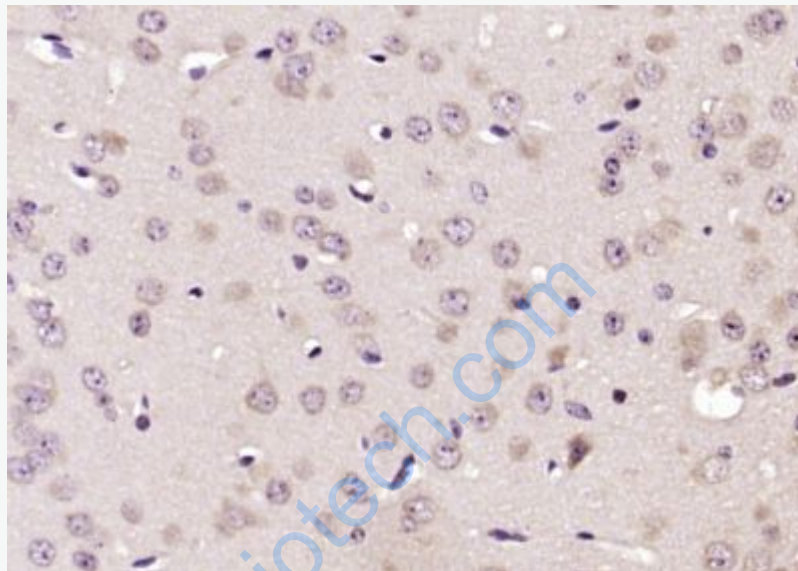
[SwissProt: Q924S7](#) Mouse

[SwissProt: Q3C2P8](#) Rat

[Unigene: 59332](#) Human

Important Note:

This product as supplied is intended for research use only, not for use in human, therapeutic or diagnostic applications.



Picture:

Paraformaldehyde-fixed, paraffin embedded (mouse brain); Antigen retrieval by boiling in sodium citrate buffer (pH6.0) for 15min; Block endogenous peroxidase by 3% hydrogen peroxide for 20 minutes; Blocking buffer (normal goat serum) at 37°C for 30min; Antibody incubation with (SPRED2) Polyclonal Antibody, Unconjugated (SL21897R) at 1:200 overnight at 4°C, followed by operating according to SP Kit(Rabbit) (sp-0023) instructions and DAB staining.