



## Rabbit Anti-S100P antibody

SL22146R

<b>Product Name:</b>	S100P
<b>Chinese Name:</b>	S100钙Binding proteinP抗体
<b>Alias:</b>	MIG9; Migration inducing gene 9; Protein S100-E; Protein S100-P; Protein S100P; S100 calcium binding protein P; S100 calcium-binding protein P; S100 P; S100E; S100P; S100P HUMAN.
<b>Organism Species:</b>	Rabbit
<b>Clonality:</b>	Polyclonal
<b>React Species:</b>	Human,
<b>Applications:</b>	IHC-P=1:400-800 (Paraffin sections need antigen repair) not yet tested in other applications. optimal dilutions/concentrations should be determined by the end user.
<b>Molecular weight:</b>	10kDa
<b>Cellular localization:</b>	The nucleusThe cell membrane
<b>Form:</b>	Lyophilized or Liquid
<b>Concentration:</b>	1mg/ml
<b>immunogen:</b>	KLH conjugated synthetic peptide derived from human S100P:21-70/95
<b>Lsotype:</b>	IgG
<b>Purification:</b>	affinity purified by Protein A
<b>Storage Buffer:</b>	0.01M TBS(pH7.4) with 1% BSA, 0.03% Proclin300 and 50% Glycerol.
<b>Storage:</b>	Store at -20 °C for one year. Avoid repeated freeze/thaw cycles. The lyophilized antibody is stable at room temperature for at least one month and for greater than a year when kept at -20°C. When reconstituted in sterile pH 7.4 0.01M PBS or diluent of antibody the antibody is stable for at least two weeks at 2-4 °C.
<b>PubMed:</b>	<a href="#">PubMed</a>
<b>Product Detail:</b>	The protein encoded by this gene is a member of the S100 family of proteins containing 2 EF-hand calcium-binding motifs. S100 proteins are localized in the cytoplasm and/or nucleus of a wide range of cells, and involved in the regulation of a number of cellular processes such as cell cycle progression and differentiation. S100 genes include at least 13 members which are located as a cluster on chromosome 1q21; however, this gene is located at 4p16. This protein, in addition to binding Ca <sup>2+</sup> , also binds Zn <sup>2+</sup> and Mg <sup>2+</sup> .

This protein may play a role in the etiology of prostate cancer. [provided by RefSeq]

**Function:**

May function as calcium sensor and contribute to cellular calcium signaling. In a calcium-dependent manner, functions by interacting with other proteins, such as EZR and PPP5C, and indirectly plays a role in physiological processes like the formation of microvilli in epithelial cells. May stimulate cell proliferation in an autocrine manner via activation of the receptor for activated glycation end products (RAGE).

**Subunit:**

Homodimer and heterodimer with S100A1. Interacts with S100PBP and S100Z. Interacts with CACYBP in a calcium-dependent manner. Dimeric form binds to and activates EZR/Ezrin by unmasking its F-actin binding sites. Interacts with PPP5C (via TPR repeats); the interaction is calcium-dependent and modulates PPP5C activity.

**Subcellular Location:**

Nucleus. Cytoplasm. Colocalizes with S100PBP in the nucleus.

**Tissue Specificity:**

ected in all of the tissues except brain, testis and small intestine, expression level is higher in placenta, heart, lung, skeletal muscle, spleen and leukocyte. Up-regulated in various pancreatic ductal adenocarcinomas and pancreatic intraepithelial neoplasias.

**Similarity:**

Belongs to the S-100 family.  
Contains 2 EF-hand domains.

**SWISS:**

P25815

**Gene ID:**

6286

**Database links:**

[Entrez Gene: 6286](#)Human

[Omim: 600614](#)Human

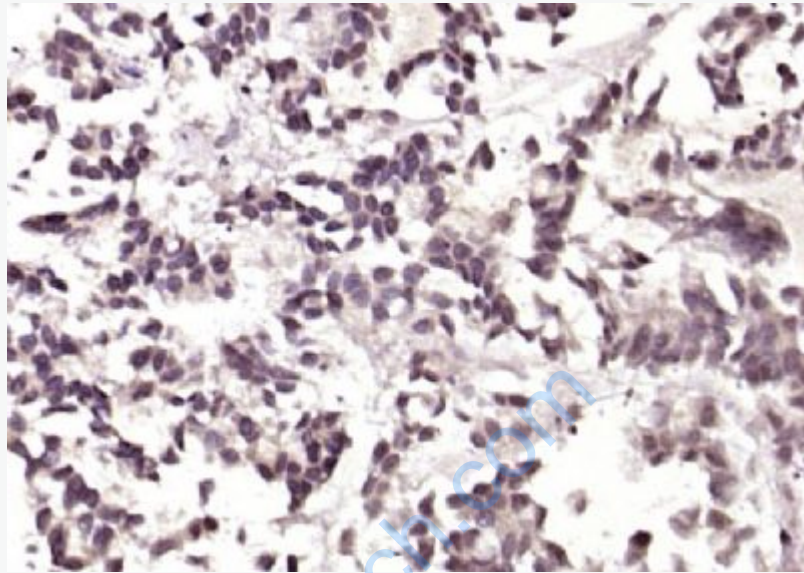
[SwissProt: P25815](#)Human

[Unigene: 2962](#)Human

**Important Note:**

This product as supplied is intended for research use only, not for use in human,

therapeutic or diagnostic applications.



**Picture:**

Paraformaldehyde-fixed, paraffin embedded (human gastric carcinoma); Antigen retrieval by boiling in sodium citrate buffer (pH6.0) for 15min; Block endogenous peroxidase by 3% hydrogen peroxide for 20 minutes; Blocking buffer (normal goat serum) at 37°C for 30min; Antibody incubation with (S100P) Polyclonal Antibody, Unconjugated (SL22146R) at 1:400 overnight at 4°C, followed by operating according to SP Kit(Rabbit) (sp-0023) instructions and DAB staining.