



Rabbit Anti-IL-1RA antibody

SL2216R

Product Name:	IL-1RA
Chinese Name:	白介素-1受体拮抗剂抗体
Alias:	Interleukin-1 receptor antagonist; ICIL 1RA; IL1 inhibitor; ICIL1RA; IL1F3; IL1RN; IRAP; IL1RA_HUMAN.
Organism Species:	Rabbit
Clonality:	Polyclonal
React Species:	Human,Mouse,Rat,Dog,Pig,Cow,Sheep,
Applications:	WB=1:500-2000ELISA=1:500-1000IHC-P=1:400-800IHC-F=1:400-800IF=1:100-500 (Paraffin sections need antigen repair) not yet tested in other applications. optimal dilutions/concentrations should be determined by the end user.
Molecular weight:	17kDa
Cellular localization:	cytoplasmicSecretory protein
Form:	Lyophilized or Liquid
Concentration:	1mg/ml
immunogen:	KLH conjugated synthetic peptide derived from human IL-1RA:26-120/178
Lsotype:	IgG
Purification:	affinity purified by Protein A
Storage Buffer:	0.01M TBS(pH7.4) with 1% BSA, 0.03% Proclin300 and 50% Glycerol.
Storage:	Store at -20 °C for one year. Avoid repeated freeze/thaw cycles. The lyophilized antibody is stable at room temperature for at least one month and for greater than a year when kept at -20°C. When reconstituted in sterile pH 7.4 0.01M PBS or diluent of antibody the antibody is stable for at least two weeks at 2-4 °C.
PubMed:	PubMed
Product Detail:	IL1RA is a member of the Interleukin 1 cytokine family. This protein inhibits the activities of Interleukin 1, alpha (IL1A) and Interleukin 1, beta (IL1B), and modulates a variety of Interleukin 1 related immune and inflammatory responses. This gene and five other closely related cytokine genes form a gene cluster spanning approximately 400 kb on chromosome 2. A polymorphism of this gene is reported to be associated with increased risk of osteoporotic fractures and gastric cancer. Four alternatively spliced

transcript variants encoding distinct isoforms have been reported.

Function:

Inhibits the activity of interleukin-1 by binding to receptor IL1R1 and preventing its association with the coreceptor IL1RAP for signaling. Has no interleukin-1 like activity. Binds functional interleukin-1 receptor IL1R1 with greater affinity than decoy receptor IL1R2; however, the physiological relevance of the latter association is unsure.

Subcellular Location:

Isoform 1: Secreted.
Isoform 2, 3, 4: Cytoplasm.

Tissue Specificity:

The intracellular form of IL1RN is predominantly expressed in epithelial cells.

DISEASE:

Microvascular complications of diabetes 4 (MVCD4) [MIM:612628]: Pathological conditions that develop in numerous tissues and organs as a consequence of diabetes mellitus. They include diabetic retinopathy, diabetic nephropathy leading to end-stage renal disease, and diabetic neuropathy. Diabetic retinopathy remains the major cause of new-onset blindness among diabetic adults. It is characterized by vascular permeability and increased tissue ischemia and angiogenesis. Note=Disease susceptibility is associated with variations affecting the gene represented in this entry.

Interleukin 1 receptor antagonist deficiency (DIRA) [MIM:612852]: A rare autoinflammatory disease of skin and bone resulting in sterile multifocal osteomyelitis, periostitis, and pustulosis from birth. The term autoinflammatory disease describes a group of disorders characterized by attacks of seemingly unprovoked inflammation without significant levels of autoantibodies and autoreactive T-cells. Note=The disease is caused by mutations affecting the gene represented in this entry.

SWISS:

P25085

Gene ID:

3557

Database links:

[Entrez Gene: 3557](#)Human

[Entrez Gene: 16181](#)Mouse

[Entrez Gene: 60582](#)Rat

[Omim: 147679](#)Human

[SwissProt: P18510](#)Human

[SwissProt: P25085](#)Mouse

[SwissProt: P25086](#)Rat

[Unigene: 81134](#)Human

[Unigene: 882](#)Mouse

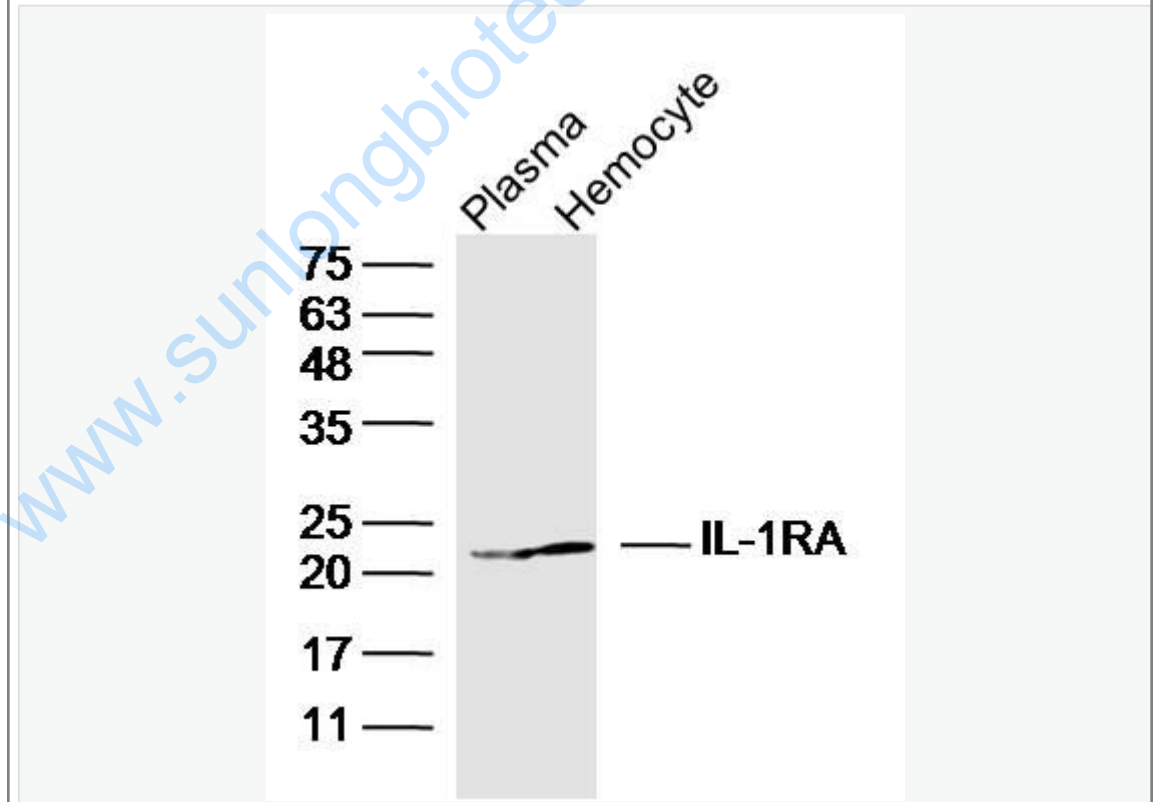
[Unigene: 162640](#)Rat

Important Note:

This product as supplied is intended for research use only, not for use in human, therapeutic or diagnostic applications.

IL-1受体拮抗剂(IL-1ra)是IL-1强有力的内生拮抗剂, 通过与白细胞介素-1的I型和II型受体结合, 特异性地阻断白细胞介素-1的生物学作用。白介素1受体拮抗剂(IL-1Ra)是体内天然的一种对IL-1有拮抗作用的cell factor。

Picture:



Sample: Lane1:Plasma(Mouse) Tissue Lysate at 30 ug

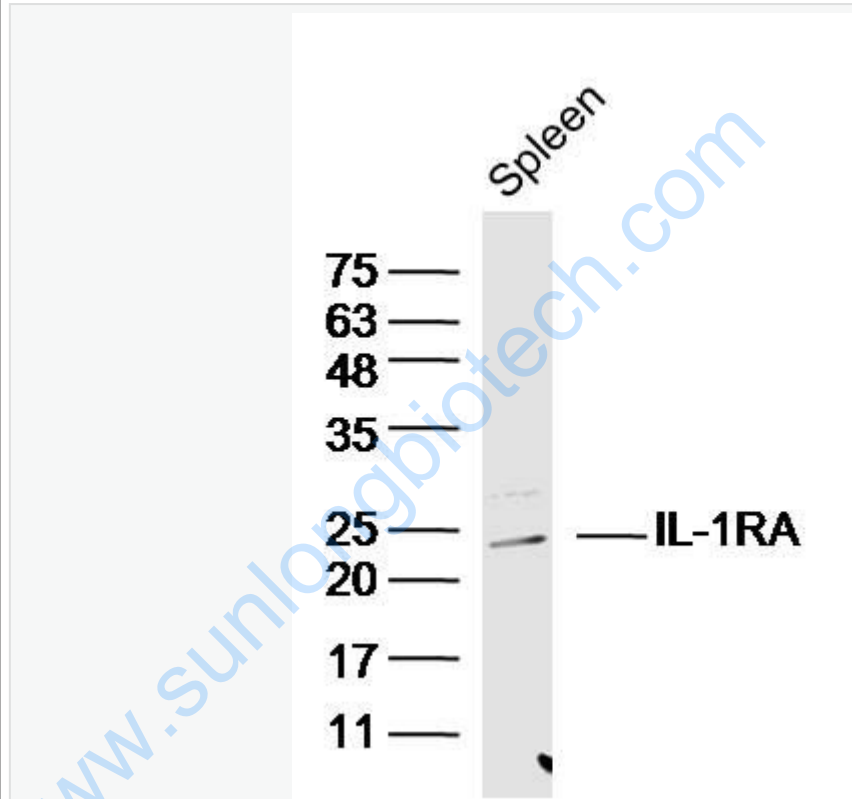
Lane2:Hemocyte(Mouse) Tissue Lysate at 30 ug

Primary: Anti-IL-1RA (SL2216R) at 1/300 dilution

Secondary: IRDye800CW Goat Anti-Rabbit IgG at 1/20000 dilution

Predicted band size: 18 kD

Observed band size: 23 kD



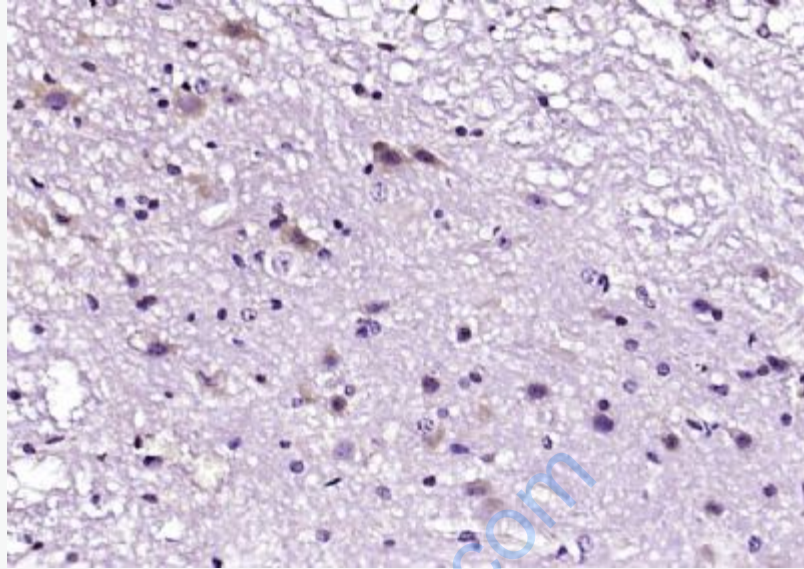
Sample: Spleen(Mouse) Tissue Lysate at 30 ug

Primary: Anti-IL-1RA (SL2216R) at 1/300 dilution

Secondary: IRDye800CW Goat Anti-Rabbit IgG at 1/20000 dilution

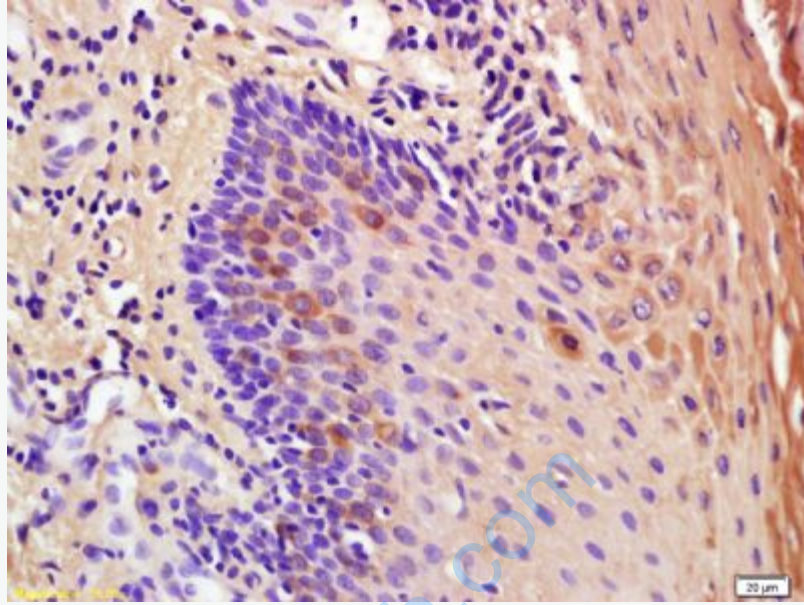
Predicted band size: 18 kD

Observed band size: 23 kD



Paraformaldehyde-fixed, paraffin embedded (mouse spinal tissue); Antigen retrieval by boiling in sodium citrate buffer (pH6.0) for 15min; Block endogenous peroxidase by 3% hydrogen peroxide for 20 minutes; Blocking buffer (normal goat serum) at 37°C for 30min; Antibody incubation with (IL-1RA) Polyclonal Antibody, Unconjugated (SL2216R) at 1:200 overnight at 4°C, followed by operating according to SP Kit(Rabbit) (sp-0023) instructions and DAB staining.

www.sunngbiotech.com



Tissue/cell: Human oral squamous cell carcinoma; 4% Paraformaldehyde-fixed and paraffin-embedded;

Antigen retrieval: citrate buffer (0.01M, pH 6.0), Boiling bathing for 15min; Block endogenous peroxidase by 3% Hydrogen peroxide for 30min; Blocking buffer (normal goat serum,C-0005) at 37°C for 20 min;

Incubation: Anti-IL-1RA Polyclonal Antibody, Unconjugated(SL2216R) 1:200, overnight at 4°C, followed by conjugation to the secondary antibody(SP-0023) and DAB(C-0010) staining