



Rabbit Anti-Integrin alpha E antibody

SL2217R

Product Name:	Integrin alpha E
Chinese Name:	整合素alpha E2 抗体
Alias:	Itgae; A530055J10; alpha-E1; alpha-M290; aM290; CD103; MGC183601; antigen CD103, human mucosal lymphocyte antigen 1; alpha polypeptide. ITAE_HUMAN; Integrin alpha-E; HML-1 antigen; Integrin alpha-IEL; Mucosal lymphocyte 1 antigen; Integrin alpha-E heavy chain; integrin alpha-E precursor.
Organism Species:	Rabbit
Clonality:	Polyclonal
React Species:	Human,Mouse,Rat,Dog,Rabbit,
Applications:	WB=1:500-2000ELISA=1:500-1000IHC-F=1:400-800Flow-Cyt=1ug/testIF=1:100-500 (Paraffin sections need antigen repair) not yet tested in other applications. optimal dilutions/concentrations should be determined by the end user.
Molecular weight:	110/128kDa
Cellular localization:	The cell membrane
Form:	Lyophilized or Liquid
Concentration:	1mg/ml
immunogen:	KLH conjugated synthetic peptide derived from human Integrin alpha-E heavy chain:1101-1179/1179<Cytoplasmic>
Lsotype:	IgG
Purification:	affinity purified by Protein A
Storage Buffer:	0.01M TBS(pH7.4) with 1% BSA, 0.03% Proclin300 and 50% Glycerol.
Storage:	Store at -20 °C for one year. Avoid repeated freeze/thaw cycles. The lyophilized antibody is stable at room temperature for at least one month and for greater than a year when kept at -20°C. When reconstituted in sterile pH 7.4 0.01M PBS or diluent of antibody the antibody is stable for at least two weeks at 2-4 °C.
PubMed:	PubMed
Product Detail:	CD103/Integrin alpha E is a new member of the integrin series of adhesion molecules containing the beta7 subunit. This antigen defines a developmentally important subset of T cells, namely mucosal T cells including all IEL (intraepithelial lymphocytes) and

~20% of lamina propria T cells. Expression of CD103 is more restricted outside these mucosal organs, appearing at lower levels on T cell subsets of the lymph node, dendritic epidermis and periphery. In non-epithelial CD103+ T cells there is a bias toward expression on CD8+ cells. Integrin alpha E is a heterodimer comprising a 150kDa alpha chain and a 120kDa beta chain. Integrin alpha E is expressed by approximately 1% of peripheral blood lymphocytes, activated T lymphocytes and by hairy cell leukaemia cells. The antigen is also expressed by intraepithelial lymphocytes.

Function:

Integrin alpha-E/beta-7 is a receptor for E-cadherin. It mediates adhesion of intra-epithelial T-lymphocytes to epithelial cell monolayers.

Subunit:

Heterodimer of an alpha and a beta subunit. The alpha subunit is composed of an heavy and a light chains linked by a disulfide bond. Alpha-E associates with beta-7.

Subcellular Location:

Membrane; Single-pass type I membrane protein. Expressed on a subclass of T-lymphocytes known as intra-epithelial lymphocytes which are located between mucosal epithelial cells.

Tissue Specificity:

Expressed on a subclass of T-lymphocytes known as intra-epithelial lymphocytes which are located between mucosal epithelial cells.

Similarity:

Belongs to the integrin alpha chain family.

Contains 7 FG-GAP repeats.

Contains 1 VWFA domain.

SWISS:

P38570

Gene ID:

3682

Database links:

[Entrez Gene: 3682](#)Human

[Omim: 604682](#)Human

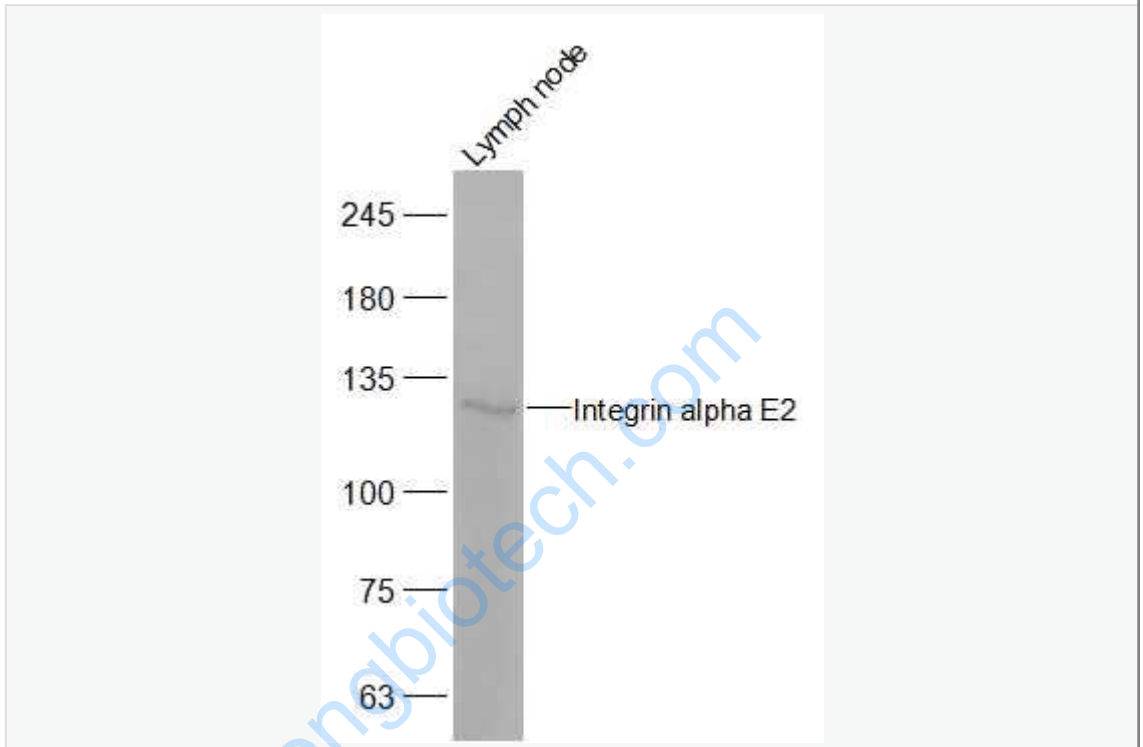
[SwissProt: P38570](#)Human

[Unigene: 513867](#)Human

Important Note:

This product as supplied is intended for research use only, not for use in human, therapeutic or diagnostic applications.

Picture:



Sample:

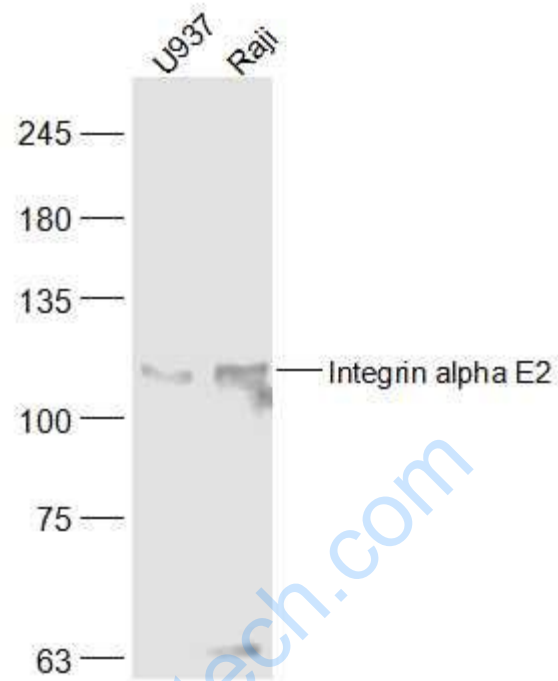
Lymph node (Mouse) Lysate at 40 ug

Primary: Anti-Integrin alpha E2 (SL2217R) at 1/300 dilution

Secondary: IRDye800CW Goat Anti-Rabbit IgG at 1/20000 dilution

Predicted band size: 110/128 kD

Observed band size: 128 kD



Sample:

U937(Human) Cell Lysate at 30 ug

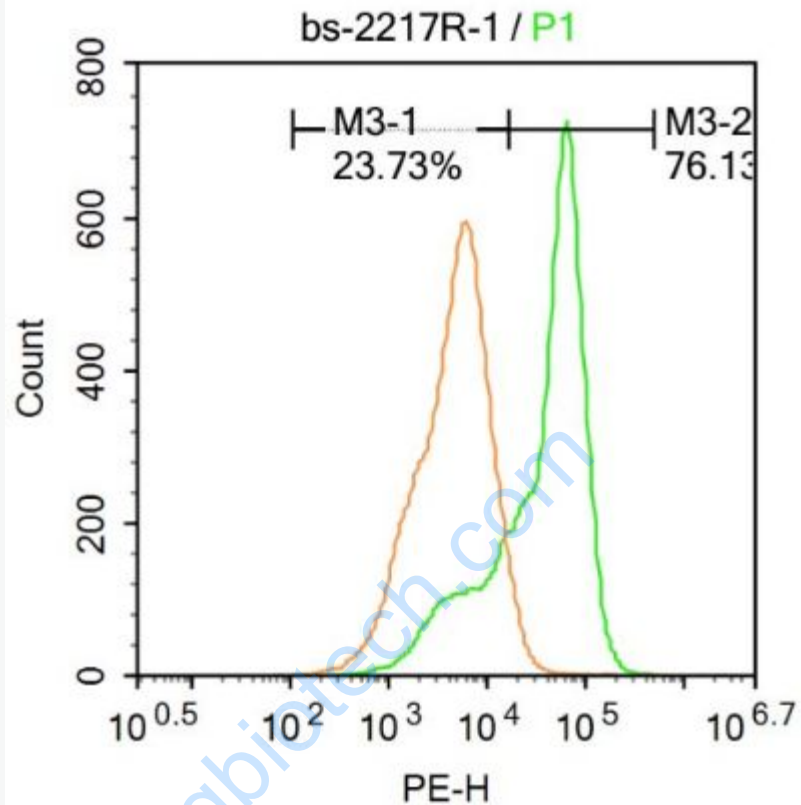
Raji(Human) Cell Lysate at 30 ug

Primary: Anti-Integrin alpha E2 (SL2217R) at 1/300 dilution

Secondary: IRDye800CW Goat Anti-Rabbit IgG at 1/20000 dilution

Predicted band size: 110/128 kD

Observed band size: 110 kD



Molt-4 cells were fixed with 4% PFA for 10min at room temperature, permeabilized with 20% PBST for 20 min at room temperature, and incubated in 5% BSA blocking buffer for 30 min at room temperature. Cells were then stained with CD103 Antibody (SL2217R) at 1:500 dilution in blocking buffer and incubated for 30 min at room temperature, washed twice with 2% BSA in PBS, followed by secondary antibody incubation for 40 min at room temperature. Acquisitions of 20,000 events were performed. Cells stained with primary antibody (green), and isotype control (orange).