



## Rabbit Anti-Artemin antibody

SL22202R

<b>Product Name:</b>	Artemin
<b>Chinese Name:</b>	Artemin抗体
<b>Alias:</b>	Artemin; ARTN; Enovin; EVN; NBN; Neublartin
<b>Organism Species:</b>	Rabbit
<b>Clonality:</b>	Polyclonal
<b>React Species:</b>	Human,Mouse,Rat,Chicken,Pig,Rabbit,
<b>Applications:</b>	WB=1:500-2000ELISA=1:500-1000IHC-P=1:400-800IHC-F=1:400-800ICC=1:100-500IF=1:100-500 (Paraffin sections need antigen repair) not yet tested in other applications. optimal dilutions/concentrations should be determined by the end user.
<b>Molecular weight:</b>	12/19kDa
<b>Cellular localization:</b>	Secretory protein
<b>Form:</b>	Lyophilized or Liquid
<b>Concentration:</b>	1mg/ml
<b>immunogen:</b>	KLH conjugated synthetic peptide derived from human Artemin:141-220/220
<b>Lsotype:</b>	IgG
<b>Purification:</b>	affinity purified by Protein A
<b>Storage Buffer:</b>	0.01M TBS(pH7.4) with 1% BSA, 0.03% Proclin300 and 50% Glycerol.
<b>Storage:</b>	Store at -20 °C for one year. Avoid repeated freeze/thaw cycles. The lyophilized antibody is stable at room temperature for at least one month and for greater than a year when kept at -20°C. When reconstituted in sterile pH 7.4 0.01M PBS or diluent of antibody the antibody is stable for at least two weeks at 2-4 °C.
<b>PubMed:</b>	<a href="#">PubMed</a>
<b>Product Detail:</b>	Artemin is a novel member of the GDNF ligand family, supports peripheral and central neurons and signals through the GFR alpha3-RET receptor complex. The protein encoded by this gene is a member of the glial cell line-derived neurotrophic factor (GDNF) family of ligands which are a group of ligands within the TGF-beta superfamily of signaling molecules. GDNFs are unique in having neurotrophic properties and have potential use for gene therapy in neurodegenerative disease. Artemin has been shown in culture to support the survival of a number of periferal neuron populations and at least

one population of dopaminergic CNS neurons. Its role in the PNS and CNS is further substantiated by its expression pattern in the proximity of these neurons. This protein is a ligand for the RET receptor and uses GFR-alpha 3 as a coreceptor. Four alternatively spliced transcripts have been described, two of which encode the same protein.

**Function:**

Ligand for the GFR-alpha-3-RET receptor complex but can also activate the GFR-alpha-1-RET receptor complex. Supports the survival of sensory and sympathetic peripheral neurons in culture and also supports the survival of dopaminergic neurons of the ventral mid-brain. Strong attractant of gut hematopoietic cells thus promoting the formation Peyer's patch-like structures, a major component of the gut-associated lymphoid tissue (By similarity). Subunit : Homodimer; disulfide-linked. Binds to RET.

**Subcellular Location:**

Secreted.

**Tissue Specificity:**

Cochlea. Expressed at higher level in sensorineural epithelium than in the modiolus region or substantia nigra.

**Similarity:**

Belongs to the TGF-beta family. GDNF subfamily.

**SWISS:**

Q9Z0L2

**Gene ID:**

9048

**Database links:**

[Entrez Gene: 9048](#)Human

[Entrez Gene: 11876](#)Mouse

[Entrez Gene: 362572](#)Rat

[Omim: 603886](#)Human

[SwissProt: Q5T4W7](#)Human

[SwissProt: Q9Z0L2](#)Mouse

[SwissProt: Q6AYE8](#)Rat

[Unigene: 632404](#)Human

[Unigene: 56897](#)Mouse

[Unigene: 154711](#)Rat

**Important Note:**

This product as supplied is intended for research use only, not for use in human, therapeutic or diagnostic applications.

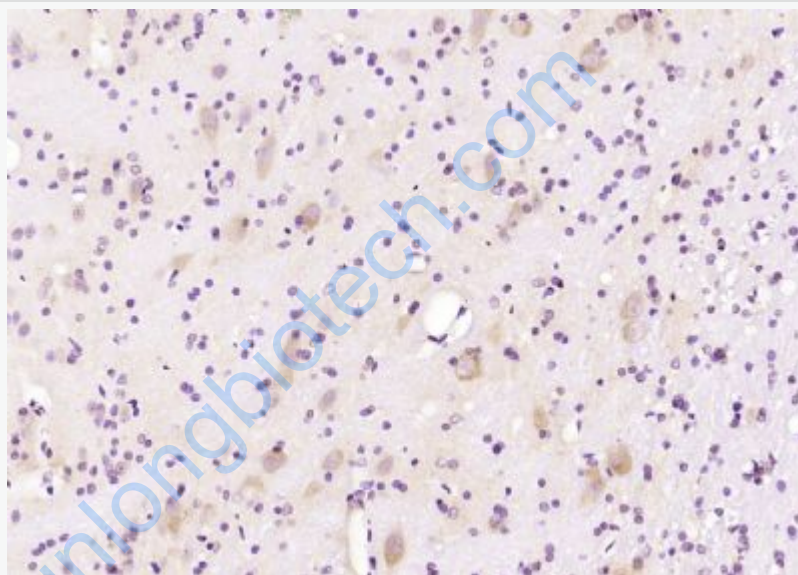
Neurobiology相关蛋白 (Neurobiology) Artemin 是GDNF

家族的一个新成员, 已被证实它是从前的孤儿受体GFRalpha3-RET的配体。

Artemin是感觉和交感神经元培养的一个存活因子, 它的表达形式也影响体内的这

些神经元。Artemin 还能激活GFRalpha1-RET

复合物并支持培养中脑多巴胺神经元存活



**Picture:**

Paraformaldehyde-fixed, paraffin embedded (rat brain); Antigen retrieval by boiling in sodium citrate buffer (pH6.0) for 15min; Block endogenous peroxidase by 3% hydrogen peroxide for 20 minutes; Blocking buffer (normal goat serum) at 37°C for 30min; Antibody incubation with (Artemin) Polyclonal Antibody, Unconjugated (SL22202R) at 1:200 overnight at 4°C, followed by operating according to SP Kit(Rabbit) (sp-0023) instructions and DAB staining.