

Rabbit Anti-LYRIC antibody

SL2231R

Product Name:	LYRIC
Chinese Name:	星形胶质细胞升高基因1抗体
Alias:	Astrocyte elevated gene 1; AEG 1; AEG1; MTDH; AEG1; AEG-1; LYRIC; Protein LYRIC; Lysine-rich CEACAM1 co-isolated protein; 3D3/LYRIC; Metastasis adhesion protein; Metadherin; Astrocyte elevated gene-1 protein; 3D3; Lysine rich CEACAM1 associated protein
文献引用 PubMed	<p>Specific References(4) SL2231R has been referenced in 4 publications.</p> <p>[IF=1.37]Guo, Feng, et al. "Astrocyte elevated gene-1 overexpression in histologically favorable Wilms tumor is related to poor prognosis." Journal of Pediatric Urology (2013).Human. PubMed:24119914</p> <p>[IF=2.52]Zheng, Jiasheng, et al. "Astrocyte elevated gene-1 (AEG-1) shRNA sensitizes Huaier polysaccharide (HP)-induced anti-metastatic potency via inactivating downstream P13K/Akt pathway as well as augmenting cell-mediated immune response." Tumor Biology (2013): 1-6.WB;Human. PubMed:24375254</p> <p>[IF=0.00]Guo, Jia, et al. "AEG-1 expression correlates with CD133 and PPP6c levels in human glioma tissues." The Journal of Biomedical Research (2014).IHC-P;Human. PubMed:25332711</p> <p>[IF=2.11]Zhang, Chun, et al. "MTDH/AEG-1-based DNA vaccine suppresses metastasis and enhances chemosensitivity to paclitaxel in pelvic lymph node metastasis."Biomedicine & Pharmacotherapy (2015).IHC-P;Mouse. PubMed:25776504</p>

Organism Species:	Rabbit
Clonality:	Polyclonal
React Species:	Human, Mouse, Rat, Dog, Pig, Cow,
Applications:	WB=1:500-2000 ELISA=1:500-1000 IHC-P=1:400-800 IHC-F=1:400-800 Flow-Cyt=1ug/Test IF=1:100-500 (Paraffin sections need antigen repair) not yet tested in other applications. optimal dilutions/concentrations should be determined by the end user.
Molecular weight:	64kDa
Cellular localization:	The nucleus cytoplasmic The cell membrane
Form:	Lyophilized or Liquid
Concentration:	1mg/ml
immunogen:	KLH conjugated synthetic peptide derived from human AEG-1:131-230/582
Lsotype:	IgG
Purification:	affinity purified by Protein A
Storage Buffer:	0.01M TBS(pH7.4) with 1% BSA, 0.03% Proclin300 and 50% Glycerol.
Storage:	Store at -20 °C for one year. Avoid repeated freeze/thaw cycles. The lyophilized antibody is stable at room temperature for at least one month and for greater than a year when kept at -20°C. When reconstituted in sterile pH 7.4 0.01M PBS or diluent of antibody the antibody is stable for at least two weeks at 2-4 °C.
PubMed:	PubMed
Product Detail:	<p>LYRIC is a type II membrane protein, the precise role of which has yet to be defined. It is expressed in breast and prostate carcinoma and is a potential mediator of lung metastasis. It has also been found in mouse Purkinje neurons and cerebellum. In epithelial cells it is recruited to tight junctions (TJ) during the maturation of the TJ complexes. LYRIC co-localizes with beta-catenin in normal and tumour tissues.</p> <p>Function: Downregulates SLC1A2/EAAT2 promoter activity when expressed ectopically. Activates the nuclear factor kappa-B (NF-kappa-B) transcription factor. Promotes anchorage-independent growth of immortalized melanocytes and astrocytes which is a key component in tumor cell expansion. Promotes lung metastasis and also has an effect on bone and brain metastasis, possibly by enhancing the seeding of tumor cells to the target organ endothelium. Induces chemoresistance.</p> <p>Subunit: Interacts with BCIPP, CREBBP/CBP and RELA/p65.</p> <p>Subcellular Location: Endoplasmic reticulum membrane; Single-pass membrane protein. Nucleus membrane; Single-pass membrane protein. Cell junction, tight junction. Nucleus, nucleolus . Cytoplasm, perinuclear region. Note=In epithelial cells, recruited to tight junctions (TJ) during the maturation of the TJ complexes. A nucleolar staining may be due to nuclear targeting of an isoform lacking the transmembrane domain. TNF-alpha causes translocation from the cytoplasm to the nucleus.</p>

Tissue Specificity:

Widely expressed with highest levels in muscle-dominating organs such as skeletal muscle, heart, tongue and small intestine and in endocrine glands such as thyroid and adrenal gland. Overexpressed in various cancers including breast, brain, prostate, melanoma and glioblastoma multiforme.

SWISS:

Q86UE4

Gene ID:

92140

Database links:

[Entrez Gene: 509788](#)Cow

[Entrez Gene: 92140](#)Human

[Entrez Gene: 67154](#)Mouse

[Entrez Gene: 170910](#)Rat

[Omin: 610323](#)Human

[SwissProt: Q86UE4](#)Human

[SwissProt: Q80WJ7](#)Mouse

[SwissProt: Q9Z1W6](#)Rat

[Unigene: 377155](#)Human

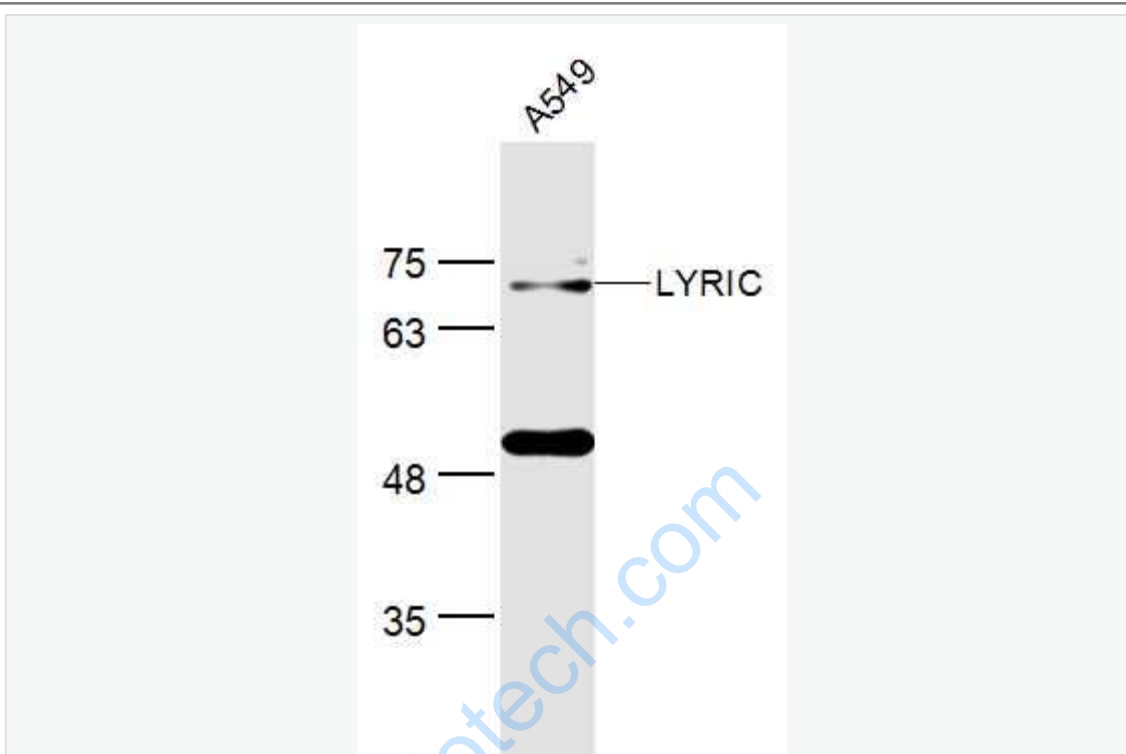
[Unigene: 130883](#)Mouse

[Unigene: 6864](#)Rat

Important Note:

This product as supplied is intended for research use only, not for use in human, therapeutic or diagnostic applications.

Picture:



Sample:

A549(Human) Lysate at 40 ug

Primary: Anti-LYRIC (SL2231R) at 1/300 dilution

Secondary: IRDye800CW Goat Anti-Rabbit IgG at 1/20000 dilution

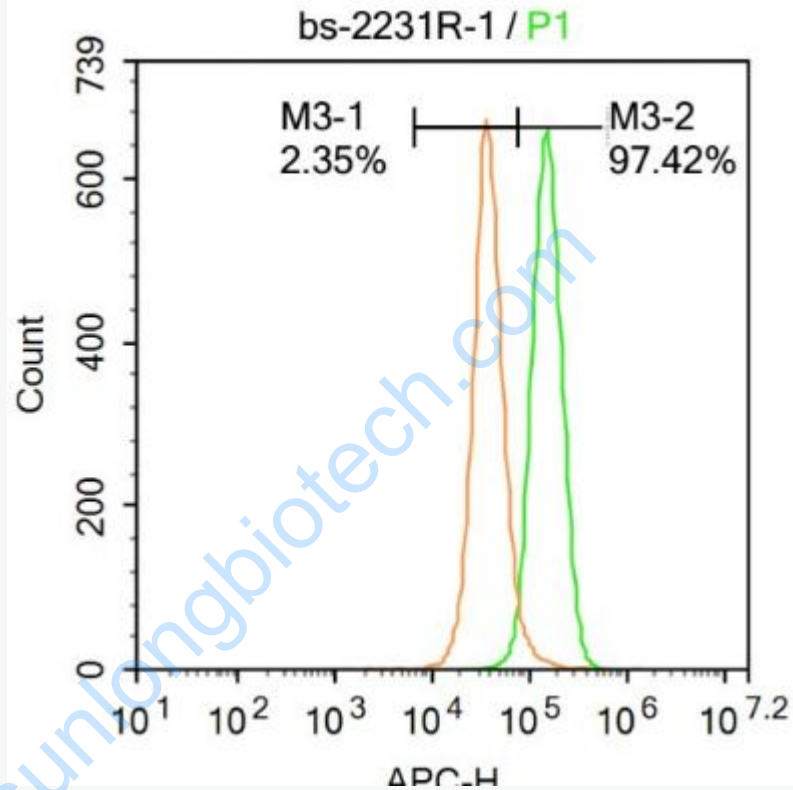
Predicted band size: 64 kD

Observed band size: 64 kD



Paraformaldehyde-fixed, paraffin embedded (human brain glioma); Antigen retrieval by boiling in sodium citrate buffer (pH6.0) for 15min; Block endogenous peroxidase by 3% hydrogen peroxide for 20 minutes; Blocking buffer (normal goat serum) at 37°C for 30min; Antibody incubation with (LYRIC) Polyclonal Antibody,

Unconjugated (SL2231R) at 1:400 overnight at 4°C, followed by operating according to SP Kit(Rabbit) (sp-0023) instructions and DAB staining.



Blank control:A431.

Primary Antibody (green line): Rabbit Anti-LYRIC antibody (SL2231R)

Dilution: 1µg /10⁶ cells;

Isotype Control Antibody (orange line): Rabbit IgG .

Secondary Antibody : Goat anti-rabbit IgG-AF647

Dilution: 1µg /test.

Protocol

The cells were fixed with 4% PFA (10min at room temperature) and then permeabilized with 90% ice-cold methanol for 20 min at -20°C. The cells were then

incubated in 5%BSA to block non-specific protein-protein interactions for 30 min at at room temperature .Cells stained with Primary Antibody for 30 min at room temperature. The secondary antibody used for 40 min at room temperature. Acquisition of 20,000 events was performed.