



Rabbit Anti-CEAcam8 antibody

SL22343R

Product Name:	CEAcam8
Chinese Name:	癌胚抗原相关Cell adhesion molecule8抗体
Alias:	Carcinoembryonic Antigen CGM6; Carcinoembryonic antigen gene family member 6; Carcinoembryonic Antigen Related Cell Adhesion Molecule 8; CD 66b; CD 67; CD66b antigen; CD67; CD67 antigen; CEACAM 8; CEACAM8; CGM 6; CGM6; NCA 95; NCA95; Nonspecific cross reacting antigen NCA 95; Non-specific -reacting antigen NCA-95; Nonspecific cross reacting antigen NCA95; CEAM8_HUMAN; Carcinoembryonic antigen-related cell adhesion molecule 8; CD66b.
Organism Species:	Rabbit
Clonality:	Polyclonal
React Species:	Human,
Applications:	IHC-P=1:400-800 (Paraffin sections need antigen repair) not yet tested in other applications. optimal dilutions/concentrations should be determined by the end user.
Molecular weight:	38kDa
Cellular localization:	The cell membrane
Form:	Lyophilized or Liquid
Concentration:	1mg/ml
immunogen:	KLH conjugated synthetic peptide derived from human IRS1 :271-349/349
Lsotype:	IgG
Purification:	affinity purified by Protein A
Storage Buffer:	0.01M TBS(pH7.4) with 1% BSA, 0.03% Proclin300 and 50% Glycerol.
Storage:	Store at -20 °C for one year. Avoid repeated freeze/thaw cycles. The lyophilized antibody is stable at room temperature for at least one month and for greater than a year when kept at -20°C. When reconstituted in sterile pH 7.4 0.01M PBS or diluent of antibody the antibody is stable for at least two weeks at 2-4 °C.
PubMed:	PubMed
Product Detail:	Carcinoembryonic antigen-related cell adhesion molecule 8 (CEACAM8) is a highly glycosylated protein expressed only in neutrophils and eosinophils in humans. The precise function of CEACAM8 remains unclear. As a member of the family of

carcinoembryonic antigen (CEA), it may play a role in the interaction between granulocytes or between granulocytes and epithelial cells. Expressed in leukocytes of chronic myeloid Leukemia patients and bone marrow.

Subcellular Location:

Cell membrane; Lipid-anchor, GPI-anchor.

Tissue Specificity:

Expressed in leukocytes of chronic myeloid Leukemia patients and bone marrow.

Similarity:

Belongs to the immunoglobulin superfamily. CEA family.

Contains 2 Ig-like C2-type (immunoglobulin-like) domains.

Contains 1 Ig-like V-type (immunoglobulin-like) domain.

SWISS:

P31997

Gene ID:

1088

Database links:

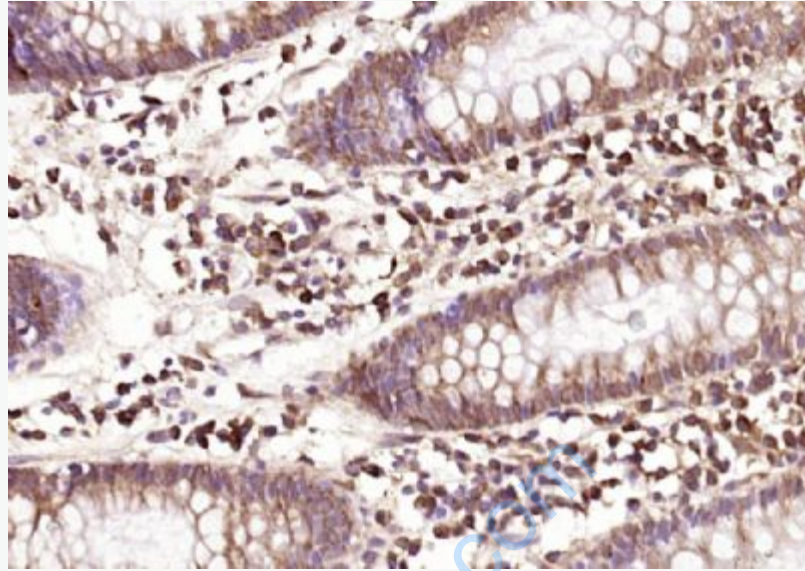
[Entrez Gene: 1088](#)Human

[SwissProt: P31997](#)Human

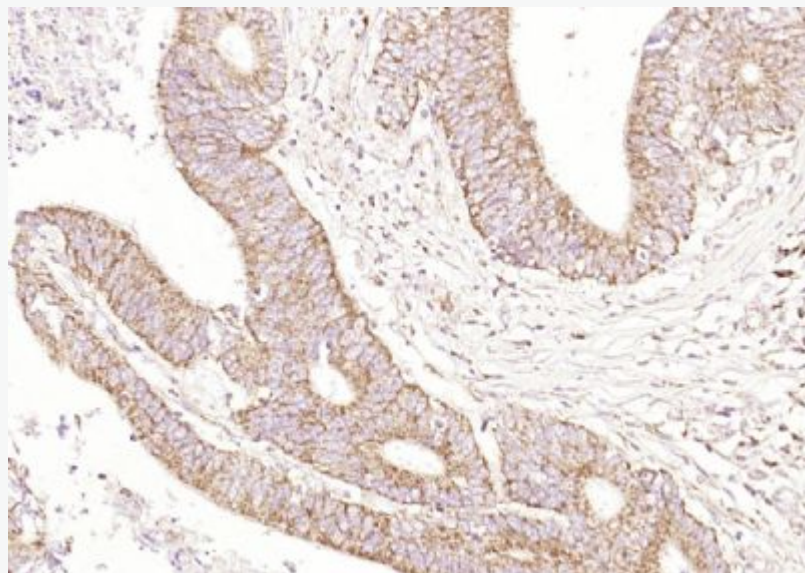
[Unigene: 41](#)Human

Important Note:

This product as supplied is intended for research use only, not for use in human, therapeutic or diagnostic applications.



Paraformaldehyde-fixed, paraffin embedded (human rectal carcinoma); Antigen retrieval by boiling in sodium citrate buffer (pH6.0) for 15min; Block endogenous peroxidase by 3% hydrogen peroxide for 20 minutes; Blocking buffer (normal goat serum) at 37°C for 30min; Antibody incubation with (CEAcam8) Polyclonal Antibody, Unconjugated (SL22343R) at 1:400 overnight at 4°C, followed by operating according to SP Kit(Rabbit) (sp-0023) instructions and DAB staining.



Picture:

Paraformaldehyde-fixed, paraffin embedded (human colon carcinoma); Antigen retrieval by boiling in sodium citrate buffer (pH6.0) for 15min; Block endogenous peroxidase by 3% hydrogen peroxide for 20 minutes; Blocking buffer (normal goat serum) at 37°C for 30min; Antibody incubation with (CEAcam8) Polyclonal Antibody, Unconjugated (SL22343R) at 1:400 overnight at 4°C, followed by operating according to SP Kit(Rabbit) (sp-0023) instructions and DAB staining.

www.sunlongbiotech.com