



## Rabbit Anti-CD51 antibody

SL2250R

<b>Product Name:</b>	CD51
<b>Chinese Name:</b>	整合素 $\alpha$ V抗体
<b>Alias:</b>	Integrin alpha V; CD 51; CD51; CD51 antigen; HGNC; ITGAV; Msk 8; Msk8; Vitronectin receptor alpha polypeptide; Vitronectin receptor alpha polypeptide antigen CD51; Vitronectin receptor subunit alpha; VNRA; ITAV_HUMAN; Integrin alpha-V heavy chain; Integrin alpha-V light chain; Integrin alpha-V Precursor.
<b>文献引用</b> PubMed :	<p><b>Specific References(2)</b> SL2250R has been referenced in 2 publications.</p> <p><b>[IF=0.00]</b>Ulmasov, Barbara, et al. "Inhibitors of RGD-Binding Integrins Reduce Development of Pancreatic Fibrosis in Mice." CMGH Cellular and Molecular Gastroenterology and Hepatology (2016).<b>IHC-P;Mouse.</b>  <a href="#">PubMed:not posted yet</a></p> <p><b>[IF=6.52]</b>Agarwal, Shailesh, et al. "Analysis of bone-cartilage-stromal progenitor populations in trauma induced and genetic models of heterotopic ossification." STEM CELLS (2016).<b>IHC-P;Mouse.</b>  <a href="#">PubMed:27068890</a></p>
<b>Organism Species:</b>	Rabbit
<b>Clonality:</b>	Polyclonal
<b>React Species:</b>	Human,Mouse,Rat,Chicken,Dog,Pig,Cow,Horse,
<b>Applications:</b>	WB=1:1000-10000ELISA=1:500-1000IHC-P=1:400-800IHC-F=1:400-800Flow-Cyt=1 $\mu$ g/TestIF=1:100-500 (Paraffin sections need antigen repair) not yet tested in other applications. optimal dilutions/concentrations should be determined by the end user.
<b>Molecular weight:</b>	95/113kDa
<b>Cellular localization:</b>	The cell membrane
<b>Form:</b>	Lyophilized or Liquid
<b>Concentration:</b>	1mg/ml

<b>immunogen:</b>	KLH conjugated synthetic peptide derived from human Integrin alpha V:51-150/1048<Extracellular>
<b>Lsotype:</b>	IgG
<b>Purification:</b>	affinity purified by Protein A
<b>Storage Buffer:</b>	0.01M TBS(pH7.4) with 1% BSA, 0.03% Proclin300 and 50% Glycerol.
<b>Storage:</b>	Store at -20 °C for one year. Avoid repeated freeze/thaw cycles. The lyophilized antibody is stable at room temperature for at least one month and for greater than a year when kept at -20°C. When reconstituted in sterile pH 7.4 0.01M PBS or diluent of antibody the antibody is stable for at least two weeks at 2-4 °C.
<b>PubMed:</b>	<a href="#">PubMed</a>
<b>Product Detail:</b>	<p>Integrin alpha V chain interacts with the integrin beta 3 subunit/CD61 to form the alpha-V-beta-3 heterodimer/vitronectin receptor. It is expressed on endothelial cells, some activated leukocytes, NK cells, macrophages, neutrophils, and platelets. Integrin alpha V also forms heterodimers with the integrin beta 1, beta 5, beta 6, and beta 8 subunits. Alpha-V-beta-3 is an activation dependent receptor for platelet attachment and spreading on vitronectin and other matrix components. In case of HIV-1 infection, the interaction with extracellular viral Tat protein seems to enhance angiogenesis in Kaposi's sarcoma lesions. Alpha-V/beta-6 binds to foot-and-mouth disease virus (FMDV) VP1 protein and acts as a receptor for this virus By similarity. Alpha-V/beta-6 binds to coxsackievirus A9 and coxsackievirus B1 capsid proteins and acts as a receptor for these viruses.</p> <p><b>Function:</b> The alpha-V integrins are receptors for vitronectin, cytotactin, fibronectin, fibrinogen, laminin, matrix metalloproteinase-2, osteopontin, osteomodulin, prothrombin, thrombospondin and vWF. They recognize the sequence R-G-D in a wide array of ligands. In case of HIV-1 infection, the interaction with extracellular viral Tat protein seems to enhance angiogenesis in Kaposi's sarcoma lesions.</p> <p><b>Subunit:</b> Heterodimer of an alpha and a beta subunit. The alpha subunit is composed of an heavy and a light chain linked by a disulfide bond. Alpha-V associates with either beta-1, beta-3, beta-5, beta-6 or beta-8 subunit. Interacts with HIV-1 Tat. Alpha-V/beta-6 binds to foot-and-mouth disease virus (FMDV) VP1 protein and acts as a receptor for this viru. Alpha-V/beta-6 binds to coxsackievirus A9 and coxsackievirus B1 capsid proteins and acts as a receptor for these viruses. Interacts with RAB25.</p> <p><b>Subcellular Location:</b> Membrane; Single-pass type I membrane protein.</p> <p><b>Similarity:</b> Belongs to the integrin alpha chain family. Contains 7 FG-GAP repeats.</p> <p><b>SWISS:</b> P06756</p>

**Gene ID:**  
3685

**Database links:**

[Entrez Gene: 3685](#)Human

[Entrez Gene: 16410](#)Mouse

[Entrez Gene: 296456](#)Rat

[Omim: 193210](#)Human

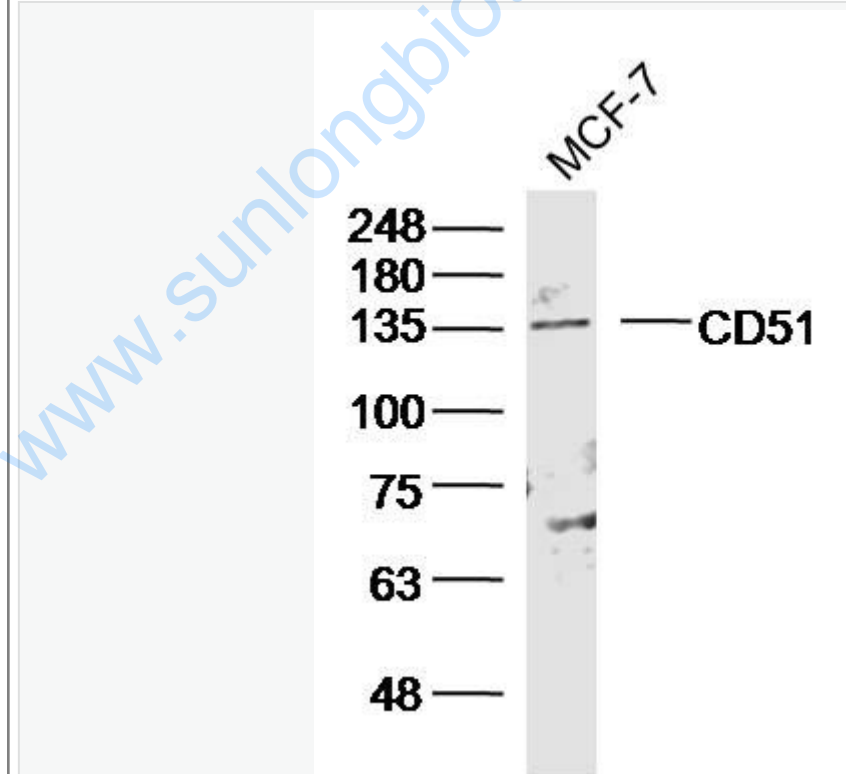
[SwissProt: P06756](#)Human

[SwissProt: P43406](#)Mouse

**Important Note:**

This product as supplied is intended for research use only, not for use in human, therapeutic or diagnostic applications.

Picture:



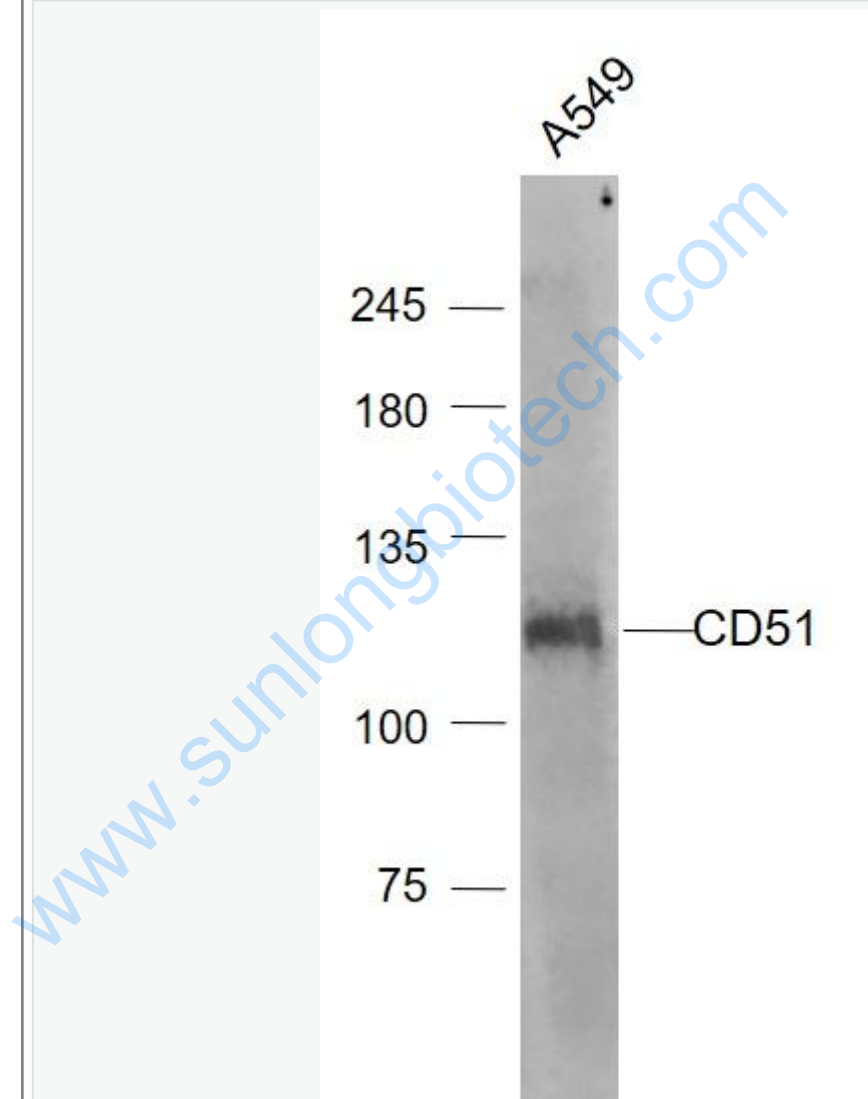
Sample: MCF-7 Cell (Human) Lysate at 40 ug

Primary: Anti- CD51 (SL2250R) at 1/300 dilution

Secondary: IRDye800CW Goat Anti-Rabbit IgG at 1/20000 dilution

Predicted band size: 95/113 kD

Observed band size: 135 kD



Sample:

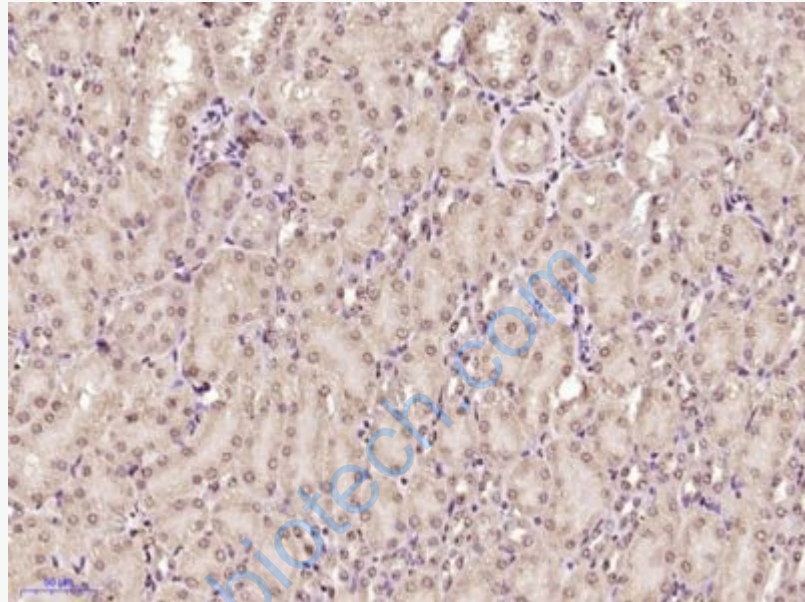
A549(Human) Cell Lysate at 30 ug

Primary: Anti- CD51 (SL2250R) at 1/1000 dilution

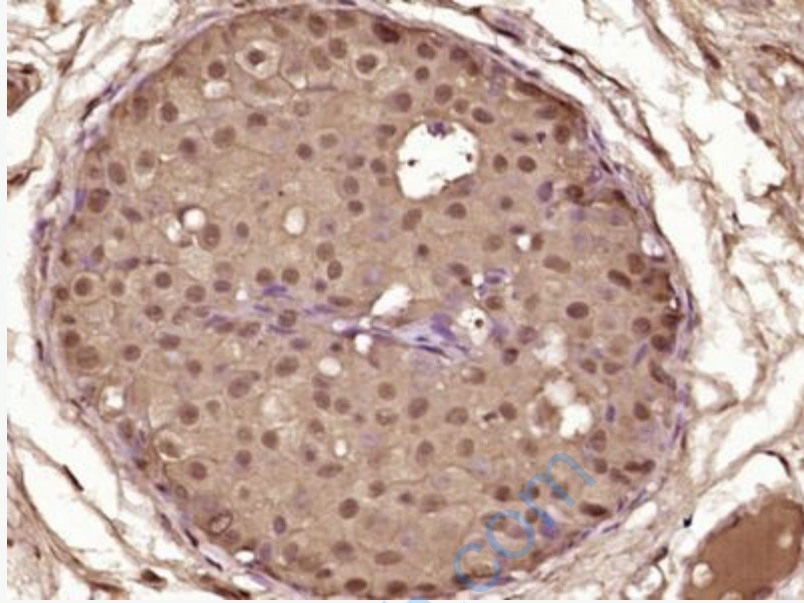
Secondary: IRDye800CW Goat Anti-Rabbit IgG at 1/20000 dilution

Predicted band size: 95/113 kD

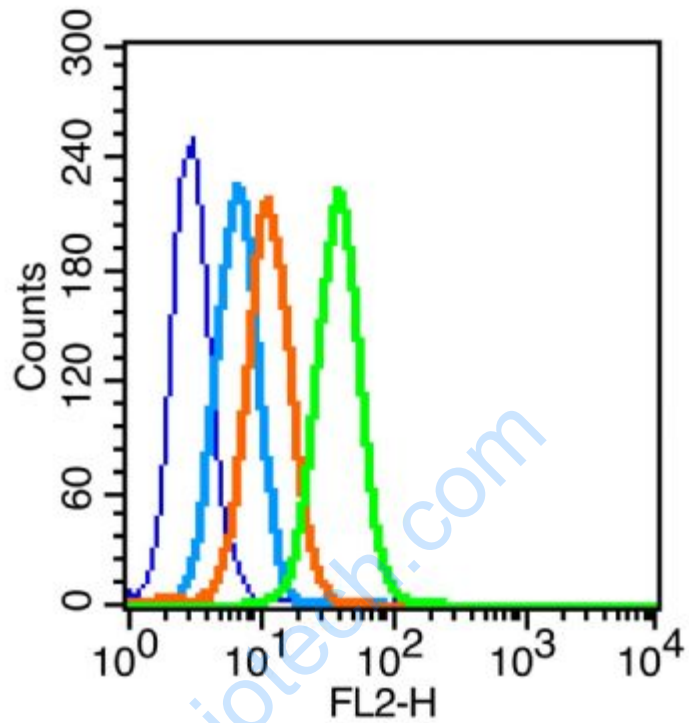
Observed band size: 113 kD



Paraformaldehyde-fixed, paraffin embedded (Mouse kidney); Antigen retrieval by boiling in sodium citrate buffer (pH6.0) for 15min; Block endogenous peroxidase by 3% hydrogen peroxide for 20 minutes; Blocking buffer (normal goat serum) at 37°C for 30min; Antibody incubation with (CD51) Polyclonal Antibody, Unconjugated (SL2250R) at 1:400 overnight at 4°C, followed by operating according to SP Kit(Rabbit) (sp-0023) instructions and DAB staining.



Paraformaldehyde-fixed, paraffin embedded (Human breast carcinoma); Antigen retrieval by boiling in sodium citrate buffer (pH6.0) for 15min; Block endogenous peroxidase by 3% hydrogen peroxide for 20 minutes; Blocking buffer (normal goat serum) at 37°C for 30min; Antibody incubation with (CD51) Polyclonal Antibody, Unconjugated (SL2250R) at 1:400 overnight at 4°C, followed by operating according to SP Kit(Rabbit) (sp-0023) instructions and DAB staining.



Blank control (blue line): MCF7 (fixed with 70% methanol overnight at 4°C).

Primary Antibody (green line): Rabbit Anti-CD51 antibody (SL2250R), Dilution:  
1 $\mu$ g /10<sup>6</sup> cells;

Isotype Control Antibody (orange line): Rabbit IgG .

Secondary Antibody (white blue line): Goat anti-rabbit IgG-PE,Dilution: 1 $\mu$ g /test.