



Rabbit Anti-phospho-KLF5 (Ser311) antibody

SL2303R

Product Name:	phospho-KLF5 (Ser311)
Chinese Name:	磷酸化肠道内富含的Kruppel样因子5抗体
Alias:	KLF5 (phospho Ser311); KLF5 (phospho S311); Kinesin 5B; Klf5; CKLF; Krueppel-like factor 5; Intestinal-enriched krueppel-like factor; Transcription factor BTEB2; Basic transcription element-binding protein 2; BTE-binding protein 2; Krueppel-like factor 5; KLF5; basic transcription element-binding protein 2;BTEB2; intestine enriched krüppel-like factor; IKLF; Kruppel like factor 5; KLF5_HUMAN.
Organism Species:	Rabbit
Clonality:	Polyclonal
React Species:	Human,Mouse,Rat,Dog,Pig,Cow,Horse,Rabbit,
Applications:	ELISA=1:500-1000IHC-P=1:400-800IHC-F=1:400-800IF=1:100-500 (Paraffin sections need antigen repair) not yet tested in other applications. optimal dilutions/concentrations should be determined by the end user.
Molecular weight:	50kDa
Cellular localization:	The nucleus
Form:	Lyophilized or Liquid
Concentration:	1mg/ml
immunogen:	KLH conjugated synthesised phosphopeptide derived from human KLF5 around the phosphorylation site of Ser311:PG(p-S)PD
Lsotype:	IgG
Purification:	affinity purified by Protein A
Storage Buffer:	0.01M TBS(pH7.4) with 1% BSA, 0.03% Proclin300 and 50% Glycerol.
Storage:	Store at -20 °C for one year. Avoid repeated freeze/thaw cycles. The lyophilized antibody is stable at room temperature for at least one month and for greater than a year when kept at -20°C. When reconstituted in sterile pH 7.4 0.01M PBS or diluent of antibody the antibody is stable for at least two weeks at 2-4 °C.
PubMed:	PubMed

Kinesin 5B; Klf5; CKLF; Krueppel-like factor 5; Intestinal-enriched krueppel-like factor; Transcription factor BTEB2; Basic transcription element-binding protein 2; BTE-binding protein 2; Krueppel-like factor 5; KLF5; basic transcription element-binding protein 2;BTEB2; intestine enriched krüppel-like factor; IKLF; Kruppel like factor 5.

Function:

Transcription factor that binds to GC box promoter elements. Activates the transcription of these genes.

Subunit:

Interacts with WWP1.

Subcellular Location:

Nucleus.

Tissue Specificity:

Expressed only in testis and placenta.

Post-translational modifications:

Ubiquitinated. Polyubiquitination involves WWP1 and leads to proteasomal degradation of this protein.

Similarity:

Belongs to the krueppel C2H2-type zinc-finger protein family.
Contains 3 C2H2-type zinc fingers.

SWISS:

Q13887

Gene ID:

688

Database links:

[Entrez Gene: 535702](#)Cow

[Entrez Gene: 688](#)Human

[Entrez Gene: 12224](#)Mouse

[Entrez Gene: 100038005](#)Pig

[Entrez Gene: 84410](#)Rat

[Omim: 602903](#)Human

[SwissProt: Q13887](#)Human

[SwissProt: Q9Z0Z7](#)Mouse

Product Detail:

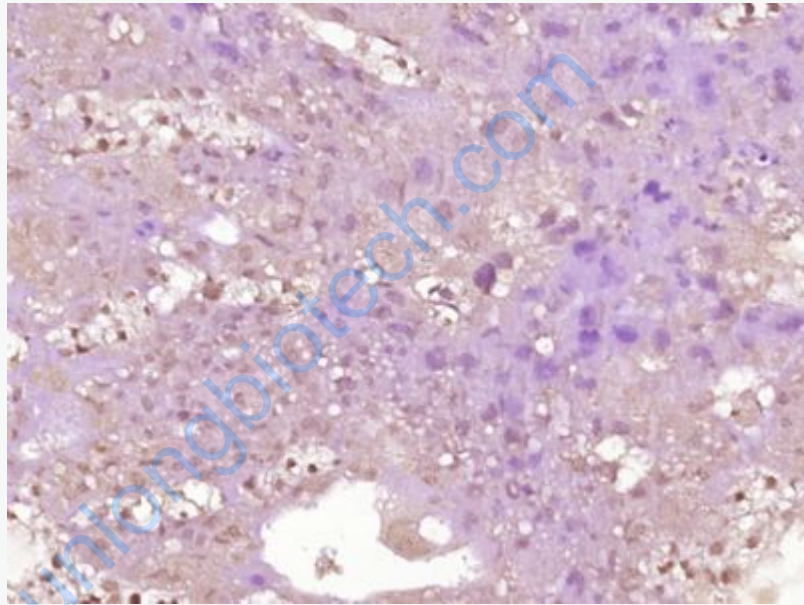
[Unigene: 508234](#)Human

[Unigene: 30262](#)Mouse

[Unigene: 8954](#)Rat

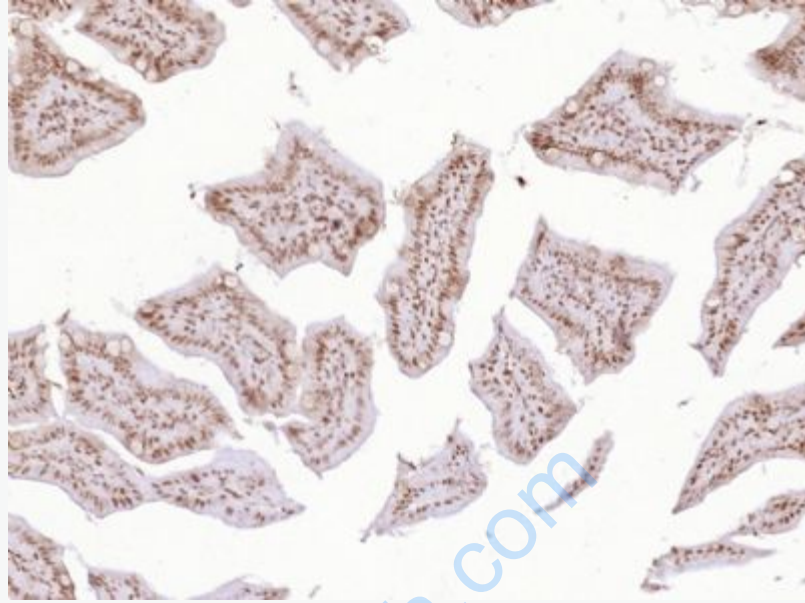
Important Note:

This product as supplied is intended for research use only, not for use in human, therapeutic or diagnostic applications.

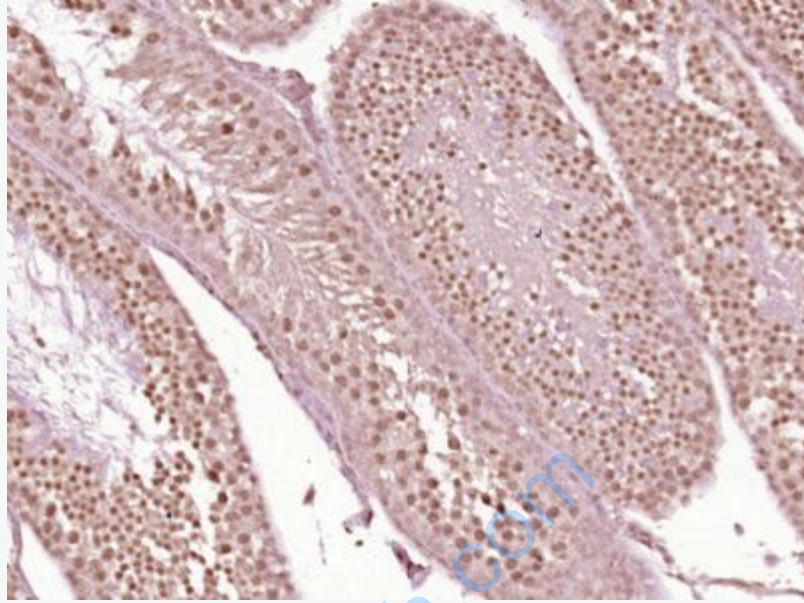


Picture:

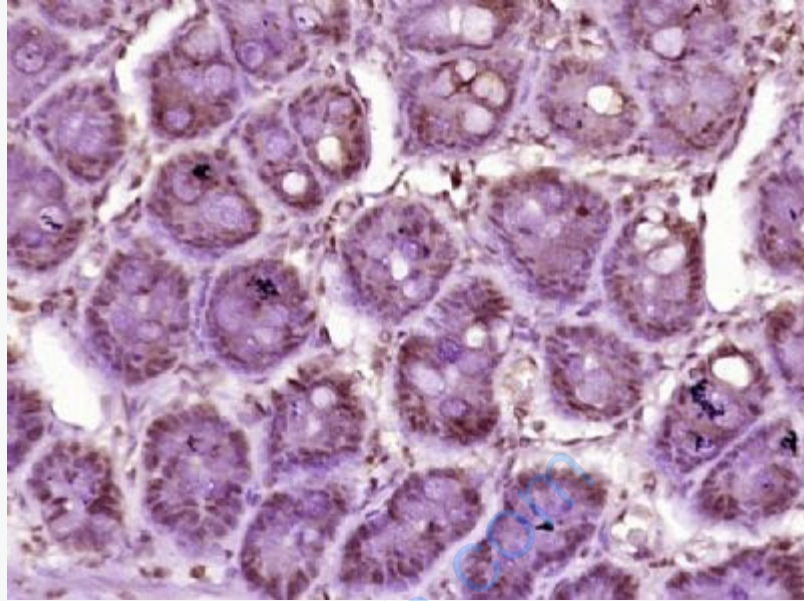
Paraformaldehyde-fixed, paraffin embedded (Mouse placenta); Antigen retrieval by boiling in sodium citrate buffer (pH6.0) for 15min; Block endogenous peroxidase by 3% hydrogen peroxide for 20 minutes; Blocking buffer (normal goat serum) at 37°C for 30min; Antibody incubation with (phospho-KLF5(Ser311)) Polyclonal Antibody, Unconjugated (SL2303R) at 1:400 overnight at 4°C, followed by operating according to SP Kit(Rabbit) (sp-0023) instructions and DAB staining.



Paraformaldehyde-fixed, paraffin embedded (Mouse small intestine); Antigen retrieval by boiling in sodium citrate buffer (pH6.0) for 15min; Block endogenous peroxidase by 3% hydrogen peroxide for 20 minutes; Blocking buffer (normal goat serum) at 37°C for 30min; Antibody incubation with (phospho-KLF5(Ser311)) Polyclonal Antibody, Unconjugated (SL2303R) at 1:400 overnight at 4°C, followed by operating according to SP Kit(Rabbit) (sp-0023) instructions and DAB staining.



Paraformaldehyde-fixed, paraffin embedded (Mouse testis); Antigen retrieval by boiling in sodium citrate buffer (pH6.0) for 15min; Block endogenous peroxidase by 3% hydrogen peroxide for 20 minutes; Blocking buffer (normal goat serum) at 37°C for 30min; Antibody incubation with (phospho-KLF5(Ser311)) Polyclonal Antibody, Unconjugated (SL2303R) at 1:400 overnight at 4°C, followed by operating according to SP Kit(Rabbit) (sp-0023) instructions and DAB staining.



Paraformaldehyde-fixed, paraffin embedded (rat intestine tissue); Antigen retrieval by boiling in sodium citrate buffer (pH6.0) for 15min; Block endogenous peroxidase by 3% hydrogen peroxide for 20 minutes; Blocking buffer (normal goat serum) at 37°C for 30min; Antibody incubation with (KLF5(Ser311)) Polyclonal Antibody, Unconjugated (SL2303R) at 1:400 overnight at 4°C, followed by operating according to SP Kit(Rabbit) (sp-0023) instructions and DAB staining.