



Rabbit Anti-Calpain 1 antibody

SL23048R

Product Name:	Calpain 1
Chinese Name:	钙蛋白酶1抗体
Alias:	Calcium activated neutral proteinase 1; Calpain1; Calpain-1; Calpain 1 catalytic subunit; Calpain large polypeptide L1; Calpain mu type; CANP 1; CANP; CANP1; CANPL1; CAPN 1; CAPN1; Cell proliferation inducing gene 30 protein; Cell proliferation inducing protein 30; Micromolar calpain; muCANP; muCL; Ca2 activated neutral protease; Calcium activated neutral proteinase small subunit; Calcium dependent protease small subunit 1; Calcium-activated neutral proteinase 1; Calpain 1 (mu/I) large subunit; Calpain 1 catalytic subunit; Calpain 1 large subunit; Calpain Large Polypeptide L1; Calpain Large Polypeptide L1; Calpain mu type; Calpain mu-type; Calpain regulatory subunit; Calpain small subunit 1; Calpain-1 catalytic subunit; Calpain-1 large subunit; Calpain1; CAN1 HUMAN.
Organism Species:	Rabbit
Clonality:	Polyclonal
React Species:	Human, Mouse, Rat,
Applications:	ELISA=1:500-1000IHC-P=1:400-800IHC-F=1:400-800ICC=1:100-500IF=1:100-500 (Paraffin sections need antigen repair) not yet tested in other applications. optimal dilutions/concentrations should be determined by the end user.
Molecular weight:	78kDa
Cellular localization:	cytoplasmicThe cell membrane
Form:	Lyophilized or Liquid
Concentration:	1mg/ml
immunogen:	KLH conjugated synthetic peptide derived from human Calpain 1:521-620/713
Lsotype:	IgG
Purification:	affinity purified by Protein A
Storage Buffer:	0.01M TBS(pH7.4) with 1% BSA, 0.03% Proclin300 and 50% Glycerol.
Storage:	Store at -20 °C for one year. Avoid repeated freeze/thaw cycles. The lyophilized antibody is stable at room temperature for at least one month and for greater than a year when kept at -20°C. When reconstituted in sterile pH 7.4 0.01M PBS or diluent of

	antibody the antibody is stable for at least two weeks at 2-4 °C.
PubMed:	PubMed
Product Detail:	<p>The calpains, calcium-activated neutral proteases, are nonlysosomal, intracellular cysteine proteases. The mammalian calpains include ubiquitous, stomach-specific, and muscle-specific proteins. The ubiquitous enzymes consist of heterodimers with distinct large, catalytic subunits associated with a common small, regulatory subunit. This gene encodes the large subunit of the ubiquitous enzyme, calpain 1. Several transcript variants encoding two different isoforms have been found for this gene. [provided by RefSeq, Nov 2010]</p> <p>Function: Calcium-regulated non-lysosomal thiol-protease which catalyze limited proteolysis of substrates involved in cytoskeletal remodeling and signal transduction.</p> <p>Subunit: Forms a heterodimer with a small (regulatory) subunit (CAPNS1).</p> <p>Subcellular Location: Cytoplasm. Cell membrane. Translocates to the plasma membrane upon Ca(2+) binding.</p> <p>Tissue Specificity: Ubiquitous.</p> <p>Post-translational modifications: Undergoes calcium-induced successive autoproteolytic cleavages that generate a membrane-bound 78 kDa active form and an intracellular 75 kDa active form. Calpastatin reduces with high efficiency the transition from 78 kDa to 75 kDa calpain forms.</p> <p>Similarity: Belongs to the peptidase C2 family. Contains 1 calpain catalytic domain. Contains 4 EF-hand domains.</p> <p>SWISS: P07384</p> <p>Gene ID: 823</p> <p>Database links:</p> <p>Entrez Gene: 12333Mouse</p> <p>Entrez Gene: 823Human</p> <p>Entrez Gene: 29153Rat</p>

[Omim: 114220](#)Human

[SwissProt: P07384](#)Human

[SwissProt: O35350](#)Mouse

[SwissProt: P97571](#)Rat

[Unigene: 502842](#)Human

[Unigene: 6221](#)Mouse

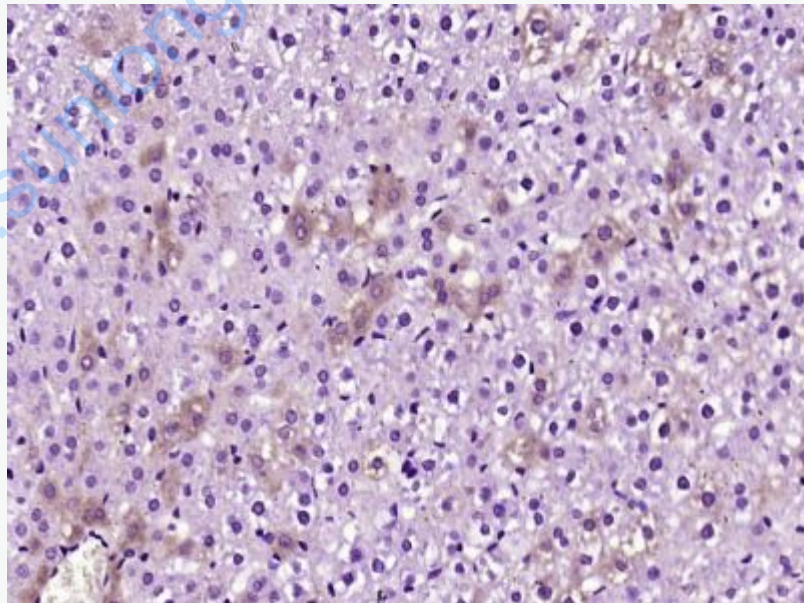
[Unigene: 6037](#)Rat

Important Note:

This product as supplied is intended for research use only, not for use in human, therapeutic or diagnostic applications.

钙蛋白酶(calpain)是一族钙离子依赖性的、水解半胱氨酸的蛋白酶,广泛存在于全身各脏器组织中。钙蛋白酶参与不同细胞过程,包括Cytoskeleton和The cell membrane附着的构型重建、不同的Signal transduction途径和Apoptosis等.

Picture:



Paraformaldehyde-fixed, paraffin embedded (Rat liver); Antigen retrieval by boiling in sodium citrate buffer (pH6.0) for 15min; Block endogenous peroxidase by 3% hydrogen peroxide for 20 minutes; Blocking buffer (normal goat serum) at 37°C for

	<p>30min; Antibody incubation with (CAN1) Polyclonal Antibody, Unconjugated (SL23048R) at 1:500 overnight at 4°C, followed by a conjugated secondary (sp-0023) for 20 minutes and DAB staining.</p>
--	---

www.sunlongbiotech.com