



## Rabbit Anti-E2EPF antibody

SL2305R

<b>Product Name:</b>	E2EPF
<b>Chinese Name:</b>	Ubiquitin交联酶抗体
<b>Alias:</b>	E2 EPF; E2EPF; EPF5; UBE2S; Ubiquitin carrier protein S; Ubiquitin conjugating enzyme E2 24 kD; Ubiquitin conjugating enzyme E2S; Ubiquitin protein ligase S; AA409170; MGC101982; UBE2S HUMAN.
<b>Organism Species:</b>	Rabbit
<b>Clonality:</b>	Polyclonal
<b>React Species:</b>	Human,Mouse,Rat,Dog,Pig,Cow,Horse,Rabbit,
<b>Applications:</b>	ELISA=1:500-1000IHC-P=1:400-800IHC-F=1:400-800IF=1:100-500 (Paraffin sections need antigen repair) not yet tested in other applications. optimal dilutions/concentrations should be determined by the end user.
<b>Molecular weight:</b>	24kDa
<b>Cellular localization:</b>	The nucleuscytoplasmic
<b>Form:</b>	Lyophilized or Liquid
<b>Concentration:</b>	1mg/ml
<b>immunogen:</b>	KLH conjugated synthetic peptide derived from human E2EPF:LL(p-T)EI
<b>Lsotype:</b>	IgG
<b>Purification:</b>	affinity purified by Protein A
<b>Storage Buffer:</b>	0.01M TBS(pH7.4) with 1% BSA, 0.03% Proclin300 and 50% Glycerol.
<b>Storage:</b>	Store at -20 °C for one year. Avoid repeated freeze/thaw cycles. The lyophilized antibody is stable at room temperature for at least one month and for greater than a year when kept at -20°C. When reconstituted in sterile pH 7.4 0.01M PBS or diluent of antibody the antibody is stable for at least two weeks at 2-4 °C.
<b>PubMed:</b>	<a href="#">PubMed</a>
<b>Product Detail:</b>	This gene encodes a member of the ubiquitin-conjugating enzyme family. The encoded protein is able to form a thiol ester linkage with ubiquitin in a ubiquitin activating enzyme-dependent manner, a characteristic property of ubiquitin carrier proteins. [provided by RefSeq, Jul 2008]

**Function:**

Accepts ubiquitin from the E1 complex and catalyzes its covalent attachment to other proteins. Catalyzes 'Lys-11'-linked polyubiquitination. Acts as an essential factor of the anaphase promoting complex/cyclosome (APC/C), a cell cycle-regulated ubiquitin ligase that controls progression through mitosis. Acts by specifically elongating 'Lys-11'-linked polyubiquitin chains initiated by the E2 enzyme UBE2C/UBCH10 on APC/C substrates, enhancing the degradation of APC/C substrates by the proteasome and promoting mitotic exit. Also acts by elongating ubiquitin chains initiated by the E2 enzyme UBE2D1/UBCH5 in vitro; it is however unclear whether UBE2D1/UBCH5 acts as a E2 enzyme for the APC/C in vivo. Also involved in ubiquitination and subsequent degradation of VHL, resulting in an accumulation of HIF1A. In vitro able to promote polyubiquitination using all 7 ubiquitin Lys residues, except 'Lys-48'-linked polyubiquitination.

**Subunit:**

Component of the APC/C complex. Interacts with CDC20, FZR1/CDH1 and VHL.

**Post-translational modifications:**

Autoubiquitinated by the APC/C complex during G1, leading to its degradation by the proteasome.

**Similarity:**

Belongs to the ubiquitin-conjugating enzyme family.

**SWISS:**

Q16763

**Gene ID:**

27338

**Database links:**

[Entrez Gene: 617703](#)Cow

[Entrez Gene: 27338](#)Human

[Entrez Gene: 77891](#)Mouse

[Entrez Gene: 292588](#)Rat

[GenBank: NP\\_055316.2](#)Human

[Omim: 610309](#)Human

[SwissProt: Q1RML1](#)Cow

[SwissProt: Q16763](#)Human

[SwissProt: Q921J4](#)Mouse

[SwissProt: B5DFI8](#)Rat

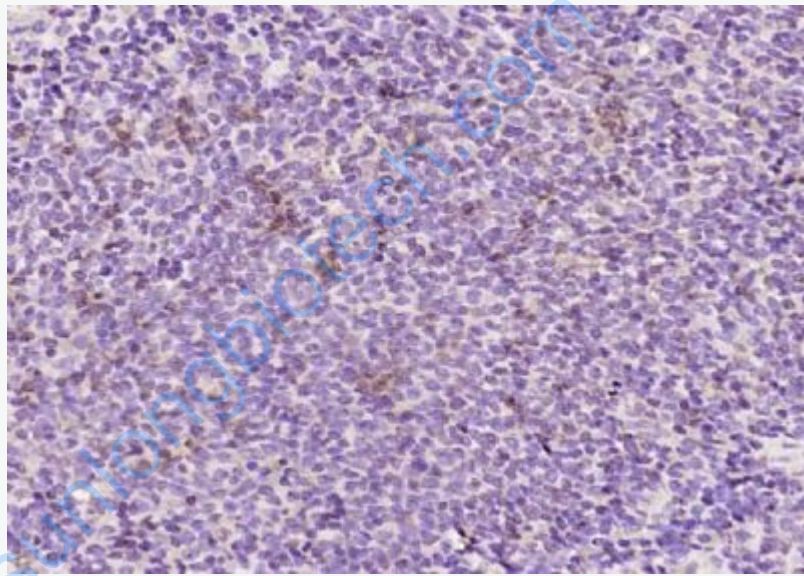
[Unigene: 396393](#)Human

[Unigene: 389787](#)Mouse

[Unigene: 120398](#)Rat

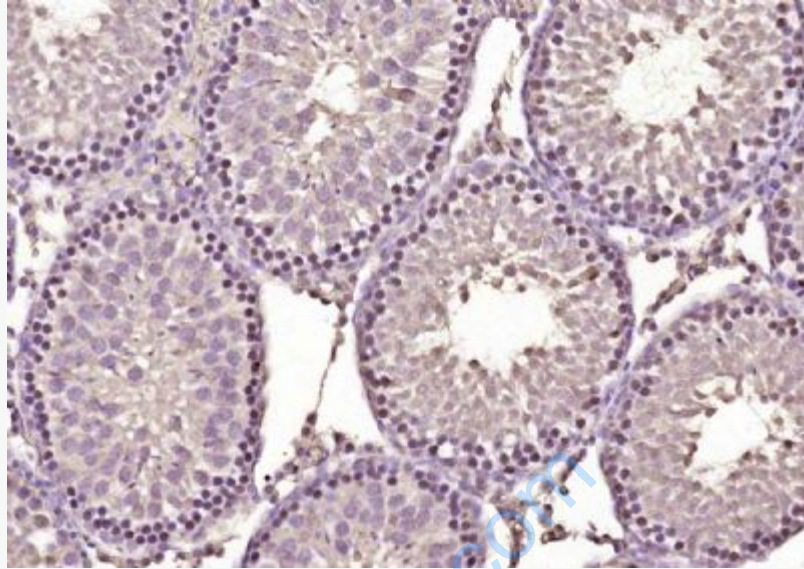
**Important Note:**

This product as supplied is intended for research use only, not for use in human, therapeutic or diagnostic applications.



**Picture:**

Paraformaldehyde-fixed, paraffin embedded (rat spleen); Antigen retrieval by boiling in sodium citrate buffer (pH6.0) for 15min; Block endogenous peroxidase by 3% hydrogen peroxide for 20 minutes; Blocking buffer (normal goat serum) at 37°C for 30min; Antibody incubation with (E2EPF) Polyclonal Antibody, Unconjugated (SL2305R) at 1:200 overnight at 4°C, followed by operating according to SP Kit(Rabbit) (sp-0023) instructions and DAB staining.



Paraformaldehyde-fixed, paraffin embedded (rat testis); Antigen retrieval by boiling in sodium citrate buffer (pH6.0) for 15min; Block endogenous peroxidase by 3% hydrogen peroxide for 20 minutes; Blocking buffer (normal goat serum) at 37°C for 30min; Antibody incubation with (E2EPF) Polyclonal Antibody, Unconjugated (SL2305R) at 1:200 overnight at 4°C, followed by operating according to SP Kit(Rabbit) (sp-0023) instructions and DAB staining.

www.sunongbiotech.com