



Rabbit Anti-Involucrin antibody

SL23062R

Product Name:	Involucrin
Chinese Name:	囊包蛋白/内披蛋白抗体
Alias:	INVO MOUSE; involucrin; ivl.
Organism Species:	Rabbit
Clonality:	Polyclonal
React Species:	Human,Mouse,Rat,
Applications:	WB=1:500-2000ELISA=1:500-1000 not yet tested in other applications. optimal dilutions/concentrations should be determined by the end user.
Molecular weight:	64kDa
Cellular localization:	cytoplasmic
Form:	Lyophilized or Liquid
Concentration:	1mg/ml
immunogen:	KLH conjugated synthetic peptide derived from mouse Involucrin:21-120/467
Lsotype:	IgG
Purification:	affinity purified by Protein A
Storage Buffer:	0.01M TBS(pH7.4) with 1% BSA, 0.03% Proclin300 and 50% Glycerol.
Storage:	Store at -20 °C for one year. Avoid repeated freeze/thaw cycles. The lyophilized antibody is stable at room temperature for at least one month and for greater than a year when kept at -20°C. When reconstituted in sterile pH 7.4 0.01M PBS or diluent of antibody the antibody is stable for at least two weeks at 2-4 °C.
PubMed:	PubMed
Product Detail:	<p>Involucrin, a component of the keratinocyte crosslinked envelope, is found in the cytoplasm and crosslinked to membrane proteins by transglutaminase. This gene is mapped to 1q21, among calpactin I light chain, trichohyalin, profillaggrin, loricrin, and calcyclin. [provided by RefSeq, Jul 2008].</p> <p>Function: Part of the insoluble cornified cell envelope (CE) of stratified squamous epithelia.</p>

Subunit:

Directly or indirectly cross-linked to cornifelin (CNFN).

Subcellular Location:

Cytoplasm.

Tissue Specificity:

Keratinocytes of epidermis and other stratified squamous epithelia.

Post-translational modifications:

Substrate of transglutaminase. Some glutamines and lysines are cross-linked to other involucrin molecules, to other proteins such as keratin, desmoplakin, periplakin and envoplakin, and to lipids like omega-hydroxyceramide.

Similarity:

Belongs to the involucrin family.

SWISS:

P07476

Gene ID:

16447

Database links:

[Entrez Gene: 3713](#)Human

[Entrez Gene: 16447](#)Mouse

[Entrez Gene: 60583](#)Rat

[Omim: 147360](#)Human

[SwissProt: P07476](#)Human

[SwissProt: P48997](#)Mouse

[SwissProt: P48998](#)Rat

[Unigene: 516439](#)Human

[Unigene: 207365](#)Mouse

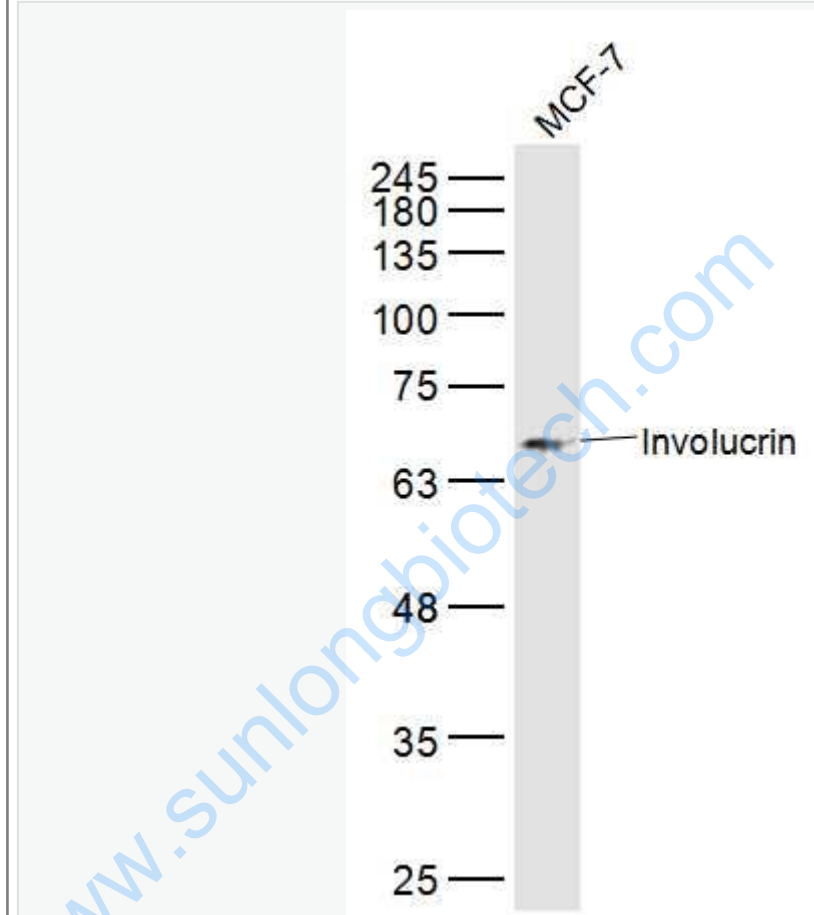
[Unigene: 142591](#)Rat

Important Note:

This product as supplied is intended for research use only, not for use in human, therapeutic or diagnostic applications.

套膜蛋白又称内披蛋白或囊包蛋白，与毛透明蛋白共同构成角质细胞包膜支架的蛋白质。在角质Cell differentiation时，首先出现在表皮棘层的上层细胞中的标志性蛋白质，该蛋白在角质细胞和其他复层扁平上皮合成的蛋白。最初存在于细胞质中，然后通过转谷氨酰胺酶的作用，转变为交联的膜蛋白。

Picture:



Sample:

MCM-7(Human) Cell Lysate at 30 ug

Primary: Anti-Involucrin (SL23062R) at 1/300 dilution

Secondary: IRDye800CW Goat Anti-Rabbit IgG at 1/20000 dilution

Predicted band size: 64 kD

Observed band size: 64 kD