



Rabbit Anti-MMP10 antibody

SL23106R

Product Name:	MMP10
Chinese Name:	基质金属蛋白酶-10抗体
Alias:	Matrix metalloproteinase 10; Matrix metalloproteinase-10; matrix metalloproteinase 10; MMP-10; Mmp10; MMP10_HUMAN; SL 2; SL2; STMY 2; Stromelysin 2; Stromelysin II; Stromelysin-2; Stromelysin2; StromelysinII; Transin 2; Transin-2; Transin2; stromelysin 2; SL-2; STMY2; MMP 10; AV377895, MMP10.
Organism Species:	Rabbit
Clonality:	Polyclonal
React Species:	Human,Mouse,
Applications:	WB=1:500-2000ELISA=1:500-1000IHC-P=1:400-800IHC-F=1:400-800ICC=1:100-500IF=1:100-500 (Paraffin sections need antigen repair) not yet tested in other applications. optimal dilutions/concentrations should be determined by the end user.
Molecular weight:	43kDa
Cellular localization:	Extracellular matrixSecretory protein
Form:	Lyophilized or Liquid
Concentration:	1mg/ml
immunogen:	KLH conjugated synthetic peptide derived from human MMP10:261-360/476
Lsotype:	IgG
Purification:	affinity purified by Protein A
Storage Buffer:	0.01M TBS(pH7.4) with 1% BSA, 0.03% Proclin300 and 50% Glycerol.
Storage:	Store at -20 °C for one year. Avoid repeated freeze/thaw cycles. The lyophilized antibody is stable at room temperature for at least one month and for greater than a year when kept at -20°C. When reconstituted in sterile pH 7.4 0.01M PBS or diluent of antibody the antibody is stable for at least two weeks at 2-4 °C.
PubMed:	PubMed
Product Detail:	Proteins of the matrix metalloproteinase (MMP) family are involved in the breakdown of extracellular matrix in normal physiological processes, such as embryonic development, reproduction, and tissue remodeling, as well as in disease processes, such as arthritis and metastasis. Most MMP's are secreted as inactive proproteins which are

activated when cleaved by extracellular proteinases. The enzyme encoded by this gene degrades proteoglycans and fibronectin. The gene is part of a cluster of MMP genes which localize to chromosome 11q22.3.

Function:

Can degrade fibronectin, gelatins of type I, III, IV, and V; weakly collagens III, IV, and V. Activates procollagenase.

Subcellular Location:

Secreted, extracellular space, extracellular matrix (Probable).

Similarity:

Belongs to the peptidase M10A family.
Contains 4 hemopexin-like domains.

SWISS:

P09238

Gene ID:

4319

Database links:

[Entrez Gene: 4319](#)Human

[Entrez Gene: 17384](#)Mouse

[Entrez Gene: 117061](#)Rat

[Omim: 185260](#)Human

[SwissProt: P09238](#)Human

[SwissProt: O55123](#)Mouse

[SwissProt: P07152](#)Rat

[Unigene: 2258](#)Human

[Unigene: 14126](#)Mouse

[Unigene: 9946](#)Rat

Important Note:

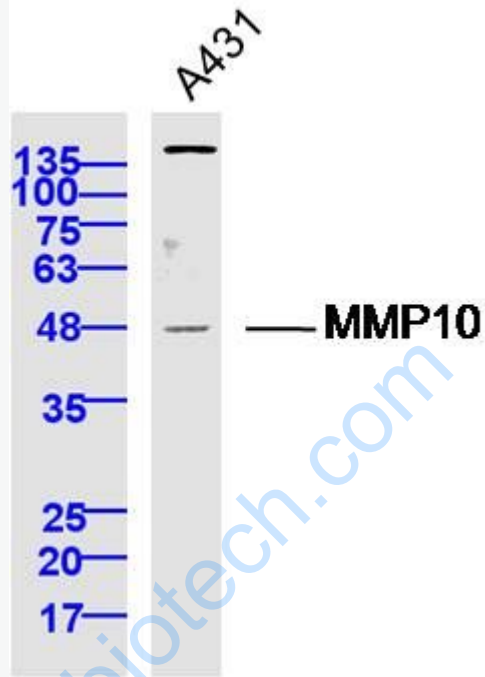
This product as supplied is intended for research use only, not for use in human, therapeutic or diagnostic applications.

Synthesis and Degradation (Synthesis and Degradation)

MMP10主要用于一些恶性Tumour, 如乳腺癌、胃肠道癌、卵巢癌等与转移浸润的

研究。

Picture:



Sample: A431 Cell (Human) Lysate at 40 ug

Primary: Anti-MMP10 (SL23106R) at 1/300 dilution

Secondary: IRDye800CW Goat Anti-Rabbit IgG at 1/20000 dilution

Predicted band size: 43 kD

Observed band size: 47 kD