



Rabbit Anti-Ezrin/Radixin antibody

SL23159R

Product Name:	Ezrin/Radixin
Chinese Name:	埃兹蛋白抗体
Alias:	Ezrin; CVIL; CVL; cytovillin 2; Cytovillin; DKFZp762H157; FLJ26216; MGC1584; p81; VIL 2; VIL2; Villin 2; Villin2; EZRI_HUMAN.
Organism Species:	Rabbit
Clonality:	Polyclonal
React Species:	Human,Mouse,Rat,Dog,Pig,Cow,Horse,
Applications:	ELISA=1:500-1000IHC-P=1:400-800IHC-F=1:400-800ICC=1:100-500IF=1:100-500 (Paraffin sections need antigen repair) not yet tested in other applications. optimal dilutions/concentrations should be determined by the end user.
Molecular weight:	69kDa
Cellular localization:	cytoplasmicThe cell membrane
Form:	Lyophilized or Liquid
Concentration:	1mg/ml
immunogen:	KLH conjugated synthetic peptide derived from human Ezrin/Radixin:481-568/568
Lsotype:	IgG
Purification:	affinity purified by Protein A
Storage Buffer:	0.01M TBS(pH7.4) with 1% BSA, 0.03% Proclin300 and 50% Glycerol.
Storage:	Store at -20 °C for one year. Avoid repeated freeze/thaw cycles. The lyophilized antibody is stable at room temperature for at least one month and for greater than a year when kept at -20°C. When reconstituted in sterile pH 7.4 0.01M PBS or diluent of antibody the antibody is stable for at least two weeks at 2-4 °C.
PubMed:	PubMed
Product Detail:	The cytoplasmic peripheral membrane protein encoded by this gene functions as a protein-tyrosine kinase substrate in microvilli. As a member of the ERM protein family, this protein serves as an intermediate between the plasma membrane and the actin cytoskeleton. This protein plays a key role in cell surface structure adhesion, migration and organization, and it has been implicated in various human cancers. A pseudogene located on chromosome 3 has been identified for this gene. Alternatively spliced variants

have also been described for this gene.

Function:

Probably involved in connections of major cytoskeletal structures to the plasma membrane. In epithelial cells, required for the formation of microvilli and membrane ruffles on the apical pole. Along with PLEKHG6, required for normal macropinocytosis.

Subunit:

Interacts with MPP5 and SLC9A3R2. Found in a complex with EZR, PODXL and SLC9A3R2 (By similarity). Interacts with MCC, PLEKHG6, PODXL, SCYL3/PACE1, SLC9A3R1 and TMEM8B. Interacts (when phosphorylated) with FES/FPS.

Subcellular Location:

Apical cell membrane; Peripheral membrane protein; Cytoplasmic side. Cell projection. Cell projection, microvillus membrane; Peripheral membrane protein; Cytoplasmic side. Cell projection, ruffle membrane; Peripheral membrane protein; Cytoplasmic side. Cytoplasm, cell cortex. Cytoplasm, cytoskeleton. Note=Localization to the apical membrane of parietal cells depends on the interaction with MPP5. Localizes to cell extensions and peripheral processes of astrocytes. Microvillar peripheral membrane protein (cytoplasmic side).

Tissue Specificity:

Expressed in cerebral cortex, basal ganglia, hippocampus, hypophysis, and optic nerve. Weakly expressed in brain stem and diencephalon. Stronger expression was detected in gray matter of frontal lobe compared to white matter (at protein level). Component of the microvilli of intestinal epithelial cells. Preferentially expressed in astrocytes of hippocampus, frontal cortex, thalamus, parahippocampal cortex, amygdala, insula, and corpus callosum. Not detected in neurons in most tissues studied.

Post-translational modifications:

Phosphorylated by tyrosine-protein kinases. Phosphorylation by ROCK2 suppresses the head-to-tail association of the N-terminal and C-terminal halves resulting in an opened conformation which is capable of actin and membrane-binding.

Similarity:

Contains 1 FERM domain.

SWISS:

P15311

Gene ID:

7430

Database links:

[Entrez Gene: 281574](#)Cow

[Entrez Gene: 7430](#)Human

[Entrez Gene: 22350](#)Mouse

[Entrez Gene: 54319](#)Rat

[Oimim: 123900](#)Human

[SwissProt: P31976](#)Cow

[SwissProt: P15311](#)Human

[SwissProt: P26040](#)Mouse

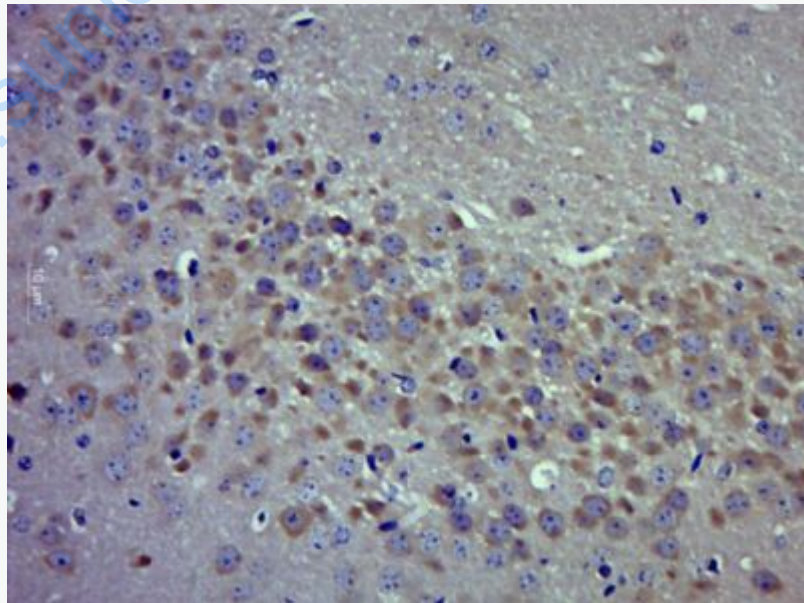
Important Note:

This product as supplied is intended for research use only, not for use in human, therapeutic or diagnostic applications.

信号传导 (Signaling Intermediates)

目前研究发现Ezrin蛋白与维持细胞的形状、极性、生长运动以及Signal transduction方面发挥重要作用, 该蛋白与Tumour的侵袭、转移有关。Erzin是埃兹蛋白 (Ezrin)、根蛋白 (Radxin)、膜突蛋白 (Moesin) (ERM) 家族成员, 是一种位于细胞表面受体, 黏附分子和肌动蛋白Cytoskeleton间的连接蛋白。Ezrin活性由N端和C端ERM缔合结构域间的分子内相互作用所调节。ERM家族在epithelial cells瘤中表达, 它们可能在癌变过程中扮演重要角色。

Picture:



Paraformaldehyde-fixed, paraffin embedded (Mouse brain); Antigen retrieval by boiling in sodium citrate buffer (pH6.0) for 15min; Block endogenous peroxidase by

3% hydrogen peroxide for 20 minutes; Blocking buffer (normal goat serum) at 37°C for 30min; Antibody incubation with (Ezrin/Radixin) Polyclonal Antibody, Unconjugated (SL23159R) at 1:400 overnight at 4°C, followed by operating according to SP Kit(Rabbit) (sp-0023) instructions and DAB staining.

www.sunlongbiotech.com