



Rabbit Anti-Cathepsin L (light chain) antibody

SL23161R

Product Name:	Cathepsin L (light chain)
Chinese Name:	组织蛋白酶L抗体
Alias:	Cathepsin L light chain; CathepsinL; CATL; CTSL; CTSL protein; DKFZp686A18159; FLJ31037; Major excreted protein; MEP; cath-L; CL; CATL1_MOUSE; CathepsinL1; Cathepsin L1,Cathepsin-L1; CTSL 1; CTSL-1,CTS L1,CTS-L1.
Organism Species:	Rabbit
Clonality:	Polyclonal
React Species:	Mouse,Rat,
Applications:	WB=1:500-2000ELISA=1:500-1000 not yet tested in other applications. optimal dilutions/concentrations should be determined by the end user.
Molecular weight:	5/37kDa
Cellular localization:	cytoplasmic
Form:	Lyophilized or Liquid
Concentration:	1mg/ml
immunogen:	KLH conjugated synthetic peptide derived from mouse Cathepsin L (light chain):251-334/334
Lsotype:	IgG
Purification:	affinity purified by Protein A
Storage Buffer:	0.01M TBS(pH7.4) with 1% BSA, 0.03% Proclin300 and 50% Glycerol.
Storage:	Store at -20 °C for one year. Avoid repeated freeze/thaw cycles. The lyophilized antibody is stable at room temperature for at least one month and for greater than a year when kept at -20°C. When reconstituted in sterile pH 7.4 0.01M PBS or diluent of antibody the antibody is stable for at least two weeks at 2-4 °C.
PubMed:	PubMed
Product Detail:	The protein encoded by this gene is a lysosomal cysteine proteinase that plays a major role in intracellular protein catabolism. Its substrates include collagen and elastin, as well as alpha-1 protease inhibitor, a major controlling element of neutrophil elastase activity. The encoded protein has been implicated in several pathologic processes, including myofibril necrosis in myopathies and in myocardial ischemia, and in the renal

tubular response to proteinuria. This protein, which is a member of the peptidase C1 family, is a dimer composed of disulfide-linked heavy and light chains, both produced from a single protein precursor. At least two transcript variants encoding the same protein have been found for this gene.

Function:

Important for the overall degradation of proteins in lysosomes.

Subunit:

Dimer of a heavy and a light chain linked by disulfide bonds.

Subcellular Location:

Lysosome.

Similarity:

Belongs to the peptidase C1 family.

SWISS:

P07711

Gene ID:

13039

Database links:

[Entrez Gene: 1514](#)Human

[Entrez Gene: 13039](#)Mouse

[Entrez Gene: 25697](#)Rat

[Omim: 116880](#)Human

[SwissProt: P07711](#)Human

[SwissProt: P06797](#)Mouse

[SwissProt: P07154](#)Rat

[Unigene: 726015](#)Human

[Unigene: 930](#)Mouse

[Unigene: 1294](#)Rat

Important Note:

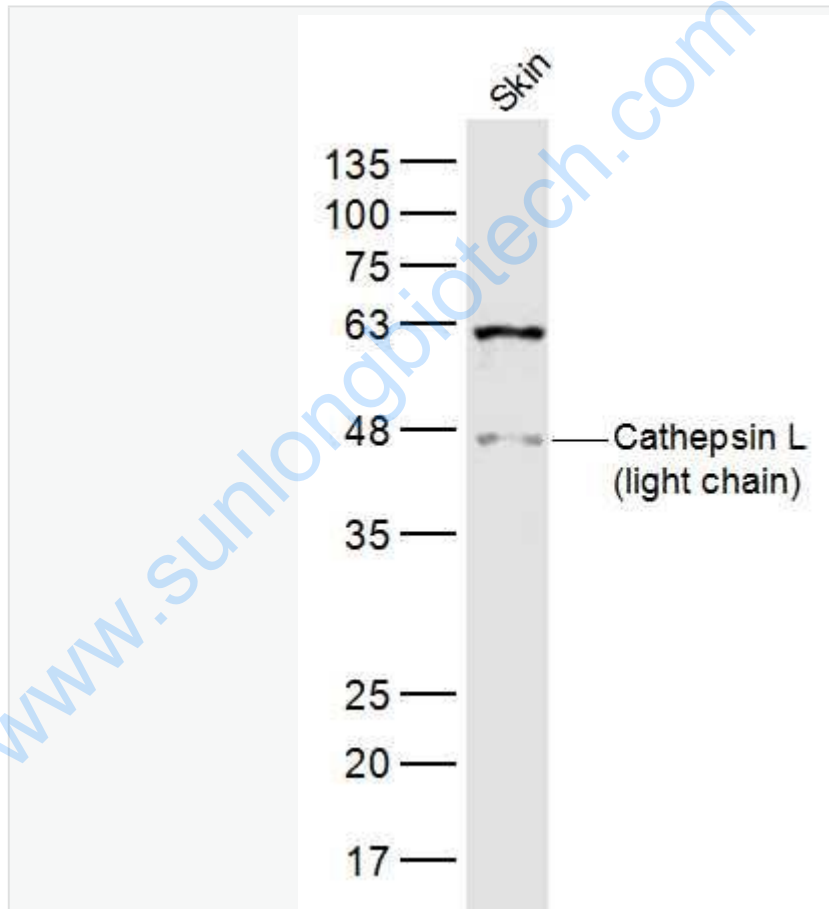
This product as supplied is intended for research use only, not for use in human, therapeutic or diagnostic applications.

Synthesis and Degradation (Synthesis and Degradation)

组织蛋白酶L(cathepsin L

CL)属于木瓜蛋白酶家族中的半胱氨酸蛋白水解酶,以酶原的形式贮存于溶酶体中.参与许多特殊的生理过程,如激素原的激活、抗原呈递、组织器官的发育等。在病理状态下,因各种原因所致的细胞损伤(如病原微生物、炎症因子、氧化应激等)可降解细胞成分或细胞间质基质成分,包括层粘素、IV型胶原纤维及纤维连接素等,与人类许多疾病如Tumour的浸润与转移、关节炎、骨质疏松、阿尔茨海姆病、多发性硬化症及其他慢性炎症性疾病有关。

Picture:



Sample:

Skin (Rat) Lysate at 40 ug

Primary: Anti- Cathepsin L (light chain) (SL23161R) at 1/300 dilution

Secondary: IRDye800CW Goat Anti-Rabbit IgG at 1/20000 dilution

	<p>Predicted band size: 5/37 kD</p>
--	-------------------------------------

	<p>Observed band size: 47 kD</p>
--	----------------------------------

www.sunlongbiotech.com