



Rabbit Anti-FGF21 antibody

SL2318R

| | |
|--------------------------------|--|
| Product Name: | FGF21 |
| Chinese Name: | 成纤维细胞生长因子21抗体 |
| Alias: | FGF 21; FGF21; FGF-21; FGFL; Fibroblast growth factor 21. |
| 文献引用 PubMed : | Specific References(1) SL2318R has been referenced in 1 publications. [IF=2.86] Dong, Liwei, et al. "Echinacoside Induces Apoptosis in Human SW480 Colorectal Cancer Cells by Induction of Oxidative DNA Damages." International Journal of Molecular Sciences 16.7 (2015): 14655-14668. WB;Human. PubMed:26132569 |
| Organism Species: | Rabbit |
| Clonality: | Polyclonal |
| React Species: | Human,Mouse,Rat,Dog,Pig,Cow, |
| Applications: | ELISA=1:500-1000IHC-P=1:400-800IHC-F=1:400-800IF=1:100-500 (Paraffin sections need antigen repair) not yet tested in other applications. optimal dilutions/concentrations should be determined by the end user. |
| Molecular weight: | 20kDa |
| Cellular localization: | Secretory protein |
| Form: | Lyophilized or Liquid |
| Concentration: | 1mg/ml |
| immunogen: | KLH conjugated synthetic peptide derived from human FGF21:29-120/208 |
| Lsotype: | IgG |
| Purification: | affinity purified by Protein A |
| Storage Buffer: | 0.01M TBS(pH7.4) with 1% BSA, 0.03% Proclin300 and 50% Glycerol. |
| Storage: | Store at -20 °C for one year. Avoid repeated freeze/thaw cycles. The lyophilized antibody is stable at room temperature for at least one month and for greater than a year when kept at -20°C. When reconstituted in sterile pH 7.4 0.01M PBS or diluent of antibody the antibody is stable for at least two weeks at 2-4 °C. |

PubMed:[PubMed](#)

FGF21 is a growth factor that is a member of the FGF family. Proteins of this family play a central role during prenatal development and postnatal growth and regeneration of a variety of tissues, by promoting cellular proliferation and differentiation. FGF21, in the presence of betaKlotho as a protein cofactor, signals through the FGFR 1c and 4 receptors and stimulates insulin independent glucose uptake by adipocytes.

Function:

Stimulates glucose uptake in differentiated adipocytes via the induction of glucose transporter SLC2A1/GLUT1 expression (but not SLC2A4/GLUT4 expression). Activity requires the presence of KLB.

Subcellular Location:

Secreted.

Tissue Specificity:

Stimulates glucose uptake in differentiated adipocytes via the induction of glucose transporter SLC2A1/GLUT1 expression (but not SLC2A4/GLUT4 expression). Activity requires the presence of KLB.

SWISS:

Q9NSA1

Product Detail:**Gene ID:**

26291

Database links:

[Entrez Gene: 26291](#)Human

[Entrez Gene: 56636](#)Mouse

[Entrez Gene: 170580](#)Rat

[Omim: 609436](#)Human

[SwissProt: Q9NSA1](#)Human

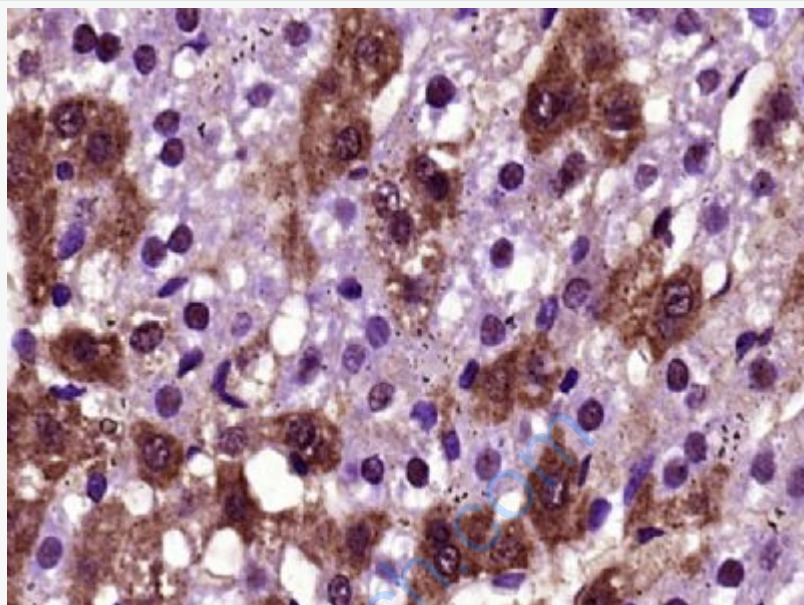
[SwissProt: Q9JJN1](#)Mouse

[Unigene: 283015](#)Human

[Unigene: 143736](#)Mouse

Important Note:

This product as supplied is intended for research use only, not for use in human, therapeutic or diagnostic applications.



Picture:

Paraformaldehyde-fixed, paraffin embedded (Rat liver); Antigen retrieval by boiling in sodium citrate buffer (pH6.0) for 15min; Block endogenous peroxidase by 3% hydrogen peroxide for 20 minutes; Blocking buffer (normal goat serum) at 37°C for 30min; Antibody incubation with (FGF21) Polyclonal Antibody, Unconjugated (SL2318R) at 1:400 overnight at 4°C, followed by operating according to SP Kit(Rabbit) (sp-0023) instructions and DAB staining.