



## Rabbit Anti-Caspase-7 p11 antibody

SL2322R

<b>Product Name:</b>	Caspase-7 p11
<b>Chinese Name:</b>	半胱氨酸蛋白酶蛋白-7抗体
<b>Alias:</b>	caspase-7 isoform alpha subunit p11; Apoptosis related cysteine peptidase; Apoptosis Related Cysteine Protease; Apoptotic Protease MCH3; CASP 7; CASP7; Caspase7; Caspase 7; CMH 1; CMH1; ICE LAP3; ICE like Apoptotic Protease 3; MCH3; CASP7 HUMAN.
<b>Organism Species:</b>	Rabbit
<b>Clonality:</b>	Polyclonal
<b>React Species:</b>	Human,Mouse,Rat,Chicken,Dog,Pig,Cow,Horse,Rabbit,
<b>Applications:</b>	ELISA=1:500-1000IHC-P=1:400-800IHC-F=1:400-800IF=1:100-500 (Paraffin sections need antigen repair) not yet tested in other applications. optimal dilutions/concentrations should be determined by the end user.
<b>Molecular weight:</b>	11/33kDa
<b>Cellular localization:</b>	cytoplasmic
<b>Form:</b>	Lyophilized or Liquid
<b>Concentration:</b>	1mg/ml
<b>immunogen:</b>	KLH conjugated synthetic peptide derived from human caspase-7 isoform alpha subunit p11:211-303/303
<b>Lsotype:</b>	IgG
<b>Purification:</b>	affinity purified by Protein A
<b>Storage Buffer:</b>	0.01M TBS(pH7.4) with 1% BSA, 0.03% Proclin300 and 50% Glycerol.
<b>Storage:</b>	Store at -20 °C for one year. Avoid repeated freeze/thaw cycles. The lyophilized antibody is stable at room temperature for at least one month and for greater than a year when kept at -20°C. When reconstituted in sterile pH 7.4 0.01M PBS or diluent of antibody the antibody is stable for at least two weeks at 2-4 °C.
<b>PubMed:</b>	<a href="#">PubMed</a>
<b>Product Detail:</b>	This gene encodes a protein which is a member of the cysteine-aspartic acid protease (caspase) family. Sequential activation of caspases plays a central role in the execution-phase of cell apoptosis. Caspases exist as inactive proenzymes which undergo

proteolytic processing at conserved aspartic residues to produce two subunits, large and small, that dimerize to form the active enzyme. The precursor of this caspase is cleaved by caspase3 and 10. It is activated upon cell death stimuli and induces apoptosis. Alternative splicing results in four transcript variants, encoding three distinct isoforms. [provided by RefSeq].

**Function:**

Involved in the activation cascade of caspases responsible for apoptosis execution. Cleaves and activates sterol regulatory element binding proteins (SREBPs). Proteolytically cleaves poly(ADP-ribose) polymerase (PARP) at a '216-Asp-|-Gly-217' bond. Overexpression promotes programmed cell death.

**Subunit:**

Heterotetramer that consists of two anti-parallel arranged heterodimers, each one formed by a 20 kDa (p20) and a 11 kDa (p11) subunit. Interacts with BIRC6/bruce.

**Subcellular Location:**

Cytoplasm.

**Tissue Specificity:**

Highly expressed in lung, skeletal muscle, liver, kidney, spleen and heart, and moderately in testis. No expression in the brain.

**Post-translational modifications:**

Cleavages by granzyme B or caspase-10 generate the two active subunits. Propeptide domains can also be cleaved efficiently by caspase-3. Active heterodimers between the small subunit of caspase-7 and the large subunit of caspase-3, and vice versa, also occur.

**Similarity:**

Belongs to the peptidase C14A family.

**SWISS:**

P55210

**Gene ID:**

840

**Database links:**

[Entrez Gene: 486896](#)Dog

[Entrez Gene: 840](#)Human

[Entrez Gene: 697633](#)Monkey

[Entrez Gene: 12369](#)Mouse

[Entrez Gene: 100156777](#)Pig

[Entrez Gene: 64026](#)Rat

[Oimim: 601761](#)Human

[SwissProt: P55214](#)Hamster

[SwissProt: P55210](#)Human

[SwissProt: P97864](#)Mouse

[Unigene: 9216](#)Human

[Unigene: 35687](#)Mouse

[Unigene: 53995](#)Rat

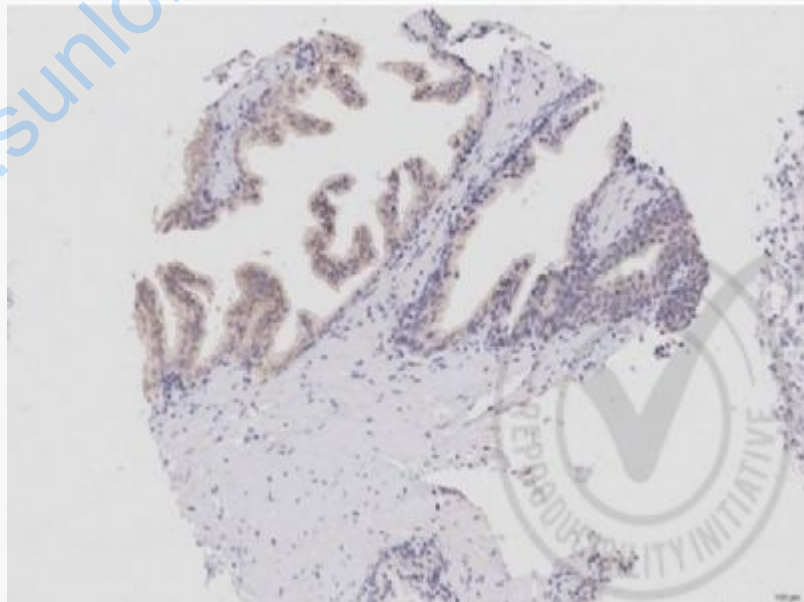
**Important Note:**

This product as supplied is intended for research use only, not for use in human, therapeutic or diagnostic applications.

Caspase-7(MCH3)—属于胱氨酸-

天冬氨酸蛋白酶家族, 在凋亡执行阶段起中心作用。Caspase-7受Caspase-3, -10的剪切活化, 在其保守的天冬氨酸处被切成两个片段后聚合成活性酶。

**Picture:**



Images provided the Independent Validation Program (badge number

029653)Formalin-fixed and paraffin embedded human prostate labeled with Rabbit

	Anti-Caspase-7 Polyclonal Antibody (SL2322R) at 1:250 overnight at room temperature followed by conjugation to secondary antibody.
--	--

[www.sunlongbiotech.com](http://www.sunlongbiotech.com)