



## Rabbit Anti-IGF2R/M6PR antibody

SL23240R

<b>Product Name:</b>	IGF2R/M6PR
<b>Chinese Name:</b>	胰岛素样生长因子2受体抗体
<b>Alias:</b>	300 kDa mannose 6-phosphate receptor; Cation independent mannose 6 phosphate receptor; Cation-independent mannose-6-phosphate receptor; CD222; CD222 antigen; CI Man 6 P receptor; CI Man-6-P receptor; CI MPR; CI-MPR; CIMPR; IGF 2 receptor; IGF 2R; IGF II receptor; IGF-II receptor; IGF2 receptor; IGF2R; Insulin like growth factor 2 receptor; Insulin like growth factor II receptor; Insulin-like growth factor 2 receptor; Insulin-like growth factor II receptor; M6P R; M6P/IGF2 receptor; M6P/IGF2R; M6PR; MPR 300; MPR300; MPRI; MPRI_HUMAN.
<b>Organism Species:</b>	Rabbit
<b>Clonality:</b>	Polyclonal
<b>React Species:</b>	Human,Mouse,Rat,Cow,
<b>Applications:</b>	ELISA=1:500-1000Flow-Cyt=1ug/Test not yet tested in other applications. optimal dilutions/concentrations should be determined by the end user.
<b>Molecular weight:</b>	300kDa
<b>Cellular localization:</b>	cytoplasmicThe cell membraneExtracellular matrix
<b>Form:</b>	Lyophilized or Liquid
<b>Concentration:</b>	1mg/ml
<b>immunogen:</b>	KLH conjugated synthetic peptide derived from human IGF2R/M6PR:701-800/2491
<b>Lsotype:</b>	IgG
<b>Purification:</b>	affinity purified by Protein A
<b>Storage Buffer:</b>	0.01M TBS(pH7.4) with 1% BSA, 0.03% Proclin300 and 50% Glycerol.
<b>Storage:</b>	Store at -20 °C for one year. Avoid repeated freeze/thaw cycles. The lyophilized antibody is stable at room temperature for at least one month and for greater than a year when kept at -20°C. When reconstituted in sterile pH 7.4 0.01M PBS or diluent of antibody the antibody is stable for at least two weeks at 2-4 °C.
<b>PubMed:</b>	<a href="#">PubMed</a>
<b>Product Detail:</b>	Transport of phosphorylated lysosomal enzymes from the Golgi complex and the cell surface to lysosomes. Lysosomal enzymes bearing phosphomannosyl residues bind

specifically to mannose-6-phosphate receptors in the Golgi apparatus and the resulting receptor-ligand complex is transported to an acidic prelysosomal compartment where the low pH mediates the dissociation of the complex. This receptor also binds IGF2. Acts as a positive regulator of T-cell coactivation, by binding DPP4.

**Function:**

Transport of phosphorylated lysosomal enzymes from the Golgi complex and the cell surface to lysosomes. Lysosomal enzymes bearing phosphomannosyl residues bind specifically to mannose-6-phosphate receptors in the Golgi apparatus and the resulting receptor-ligand complex is transported to an acidic prelysosomal compartment where the low pH mediates the dissociation of the complex. This receptor also binds IGF2. Acts as a positive regulator of T-cell coactivation, by binding DPP4.

**Subunit:**

Binds HA-I and HA-II plasma membrane adapters (By similarity). Interacts with DPP4; the interaction is direct. Binds GGA1, GGA2 and GGA3.

**Subcellular Location:**

Lysosome membrane. Colocalized with DPP4 in internalized cytoplasmic vesicles adjacent to the cell surface.

**Similarity:**

Belongs to the MRL1/IGF2R family.  
Contains 1 fibronectin type-II domain.

**SWISS:**

P11717

**Gene ID:**

3482

**Database links:**

[Entrez Gene: 281849](#)Cow

[Entrez Gene: 3482](#)Human

[Entrez Gene: 16004](#)Mouse

[Entrez Gene: 25151](#)Rat

[Omim: 147280](#)Human

[SwissProt: P08169](#)Cow

[SwissProt: P11717](#)Human

[SwissProt: Q07113](#)Mouse

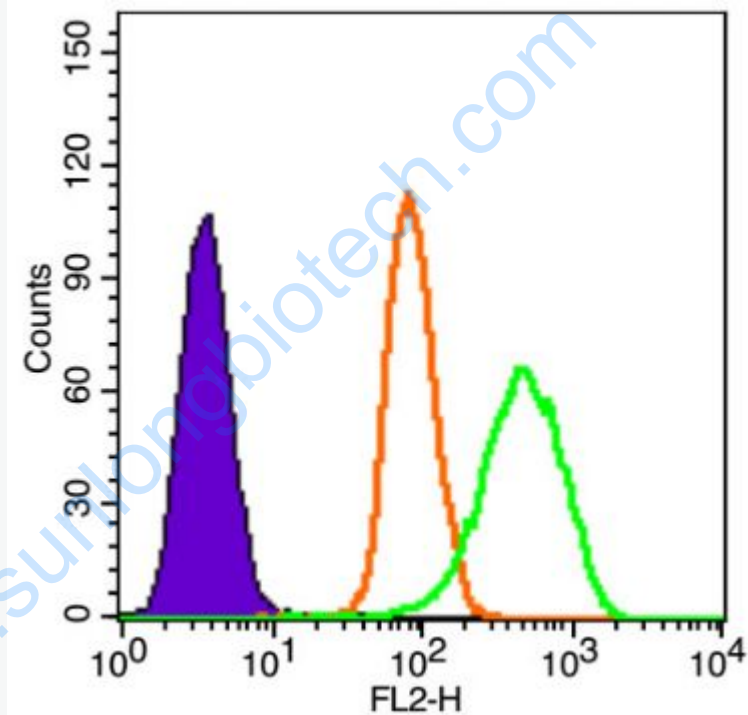
[Unigene: 487062](#)Human

[Unigene: 26553](#)Mouse

**Important Note:**

This product as supplied is intended for research use only, not for use in human, therapeutic or diagnostic applications.

Picture:



Blank control (Black line): Molt4(Black).

Primary Antibody (green line): Rabbit Anti-IGF2R/M6PR antibody (SL23240R)

Dilution:  $1\mu\text{g} / 10^6$  cells;

Isotype Control Antibody (orange line): Rabbit IgG .

Secondary Antibody (white blue line): Goat anti-rabbit IgG-PE

Dilution:  $1\mu\text{g} / \text{test}$ .

#### Protocol

The cells were fixed with 4% PFA (10min at room temperature) and then permeabilized with 90% ice-cold methanol for 20 min at room temperature. The cells were then incubated in 5% BSA to block non-specific protein-protein interactions for 15 min at room temperature. Cells stained with Primary Antibody for 30 min at room temperature. The secondary antibody used for 40 min at room temperature. Acquisition of 20,000 events was performed.