



## Rabbit Anti-Osteopontin antibody

SL23258R

<b>Product Name:</b>	Osteopontin
<b>Chinese Name:</b>	骨桥蛋白/分泌型磷蛋白1抗体
<b>Alias:</b>	BNSP; Bone sialoprotein 1; BSP I; BSPI; Early T lymphocyte activation 1; ETA 1; ETA1; MGC110940; Nephropontin; OPN; osteopontin/immunoglobulin alpha 1 heavy chain constant region fusion protein; OSTP_HUMAN; secreted phosphoprotein 1 (osteopontin, bone sialoprotein I, early T-lymphocyte activation 1); Secreted phosphoprotein 1; SPP 1; SPP-1; SPP1; SPP1/CALPHA1 fusion; Urinary stone protein; Uropontin.
<b>Organism Species:</b>	Rabbit
<b>Clonality:</b>	Polyclonal
<b>React Species:</b>	Human,Rat,
<b>Applications:</b>	WB=1:500-2000ELISA=1:500-1000IHC-P=1:400-800IHC-F=1:400-800ICC=1:100-500IF=1:100-500 (Paraffin sections need antigen repair) not yet tested in other applications. optimal dilutions/concentrations should be determined by the end user.
<b>Molecular weight:</b>	34kDa
<b>Cellular localization:</b>	Secretory protein
<b>Form:</b>	Lyophilized or Liquid
<b>Concentration:</b>	1mg/ml
<b>immunogen:</b>	KLH conjugated synthetic peptide derived from rat osteopontin:201-314/314
<b>Lsotype:</b>	IgG
<b>Purification:</b>	affinity purified by Protein A
<b>Storage Buffer:</b>	0.01M TBS(pH7.4) with 1% BSA, 0.03% Proclin300 and 50% Glycerol.
<b>Storage:</b>	Store at -20 °C for one year. Avoid repeated freeze/thaw cycles. The lyophilized antibody is stable at room temperature for at least one month and for greater than a year when kept at -20°C. When reconstituted in sterile pH 7.4 0.01M PBS or diluent of antibody the antibody is stable for at least two weeks at 2-4 °C.
<b>PubMed:</b>	<a href="#">PubMed</a>
<b>Product Detail:</b>	Osteopontin is the principal phosphorylated glycoprotein of bone and is expressed in a limited number of other tissues including dentine. Osteopontin is produced by

osteoblasts under stimulation by calcitriol and binds tightly to hydroxyapatite. It is also involved in the anchoring of osteoclasts to the mineral of bone matrix via the vitronectin receptor, which has specificity for osteopontin. Osteopontin is overexpressed in a variety of cancers, including lung, breast, colorectal, stomach, ovarian, melanoma and mesothelioma.

**Subunit:**

Ligand for integrin alpha-V/beta-3.

**Subcellular Location:**

Secreted.

**Tissue Specificity:**

Bone. Found in plasma.

**Similarity:**

Belongs to the osteopontin family.

**SWISS:**

P10451

**Gene ID:**

25353

**Database links:**

[Entrez Gene: 6696](#)Human

[Entrez Gene: 20750](#)Mouse

[Entrez Gene: 25353](#)Rat

[Omin: 166490](#)Human

[SwissProt: P10451](#)Human

[SwissProt: P10923](#)Mouse

[SwissProt: P08721](#)Rat

[Unigene: 313](#)Human

**Important Note:**

This product as supplied is intended for research use only, not for use in human, therapeutic or diagnostic applications.

骨桥蛋白 (osteopontin) 又称为早期Tlymphocyte活化因子I或分泌型磷蛋白I,是一种重要的多功能Extracellular

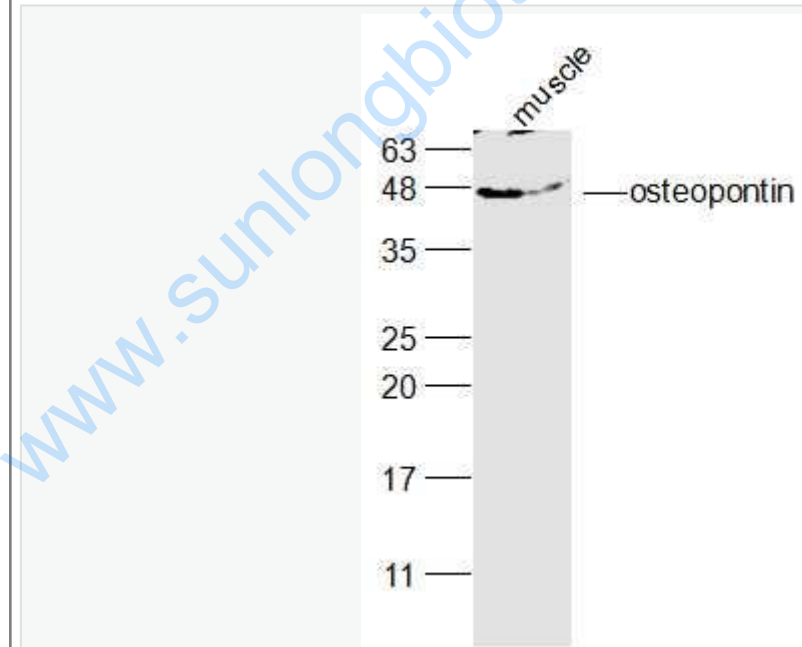
matrix蛋白,在骨组织细胞、巨噬细胞、平滑肌细胞、endothelial cells及epithelial cells等多种细胞上表达,在介导细胞的趋化、聚集、黏附、增殖和迁移,以及骨组织的矿化与重建、免疫调节、Signal transduction和对感染性疾病的免疫能力等方面有着重要的作用。

OPN在细胞免疫中的功能:1.OPN对炎性细胞的作用:炎症是炎性细胞(单核巨噬细胞、lymphocyte、中性粒细胞等)在炎症部位的聚集,适度的炎症对机体有益,如抗感染及促进组织细胞功能恢复等;但过度的炎症能引起组织损伤等有害作用。OPN在炎症中具有促炎及抗炎双重作用;2.OPN对lymphocyte的作用:早期的报道称OPN是Tlymphocyte抑制因子,它可抑制Tlymphocyte而促进Blymphocyte及肥大细胞的分化、增殖

骨桥蛋白(osteopontin, OPN)是一种含精氨酸—甘氨酸—天冬氨酸(Arg-Gly-Asp, RGD)的分泌型糖基化磷蛋白,已归类于Extracellular matrix(extracellular matrix, ECM)蛋白。OPN既是cell factor,又是细胞黏附分子。

OPN最初是从骨组织分离的,而后在epithelial cells、胃肠道的分泌物、肾、甲状腺、睾丸以及一些Tumour细胞里都陆续的发现了OPN的表达。在生殖方面,OPN在分泌期子宫内膜epithelial cells、侵袭的滋养细胞、蜕膜细胞中表达。

Picture:



Sample:

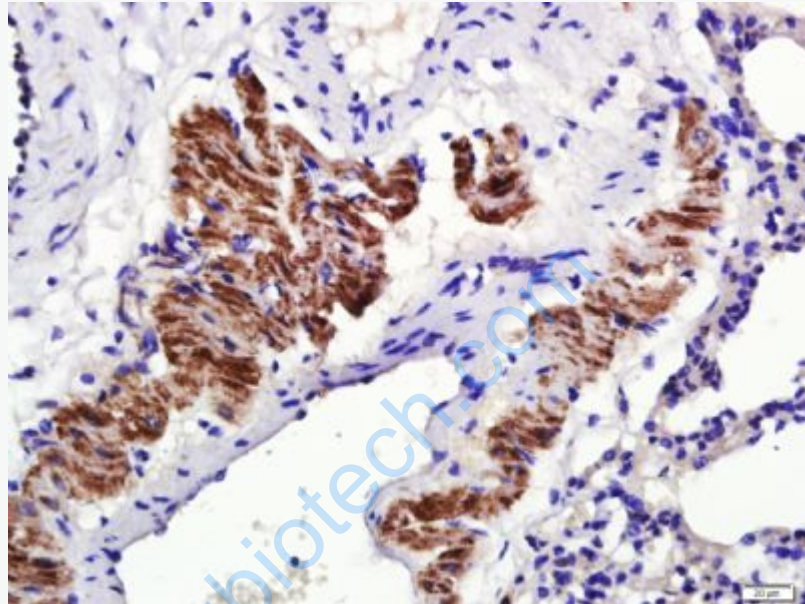
muscle (Rat) Lysate at 40 ug

Primary: Anti-osteopontin (SL23258R) at 1/300 dilution

Secondary: IRDye800CW Goat Anti-Rabbit IgG at 1/20000 dilution

Predicted band size: 34 kD

Observed band size: 48 kD



Paraformaldehyde-fixed, paraffin embedded (Rat lung); Antigen retrieval by boiling in sodium citrate buffer (pH6.0) for 15min; Block endogenous peroxidase by 3% hydrogen peroxide for 20 minutes; Blocking buffer (normal goat serum) at 37°C for 30min; Antibody incubation with (osteopontin) Polyclonal Antibody, Unconjugated (SL23258R) at 1:400 overnight at 4°C, followed by a conjugated secondary (sp-0023) for 20 minutes and DAB staining.