



Rabbit Anti-GAS2L3 antibody

SL23297R

Product Name:	GAS2L3
Chinese Name:	生长停滞特异性蛋白2家族3抗体
Alias:	GAS2 like protein 3; Gas2l3; Gm240; Growth arrest specific 2 like 3; Growth arrest specific protein 2 like 3; GA2L3_HUMAN.
Organism Species:	Rabbit
Clonality:	Polyclonal
React Species:	Human,Mouse,Rat,Dog,Rabbit,
Applications:	IHC-P=1:400-800IHC-F=1:400-800ICC=1:100-500IF=1:100-500 (Paraffin sections need antigen repair) not yet tested in other applications. optimal dilutions/concentrations should be determined by the end user.
Molecular weight:	75kDa
Cellular localization:	cytoplasmic
Form:	Lyophilized or Liquid
Concentration:	1mg/ml
immunogen:	KLH conjugated synthetic peptide derived from human GAS2L3:251-350/694
Lsotype:	IgG
Purification:	affinity purified by Protein A
Storage Buffer:	0.01M TBS(pH7.4) with 1% BSA, 0.03% Proclin300 and 50% Glycerol.
Storage:	Store at -20 °C for one year. Avoid repeated freeze/thaw cycles. The lyophilized antibody is stable at room temperature for at least one month and for greater than a year when kept at -20°C. When reconstituted in sterile pH 7.4 0.01M PBS or diluent of antibody the antibody is stable for at least two weeks at 2-4 °C.
PubMed:	PubMed
Product Detail:	<p>GAS2L3 (Growth arrest-specific 2 like 3) a member of the GAS2 family, is similar in sequence to the mouse protein GAS2, an actin-associated protein expressed at high levels in growth-arrested cells. The specific function of this protein is unknown.</p> <p>Function: Cytoskeletal linker protein. May promote and stabilize the formation of the actin and</p>

microtubule network.

Subunit:

Interacts (via CH domain) with F-actin. Interacts (via C terminus) with microtubules.

Subcellular Location:

Cytoplasm

Tissue Specificity:

Expressed in the pancreas, heart, liver, placenta, brain, skeletal muscle, kidney and lung.

Similarity:

Belongs to the GAS2 family.

Contains 1 CH (calponin-homology) domain.

Contains 1 GAR domain.

SWISS:

Q86XJ1

Gene ID:

283431

Database links:

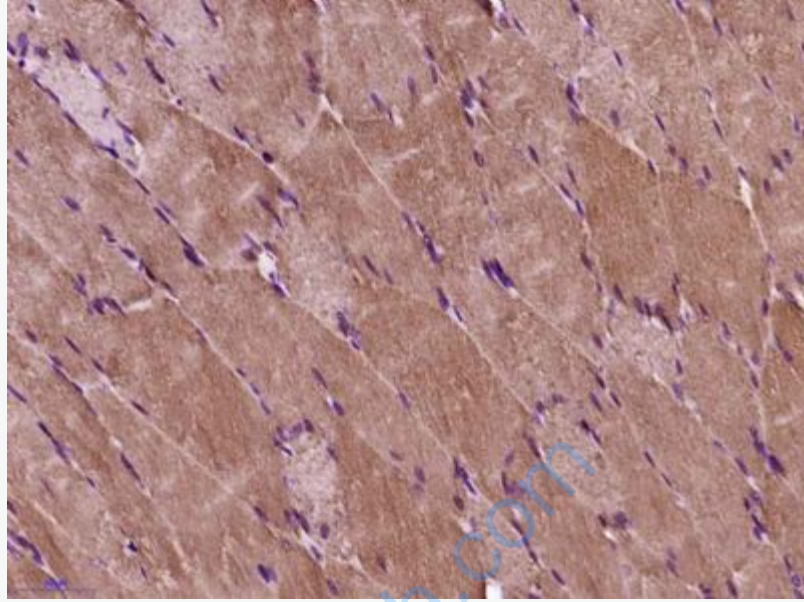
[Entrez Gene: 283431](#)Human

[SwissProt: Q86XJ1](#)Human

[Unigene: 20575](#)Human

Important Note:

This product as supplied is intended for research use only, not for use in human, therapeutic or diagnostic applications.



Picture:

Paraformaldehyde-fixed, paraffin embedded (Rat skeletal muscle); Antigen retrieval by boiling in sodium citrate buffer (pH6.0) for 15min; Block endogenous peroxidase by 3% hydrogen peroxide for 20 minutes; Blocking buffer (normal goat serum) at 37°C for 30min; Antibody incubation with (GAS2L3) Polyclonal Antibody, Unconjugated (SL23297R) at 1:400 overnight at 4°C, followed by operating according to SP Kit(Rabbit) (sp-0023) instructions and DAB staining.