



## Rabbit Anti-Semaphorin 3F antibody

SL23306R

<b>Product Name:</b>	Semaphorin 3F
<b>Chinese Name:</b>	臂板蛋白3F抗体
<b>Alias:</b>	Semaphorin-3F; Semaphorin3F; Sema III/F; Sema IV; sema3F; SemaIII/F; SemaIV; Semaphorin IV; SemaphorinIV; SEM3F HUMAN.
<b>Organism Species:</b>	Rabbit
<b>Clonality:</b>	Polyclonal
<b>React Species:</b>	Human,Mouse,Rat,Chicken,Dog,Pig,Cow,Rabbit,Sheep,
<b>Applications:</b>	WB=1:500-2000ELISA=1:500-1000 not yet tested in other applications. optimal dilutions/concentrations should be determined by the end user.
<b>Molecular weight:</b>	88kDa
<b>Cellular localization:</b>	Secretory protein
<b>Form:</b>	Lyophilized or Liquid
<b>Concentration:</b>	1mg/ml
<b>immunogen:</b>	KLH conjugated synthetic peptide derived from human Sema3F:201-300/785
<b>Lsotype:</b>	IgG
<b>Purification:</b>	affinity purified by Protein A
<b>Storage Buffer:</b>	0.01M TBS(pH7.4) with 1% BSA, 0.03% Proclin300 and 50% Glycerol.
<b>Storage:</b>	Store at -20 °C for one year. Avoid repeated freeze/thaw cycles. The lyophilized antibody is stable at room temperature for at least one month and for greater than a year when kept at -20°C. When reconstituted in sterile pH 7.4 0.01M PBS or diluent of antibody the antibody is stable for at least two weeks at 2-4 °C.
<b>PubMed:</b>	<a href="#">PubMed</a>
<b>Product Detail:</b>	The semaphorins are a family of proteins that are involved in signaling. All the family members have a secretion signal, a 500-amino acid sema domain, and 16 conserved cysteine residues(Kolodkin et al., 1993 [PubMed 8269517]). Sequence comparisons have grouped the secreted semaphorins into 3 general classes, all of which also have an immunoglobulin domain. The semaphorin III family, consisting of human semaphorin III (SEMA3A; MIM 603961), chicken collapsin, and mouse semaphorins A, D, and E, all have a basic domain at the C terminus. Chicken collapsin contributes to path finding

by axons during development by inhibiting extension of growth cones (Luo et al., 1993 [PubMed 8402908]) through an interaction with a collapsin response mediator protein of relative molecular mass 62K (CRMP62) (Goshima et al., 1995 [PubMed7637782]), a putative homolog of an axonal guidance associated UNC33 gene product (MIM 601168). SEMA3F is a secreted member of the semaphorin III family.

**Function:**

May play a role in cell motility and cell adhesion.

**Subunit:**

Belongs to the semaphorin family. Contains 1 Ig-like C2-type (immunoglobulin-like) domain. Contains 1 Sema domain.

**Subcellular Location:**

Secreted.

**Tissue Specificity:**

Expressed abundantly but differentially in a variety of neural and nonneural tissues. There is high expression in mammary gland, kidney, fetal brain, and lung and lower expression in heart and liver.

**SWISS:**

Q13275

**Gene ID:**

6405

**Database links:**

[Entrez Gene: 6405](#)Human

[Entrez Gene: 20350](#)Mouse

[Entrez Gene: 315996](#)Rat

[Omim: 601124](#)Human

[SwissProt: Q13275](#)Human

[SwissProt: O88632](#)Mouse

[Unigene: 32981](#)Human

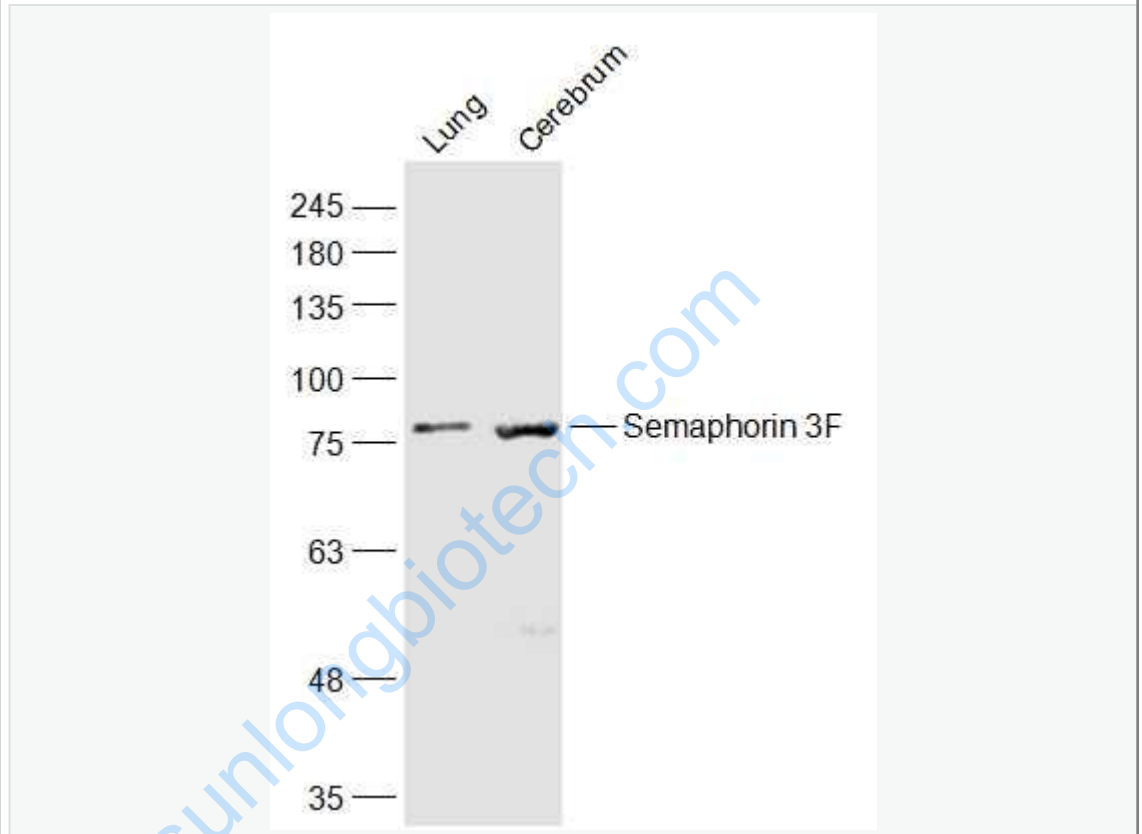
[Unigene: 12903](#)Mouse

[Unigene: 205616](#)Rat

**Important Note:**

This product as supplied is intended for research use only, not for use in human, therapeutic or diagnostic applications.

**Picture:**



Sample:

Lung (Mouse) Lysate at 40 ug

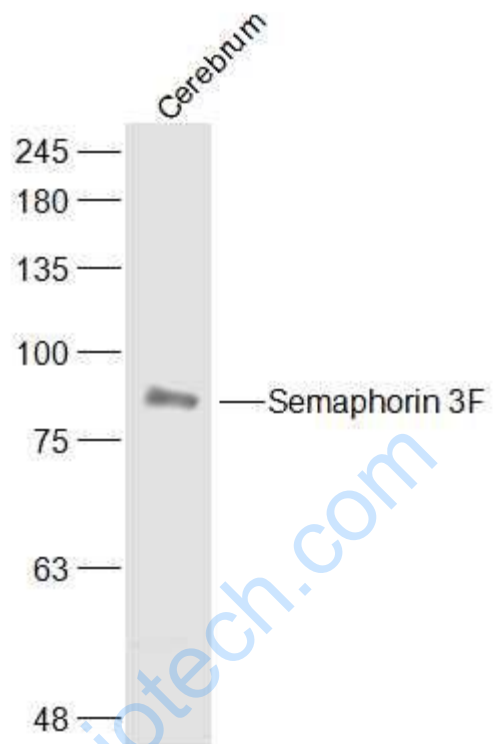
Cerebrum (Mouse) Lysate at 40 ug

Primary: Anti-Semaphorin 3F (SL23306R) at 1/1000 dilution

Secondary: IRDye800CW Goat Anti-Rabbit IgG at 1/20000 dilution

Predicted band size: 88 kD

Observed band size: 88 kD



Sample:

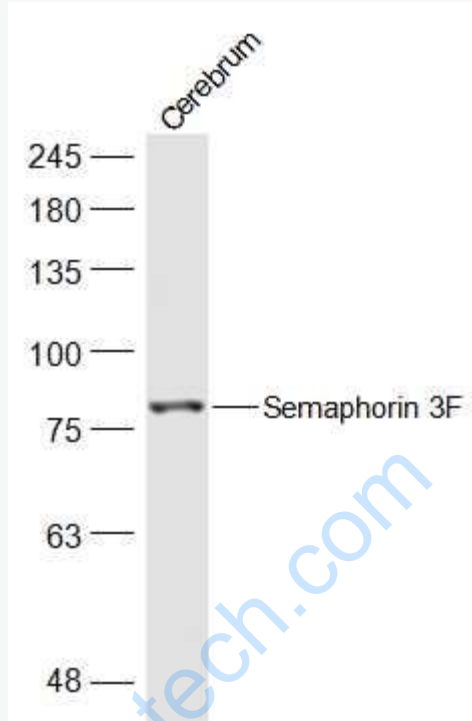
Cerebrum(Mouse) Cell Lysate at 40 ug

Primary: Anti-Semaphorin 3F (SL23306R) at 1/300 dilution

Secondary: IRDye800CW Goat Anti-Rabbit IgG at 1/20000 dilution

Predicted band size: 88 kD

Observed band size: 88 kD



Sample:

Cerebrum (Mouse) Lysate at 40 ug

Primary: Anti-Semaphorin 3F (SL23306R) at 1/500 dilution

Secondary: IRDye800CW Goat Anti-Rabbit IgG at 1/20000 dilution

Predicted band size: 88 kD

Observed band size: 88 kD