



## Rabbit Anti-FITM2 antibody

SL23312R

<b>Product Name:</b>	FITM2
<b>Chinese Name:</b>	FITM2蛋白抗体
<b>Alias:</b>	C20orf142; dJ881L22.2; Fat inducing transcript 2; Fat storage-inducing transmembrane protein 2; Fat-inducing protein 2; Fit2; fitm2; FITM2 HUMAN.
<b>Organism Species:</b>	Rabbit
<b>Clonality:</b>	Polyclonal
<b>React Species:</b>	Human,Mouse,Rat,Dog,Pig,Cow,Sheep,
<b>Applications:</b>	WB=1:500-2000ELISA=1:500-1000 not yet tested in other applications. optimal dilutions/concentrations should be determined by the end user.
<b>Molecular weight:</b>	30kDa
<b>Cellular localization:</b>	cytoplasmic
<b>Form:</b>	Lyophilized or Liquid
<b>Concentration:</b>	1mg/ml
<b>immunogen:</b>	KLH conjugated synthetic peptide derived from human FITM2:1-100/262<Extracellular>
<b>Lsotype:</b>	IgG
<b>Purification:</b>	affinity purified by Protein A
<b>Storage Buffer:</b>	0.01M TBS(pH7.4) with 1% BSA, 0.03% Proclin300 and 50% Glycerol.
<b>Storage:</b>	Store at -20 °C for one year. Avoid repeated freeze/thaw cycles. The lyophilized antibody is stable at room temperature for at least one month and for greater than a year when kept at -20°C. When reconstituted in sterile pH 7.4 0.01M PBS or diluent of antibody the antibody is stable for at least two weeks at 2-4 °C.
<b>PubMed:</b>	<a href="#">PubMed</a>
<b>Product Detail:</b>	<p>FIT2 belongs to an evolutionarily conserved family of proteins involved in fat storage (Kadereit et al., 2008 [PubMed 18160536]).[supplied by OMIM, May 2008]</p> <p><b>Function:</b> Plays an important role in lipid droplet accumulation.</p>

**Subcellular Location:**

Endoplasmic reticulum membrane.

**Tissue Specificity:**

Plays an important role in lipid droplet accumulation.

**Similarity:**

Belongs to the FIT family.

**SWISS:**

Q8N6M3

**Gene ID:**

128486

**Database links:**

[Entrez Gene: 128486](#)Human

[Omim: 612029](#)Human

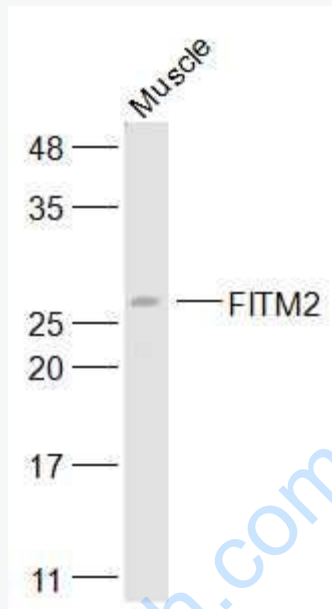
[SwissProt: Q8N6M3](#)Human

[Unigene: 632269](#)Human

**Important Note:**

This product as supplied is intended for research use only, not for use in human, therapeutic or diagnostic applications.

Picture:



Sample:

Muscle (Mouse) Lysate at 40 ug

Primary: Anti-FITM2 (SL23312R) at 1/300 dilution

Secondary: IRDye800CW Goat Anti-Rabbit IgG at 1/20000 dilution

Predicted band size: 30 kD

Observed band size: 28 kD