



Rabbit Anti-GCLM antibody

SL23360R

Product Name:	GCLM
Chinese Name:	γ 谷氨酰半胱氨酸连接酶调节亚基
Alias:	Glutamate-Cysteine Ligase Modifier Subunit; Gamma-Glutamylcysteine Synthetase Regulatory Subunit; Glutamate--Cysteine Ligase Modifier Subunit; Gamma-ECS Regulatory Subunit; GCS Light Chain; GLCLR; Glutamate-Cysteine Ligase (Gamma-Glutamylcysteine Synthetase), Regulatory (30.8kD); Glutamate-Cysteine Ligase Modifier Subunit Delta2 Alternative Splicing; Glutamate--Cysteine Ligase Regulatory Subunit; Glutamate-Cysteine Ligase Regulatory Protein; Glutamate-Cysteine Ligase, Modifier Subunit; Gamma-Glutamylcysteine Synthetase; GSC Light Chain; GSH0_HUMAN;
Organism Species:	Rabbit
Clonality:	Polyclonal
React Species:	Human,Mouse,Rat,
Applications:	IHC-P=1:400-800IHC-F=1:400-800ICC=1:100-500IF=1:100-500 (Paraffin sections need antigen repair) not yet tested in other applications. optimal dilutions/concentrations should be determined by the end user.
Molecular weight:	31kDa
Cellular localization:	cytoplasmic
Form:	Lyophilized or Liquid
Concentration:	1mg/ml
immunogen:	KLH conjugated synthetic peptide derived from human GCLM:121-220/274
Lsotype:	IgG
Purification:	affinity purified by Protein A
Storage Buffer:	0.01M TBS(pH7.4) with 1% BSA, 0.03% Proclin300 and 50% Glycerol.
Storage:	Store at -20 °C for one year. Avoid repeated freeze/thaw cycles. The lyophilized antibody is stable at room temperature for at least one month and for greater than a year when kept at -20°C. When reconstituted in sterile pH 7.4 0.01M PBS or diluent of antibody the antibody is stable for at least two weeks at 2-4 °C.
PubMed:	PubMed

Glutamate-cysteine ligase, also known as gamma-glutamylcysteine synthetase, is the first rate limiting enzyme of glutathione synthesis. The enzyme consists of two subunits, a heavy catalytic subunit and a light regulatory subunit. Gamma glutamylcysteine synthetase deficiency has been implicated in some forms of hemolytic anemia. Alternative splicing results in multiple transcript variants encoding different isoforms. [provided by RefSeq, Apr 2015]

Function:

This protein is involved in step 1 of the subpathway that synthesizes glutathione from L-cysteine and L-glutamate.

Subunit:

Heterodimer of a catalytic heavy chain and a regulatory light chain.

Subcellular Location:

Cytosol

Tissue Specificity:

In all tissues examined. Highest levels in skeletal muscle.

Similarity:

Belongs to the aldo/keto reductase family. Glutamate--cysteine ligase light chain subfamily.

Product Detail:

SWISS:

P48507

Gene ID:

2730

Database links:

[Entrez Gene: 2730](#)Human

[Entrez Gene: 14630](#)Mouse

[Entrez Gene: 29739](#)Rat

[Omim: 601176](#)Human

[SwissProt: P48507](#)Human

[SwissProt: O09172](#)Mouse

[SwissProt: P48508](#)Rat

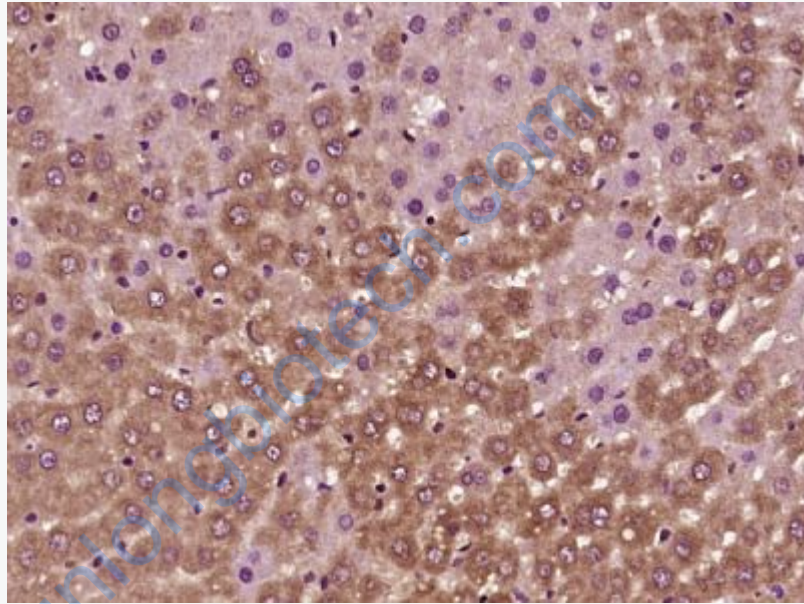
[Unigene: 315562](#)Human

[Unigene: 292676](#)Mouse

[Unigene: 2460](#)Rat

Important Note:

This product as supplied is intended for research use only, not for use in human, therapeutic or diagnostic applications.



Picture:

Paraformaldehyde-fixed, paraffin embedded (rat liver tissue); Antigen retrieval by boiling in sodium citrate buffer (pH6.0) for 15min; Block endogenous peroxidase by 3% hydrogen peroxide for 20 minutes; Blocking buffer (normal goat serum) at 37°C for 30min; Antibody incubation with (GCLM) Polyclonal Antibody, Unconjugated (SL23360R) at 1:400 overnight at 4°C, followed by operating according to SP Kit(Rabbit) (sp-0023) instructions and DAB staining.