



## Rabbit Anti-GCLM antibody

SL23361R

<b>Product Name:</b>	GCLM
<b>Chinese Name:</b>	γ 谷氨酰半胱氨酸连接酶调节亚基抗体
<b>Alias:</b>	Glutamate-Cysteine Ligase Modifier Subunit; Gamma-Glutamylcysteine Synthetase Regulatory Subunit; Glutamate--Cysteine Ligase Modifier Subunit; Gamma-ECS Regulatory Subunit; GCS Light Chain; GLCLR; Glutamate-Cysteine Ligase (Gamma-Glutamylcysteine Synthetase), Regulatory (30.8kD); Glutamate-Cysteine Ligase Modifier Subunit Delta2 Alternative Splicing; Glutamate--Cysteine Ligase Regulatory Subunit; Glutamate-Cysteine Ligase Regulatory Protein; Glutamate-Cysteine Ligase, Modifier Subunit; Gamma-Glutamylcysteine Synthetase; GSC Light Chain; GSH0 HUMAN;
<b>Organism Species:</b>	Rabbit
<b>Clonality:</b>	Polyclonal
<b>React Species:</b>	Human,Mouse,Rat,Dog,Pig,Cow,Horse,Rabbit,Sheep,
<b>Applications:</b>	WB=1:500-2000ELISA=1:500-1000IHC-P=1:400-800IHC-F=1:400-800ICC=1:100-500IF=1:100-500 (Paraffin sections need antigen repair) not yet tested in other applications. optimal dilutions/concentrations should be determined by the end user.
<b>Molecular weight:</b>	31kDa
<b>Cellular localization:</b>	cytoplasmic
<b>Form:</b>	Lyophilized or Liquid
<b>Concentration:</b>	1mg/ml
<b>immunogen:</b>	KLH conjugated synthetic peptide derived from human GCLM:31-120/274
<b>Lsotype:</b>	IgG
<b>Purification:</b>	affinity purified by Protein A
<b>Storage Buffer:</b>	0.01M TBS(pH7.4) with 1% BSA, 0.03% Proclin300 and 50% Glycerol.
<b>Storage:</b>	Store at -20 °C for one year. Avoid repeated freeze/thaw cycles. The lyophilized antibody is stable at room temperature for at least one month and for greater than a year when kept at -20°C. When reconstituted in sterile pH 7.4 0.01M PBS or diluent of antibody the antibody is stable for at least two weeks at 2-4 °C.
<b>PubMed:</b>	<a href="#">PubMed</a>

Glutamate-cysteine ligase, also known as gamma-glutamylcysteine synthetase, is the first rate limiting enzyme of glutathione synthesis. The enzyme consists of two subunits, a heavy catalytic subunit and a light regulatory subunit. Gamma glutamylcysteine synthetase deficiency has been implicated in some forms of hemolytic anemia. Alternative splicing results in multiple transcript variants encoding different isoforms. [provided by RefSeq, Apr 2015]

**Function:**

This protein is involved in step 1 of the subpathway that synthesizes glutathione from L-cysteine and L-glutamate.

**Subunit:**

Heterodimer of a catalytic heavy chain and a regulatory light chain.

**Subcellular Location:**

Cytosol

**Tissue Specificity:**

In all tissues examined. Highest levels in skeletal muscle.

**Similarity:**

Belongs to the aldo/keto reductase family. Glutamate--cysteine ligase light chain subfamily.

**Product Detail:**

**SWISS:**

P48507

**Gene ID:**

2730

**Database links:**

[Entrez Gene: 2730](#)Human

[Entrez Gene: 14630](#)Mouse

[Entrez Gene: 29739](#)Rat

[Omim: 601176](#)Human

[SwissProt: P48507](#)Human

[SwissProt: O09172](#)Mouse

[SwissProt: P48508](#)Rat

[Unigene: 315562](#)Human

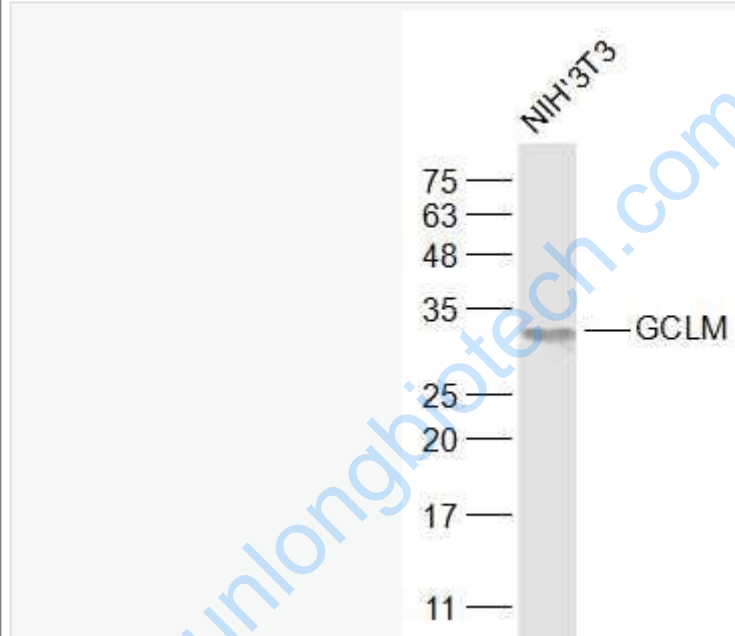
[Unigene: 292676](#)Mouse

[Unigene: 2460](#)Rat

**Important Note:**

This product as supplied is intended for research use only, not for use in human, therapeutic or diagnostic applications.

**Picture:**



Sample:

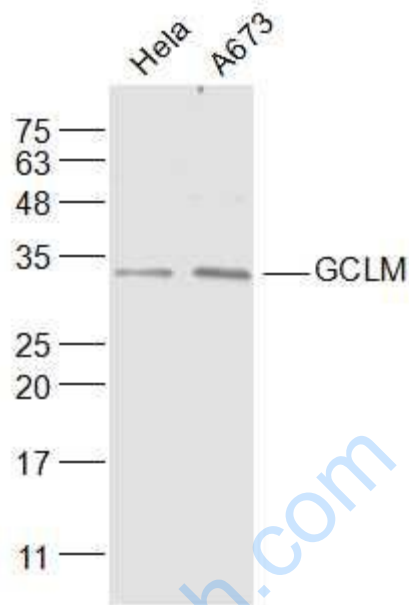
NIH/3T3(Mouse) Cell Lysate at 30 ug

Primary: Anti-GCLM? (SL23361R) at 1/1000 dilution

Secondary: IRDye800CW Goat Anti-Rabbit IgG at 1/20000 dilution

Predicted band size: 31 kD

Observed band size: 31 kD



Sample:

HeLa(Human) Cell Lysate at 30 ug

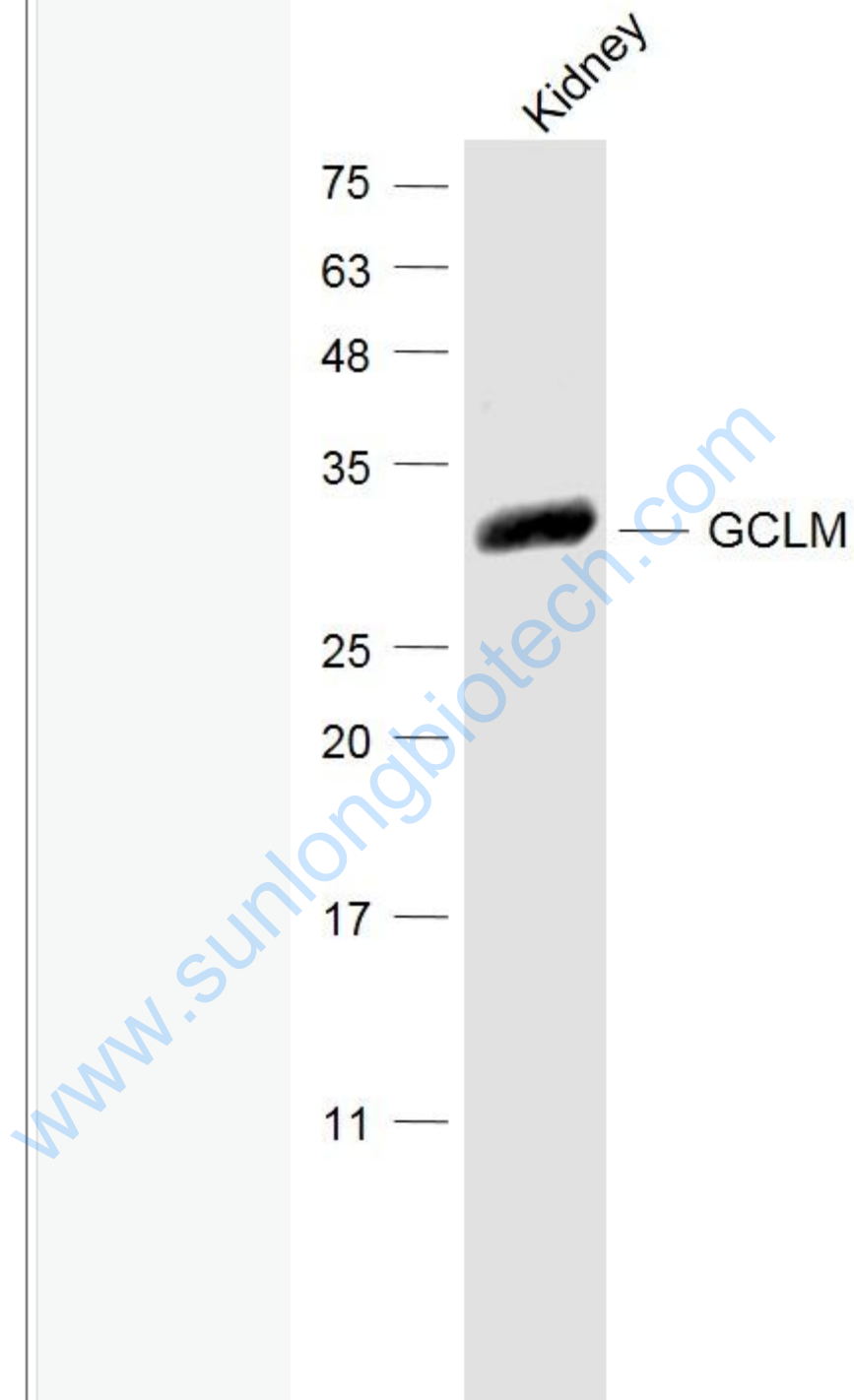
A673(Human) Cell Lysate at 30 ug

Primary: Anti-GCLM? (SL23361R) at 1/1000 dilution

Secondary: IRDye800CW Goat Anti-Rabbit IgG at 1/20000 dilution

Predicted band size: 31 kD

Observed band size: 31 kD



Sample:

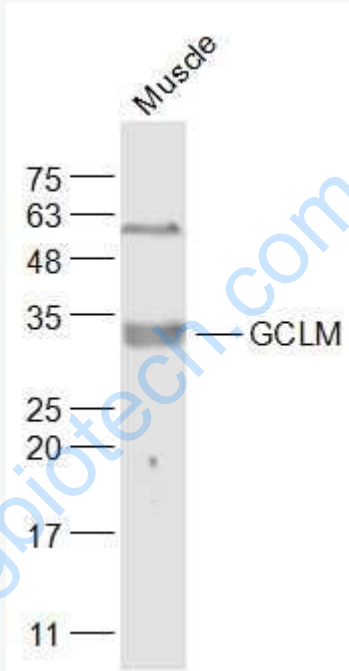
Kidney (Mouse) Lysate at 40 ug

Primary: Anti-GCLM (SL23361R) at 1/1000 dilution

Secondary: IRDye800CW Goat Anti-Rabbit IgG at 1/20000 dilution

Predicted band size: 31 kD

Observed band size: 31 kD



Sample:

Muscle (Mouse) Lysate at 40 ug

Primary: Anti-GCLM? (SL23361R) at 1/1000 dilution

Secondary: IRDye800CW Goat Anti-Rabbit IgG at 1/20000 dilution

Predicted band size: 31 kD

Observed band size: 31 kD