



## Rabbit Anti-Glutaredoxin 1 antibody

SL23373R

<b>Product Name:</b>	Glutaredoxin 1
<b>Chinese Name:</b>	谷氧还蛋白/巯基转移酶抗体
<b>Alias:</b>	Glx; Glrx1; GLRX1_HUMAN; Glutaredoxin; Glutaredoxin-1; Glutaredoxin1; Grx 1; Grx; Grx1; Thioltransferase 1; Thioltransferase; Thioltransferase-1; Thioltransferase1; TTase; TTase 1; TTase-1; TTase1.
<b>Organism Species:</b>	Rabbit
<b>Clonality:</b>	Polyclonal
<b>React Species:</b>	Human,Mouse,Rat,
<b>Applications:</b>	ELISA=1:500-1000IHC-P=1:400-800IHC-F=1:400-800ICC=1:100-500IF=1:100-500 (Paraffin sections need antigen repair) not yet tested in other applications. optimal dilutions/concentrations should be determined by the end user.
<b>Molecular weight:</b>	12kDa
<b>Cellular localization:</b>	cytoplasmic
<b>Form:</b>	Lyophilized or Liquid
<b>Concentration:</b>	1mg/ml
<b>immunogen:</b>	KLH conjugated synthetic peptide derived from human Glutaredoxin 1:21-80/106
<b>Lsotype:</b>	IgG
<b>Purification:</b>	affinity purified by Protein A
<b>Storage Buffer:</b>	0.01M TBS(pH7.4) with 1% BSA, 0.03% Proclin300 and 50% Glycerol.
<b>Storage:</b>	Store at -20 °C for one year. Avoid repeated freeze/thaw cycles. The lyophilized antibody is stable at room temperature for at least one month and for greater than a year when kept at -20°C. When reconstituted in sterile pH 7.4 0.01M PBS or diluent of antibody the antibody is stable for at least two weeks at 2-4 °C.
<b>PubMed:</b>	<a href="#">PubMed</a>
<b>Product Detail:</b>	This gene encodes a member of the glutaredoxin family. The encoded protein is a cytoplasmic enzyme catalyzing the reversible reduction of glutathione-protein mixed disulfides. This enzyme highly contributes to the antioxidant defense system. It is crucial for several signalling pathways by controlling the S-glutathionylation status of signalling mediators. It is involved in beta-amyloid toxicity and Alzheimer's disease. Multiple

alternatively spliced transcript variants encoding the same protein have been identified. [provided by RefSeq, Aug 2011].

**Function:**

Has a glutathione-disulfide oxidoreductase activity in the presence of NADPH and glutathione reductase. Reduces low molecular weight disulfides and proteins.

**Subcellular Location:**

Cytoplasm.

**Similarity:**

Belongs to the glutaredoxin family.  
Contains 1 glutaredoxin domain.

**SWISS:**

P35754

**Gene ID:**

2745

**Database links:**

[Entrez Gene: 515416](#)Cow

[Entrez Gene: 2745](#)Human

[Entrez Gene: 93692](#)Mouse

[Entrez Gene: 397463](#)Pig

[Entrez Gene: 64045](#)Rat

[Omim: 600443](#)Human

[SwissProt: P10575](#)Cow

[SwissProt: P35754](#)Human

[SwissProt: Q9QUH0](#)Mouse

[SwissProt: P12309](#)Pig

[SwissProt: P12864](#)Rabbit

[SwissProt: Q9ESH6](#)Rat

[Unigene: 28988](#)Human

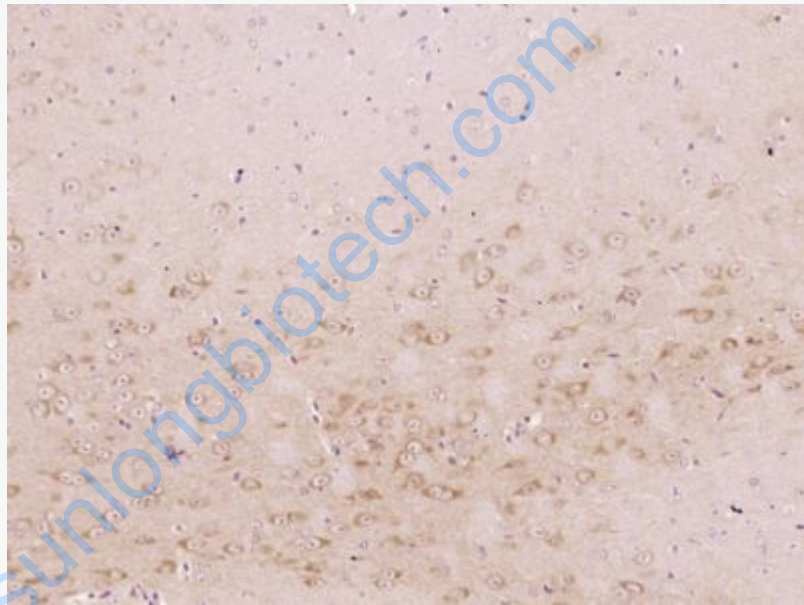
[Unigene: 712696](#)Human

[Unigene: 25844](#)Mouse

[Unigene: 1484](#)Rat

**Important Note:**

This product as supplied is intended for research use only, not for use in human, therapeutic or diagnostic applications.



**Picture:**

Paraformaldehyde-fixed, paraffin embedded (Mouse brain); Antigen retrieval by boiling in sodium citrate buffer (pH6.0) for 15min; Block endogenous peroxidase by 3% hydrogen peroxide for 20 minutes; Blocking buffer (normal goat serum) at 37°C for 30min; Antibody incubation with (Glutaredoxin 1) Polyclonal Antibody, Unconjugated (SL23373R) at 1:400 overnight at 4°C, followed by operating according to SP Kit(Rabbit) (sp-0023) instructions and DAB staining.