



Rabbit Anti-Glutaredoxin 1 antibody

SL23374R

Product Name:	Glutaredoxin 1
Chinese Name:	谷氧还蛋白/巯基转移酶抗体
Alias:	Glx; Glrx1; GLRX1_HUMAN; Glutaredoxin; Glutaredoxin-1; Glutaredoxin1; Grx 1; Grx; Grx1; Thioltransferase 1; Thioltransferase; Thioltransferase-1; Thioltransferase1; TTase; TTase 1; TTase-1; TTase1.
Organism Species:	Rabbit
Clonality:	Polyclonal
React Species:	Human,Mouse,Rat,Cow,Horse,
Applications:	WB=1:500-2000ELISA=1:500-1000IHC-P=1:400-800IHC-F=1:400-800ICC=1:100-500IF=1:100-500 (Paraffin sections need antigen repair) not yet tested in other applications. optimal dilutions/concentrations should be determined by the end user.
Molecular weight:	12kDa
Cellular localization:	cytoplasmic
Form:	Lyophilized or Liquid
Concentration:	1mg/ml
immunogen:	KLH conjugated synthetic peptide derived from human Glutaredoxin 1:41-106/106
Lsotype:	IgG
Purification:	affinity purified by Protein A
Storage Buffer:	0.01M TBS(pH7.4) with 1% BSA, 0.03% Proclin300 and 50% Glycerol.
Storage:	Store at -20 °C for one year. Avoid repeated freeze/thaw cycles. The lyophilized antibody is stable at room temperature for at least one month and for greater than a year when kept at -20°C. When reconstituted in sterile pH 7.4 0.01M PBS or diluent of antibody the antibody is stable for at least two weeks at 2-4 °C.
PubMed:	PubMed
Product Detail:	This gene encodes a member of the glutaredoxin family. The encoded protein is a cytoplasmic enzyme catalyzing the reversible reduction of glutathione-protein mixed disulfides. This enzyme highly contributes to the antioxidant defense system. It is crucial for several signalling pathways by controlling the S-glutathionylation status of signalling mediators. It is involved in beta-amyloid toxicity and Alzheimer's disease. Multiple

alternatively spliced transcript variants encoding the same protein have been identified. [provided by RefSeq, Aug 2011].

Function:

Has a glutathione-disulfide oxidoreductase activity in the presence of NADPH and glutathione reductase. Reduces low molecular weight disulfides and proteins.

Subcellular Location:

Cytoplasm.

Similarity:

Belongs to the glutaredoxin family.
Contains 1 glutaredoxin domain.

SWISS:

P35754

Gene ID:

2745

Database links:

[Entrez Gene: 515416](#)Cow

[Entrez Gene: 2745](#)Human

[Entrez Gene: 93692](#)Mouse

[Entrez Gene: 397463](#)Pig

[Entrez Gene: 64045](#)Rat

[Omim: 600443](#)Human

[SwissProt: P10575](#)Cow

[SwissProt: P35754](#)Human

[SwissProt: Q9QUH0](#)Mouse

[SwissProt: P12309](#)Pig

[SwissProt: P12864](#)Rabbit

[SwissProt: Q9ESH6](#)Rat

[Unigene: 28988](#)Human

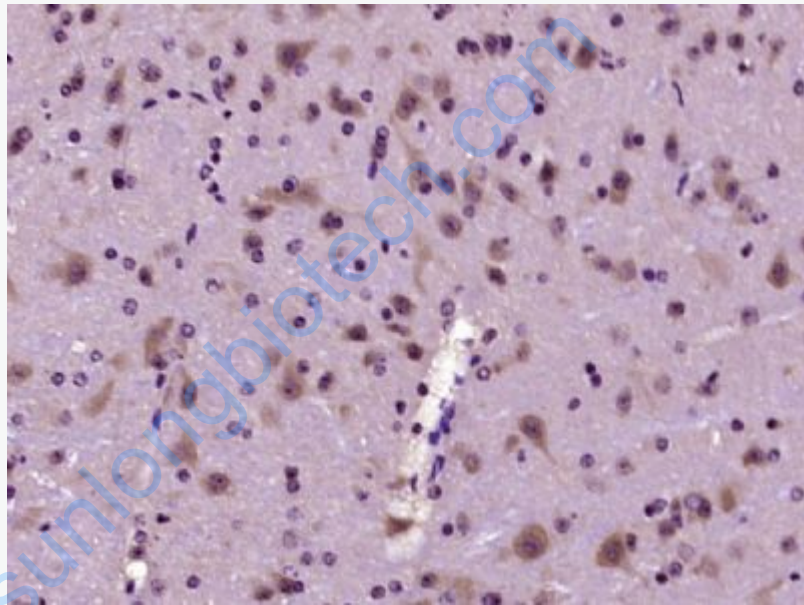
[Unigene: 712696](#)Human

[Unigene: 25844](#)Mouse

[Unigene: 1484](#)Rat

Important Note:

This product as supplied is intended for research use only, not for use in human, therapeutic or diagnostic applications.



Picture:

Paraformaldehyde-fixed, paraffin embedded (mouse brain tissue); Antigen retrieval by boiling in sodium citrate buffer (pH6.0) for 15min; Block endogenous peroxidase by 3% hydrogen peroxide for 20 minutes; Blocking buffer (normal goat serum) at 37°C for 30min; Antibody incubation with (Glutaredoxin 1) Polyclonal Antibody, Unconjugated (SL23374R) at 1:400 overnight at 4°C, followed by operating according to SP Kit(Rabbit) (sp-0023) instructions and DAB staining.