



Rabbit Anti-TREM1 antibody

SL23400R

Product Name:	TREM1
Chinese Name:	髓系细胞触发受体1抗体
Alias:	TREM 1; TREM-1; Triggering receptor expressed on monocytes 1; Triggering receptor expressed on myeloid cells 1; Triggering receptor TREM 1; Triggering receptor TREM1; Triggering-receptor TREM 1; Triggering-receptor TREM-1; Triggering-receptor TREM1; TREM1_MOUSE; CD354.
Organism Species:	Rabbit
Clonality:	Polyclonal
React Species:	Human,Mouse,Rat,
Applications:	WB=1:500-2000IHC-P=1:400-800IHC-F=1:400-800Flow-Cyt=1ug/TestICC=1:100-500IF=1:100-500 (Paraffin sections need antigen repair) not yet tested in other applications. optimal dilutions/concentrations should be determined by the end user.
Molecular weight:	24kDa
Cellular localization:	The cell membraneSecretory protein
Form:	Lyophilized or Liquid
Concentration:	1mg/ml
immunogen:	KLH conjugated synthetic peptide derived from mouse TREM1:1-100/230<Extracellular>
Lsotype:	IgG
Purification:	affinity purified by Protein A
Storage Buffer:	0.01M TBS(pH7.4) with 1% BSA, 0.03% Proclin300 and 50% Glycerol.
Storage:	Store at -20 °C for one year. Avoid repeated freeze/thaw cycles. The lyophilized antibody is stable at room temperature for at least one month and for greater than a year when kept at -20°C. When reconstituted in sterile pH 7.4 0.01M PBS or diluent of antibody the antibody is stable for at least two weeks at 2-4 °C.
PubMed:	PubMed
Product Detail:	This gene encodes a receptor belonging to the Ig superfamily that is expressed on myeloid cells. This protein amplifies neutrophil and monocyte-mediated inflammatory responses triggered by bacterial and fungal infections by stimulating release of pro-

inflammatory chemokines and cytokines, as well as increased surface expression of cell activation markers. Alternatively spliced transcript variants encoding different isoforms have been noted for this gene.[provided by RefSeq, Jun 2011].

Function:

Stimulates neutrophil and monocyte-mediated inflammatory responses. Triggers release of pro-inflammatory chemokines and cytokines, as well as increased surface expression of cell activation markers. Amplifier of inflammatory responses that are triggered by bacterial and fungal infections and is a crucial mediator of septic shock (By similarity).

Subunit:

Interacts with TYROBP/DAP12.

Subcellular Location:

Isoform 1: Cell membrane; Single-pass type I membrane protein (Potential). Isoform 2: Secreted (Potential).

Tissue Specificity:

Highly expressed in adult liver, lung and spleen than in corresponding fetal tissue. Also expressed in the lymph node, placenta, spinal cord and heart tissues. Expression is more elevated in peripheral blood leukocytes than in the bone marrow and in normal cells than malignant cells. Expressed at low levels in the early development of the hematopoietic system and in the promonocytic stage and at high levels in mature monocytes. Strongly expressed in acute inflammatory lesions caused by bacteria and fungi. Isoform 2 was detected in the lung, liver and mature monocytes.

Similarity:

Contains 1 Ig-like V-type (immunoglobulin-like) domain.

SWISS:

Q9JKE2

Gene ID:

58217

Database links:

[Entrez Gene: 54210](#)Human

[Entrez Gene: 58217](#)Mouse

[Entrez Gene: 301229](#)Rat

[Olim: 605085](#)Human

[SwissProt: Q9NP99](#)Human

[SwissProt: Q9JKE2](#)Mouse

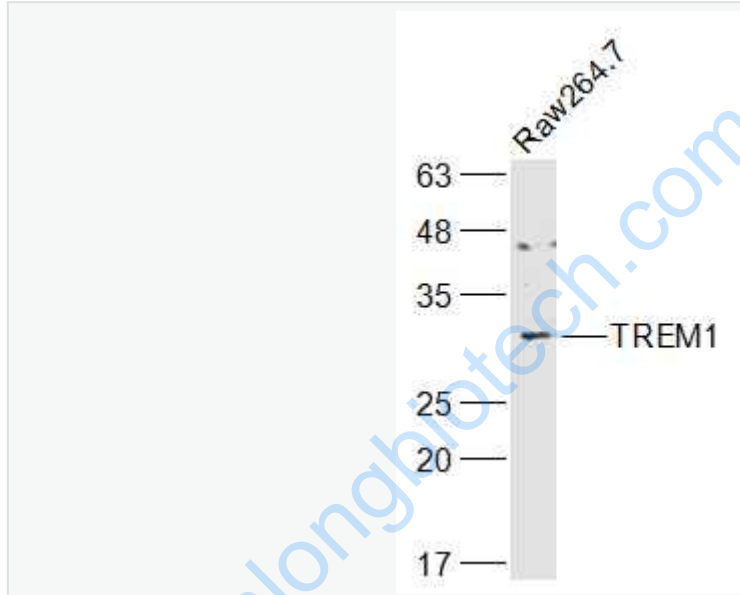
[Unigene: 283022](#)Human

[Unigene: 248352](#)Mouse

Important Note:

This product as supplied is intended for research use only, not for use in human, therapeutic or diagnostic applications.

Picture:



Sample:

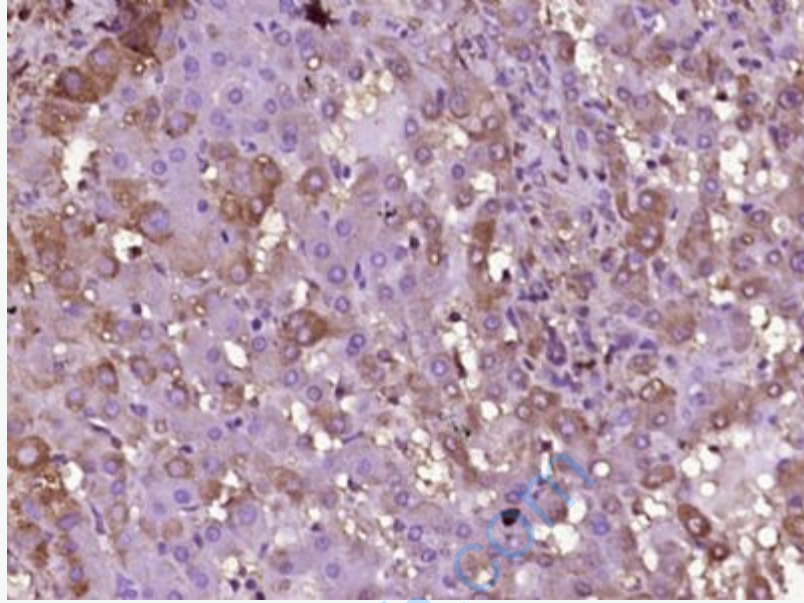
Raw264.7(Mouse) Cell Lysate at 30 ug

Primary: Anti-TREM1 (SL23400R) at 1/1000 dilution

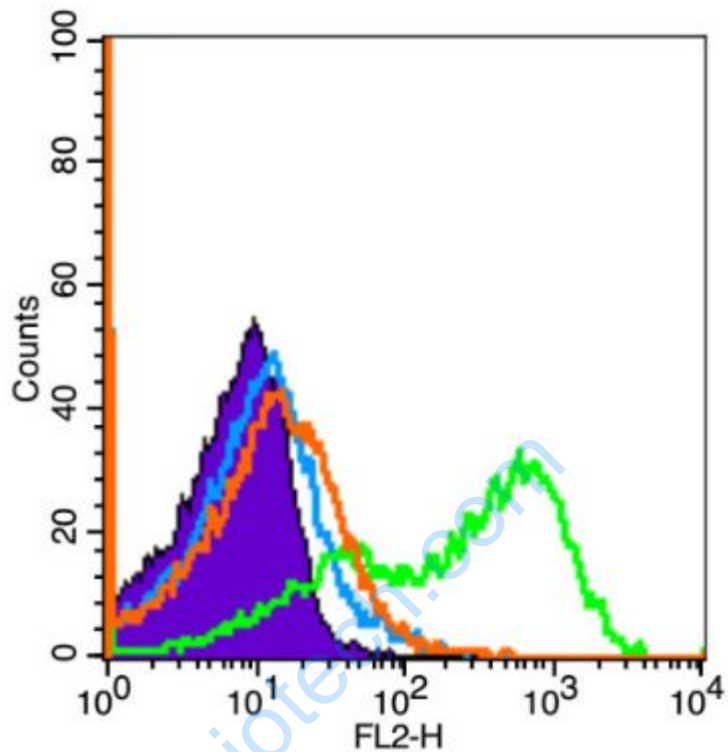
Secondary: IRDye800CW Goat Anti-Rabbit IgG at 1/20000 dilution

Predicted band size: 24 kD

Observed band size: 29 kD



Paraformaldehyde-fixed, paraffin embedded (Human liver); Antigen retrieval by boiling in sodium citrate buffer (pH6.0) for 15min; Block endogenous peroxidase by 3% hydrogen peroxide for 20 minutes; Blocking buffer (normal goat serum) at 37°C for 30min; Antibody incubation with (TREM1) Polyclonal Antibody, Unconjugated (SL23400R) at 1:400 overnight at 4°C, followed by operating according to SP Kit(Rabbit) (sp-0023) instructions and DAB staining.



Blank control (black line): Mouse spleen(Black).

Primary Antibody (green line): Rabbit Anti-TREM1 antibody (SL23400R)

Dilution: $1\mu\text{g} / 10^6$ cells;

Isotype Control Antibody (orange line): Rabbit IgG .

Secondary Antibody (white blue line): Goat anti-rabbit IgG-PE

Dilution: $3\mu\text{g} / \text{test}$.

Protocol

The cells were fixed with 4% paraformaldehyde for 10 min at room temperature.

The cells were then incubated in 5% BSA to block non-specific protein-protein interactions for 30 min at room temperature. Cells stained with Primary Antibody for 30 min at room temperature The secondary antibody used for 40 min at room

	temperature. Acquisition of 10,000 events was performed.
--	--

www.sunlongbiotech.com