



Rabbit Anti-ATP1B1 antibody

SL23415R

Product Name:	ATP1B1
Chinese Name:	钠钾ATP酶蛋白b1抗体
Alias:	beta 1 Sodium Potassium ATPase; Adenosinetriphosphatase; AT1B1_HUMAN; ATP 1B; ATP1B; ATP1B1; ATPase Na ⁺ /K ⁺ transporting beta 1 polypeptide; Atpb 1; ATPBS; Beta 1 subunit of Na(+) K(+) ATPase; Na K ATPase beta 1 polypeptide; Na ⁺ /K ⁺ ATPase beta 1 subunit; Sodium/potassium dependent ATPase beta 1 subunit; Sodium/potassium transporting ATPase beta 1 chain; Sodium/potassium transporting ATPase subunit beta 1; Sodium/potassium-dependent ATPase subunit beta-1; Sodium/potassium-transporting ATPase subunit beta-1.
Organism Species:	Rabbit
Clonality:	Polyclonal
React Species:	Human,
Applications:	WB=1:500-2000ELISA=1:500-1000 not yet tested in other applications. optimal dilutions/concentrations should be determined by the end user.
Molecular weight:	35kDa
Cellular localization:	The cell membrane
Form:	Liquid
Concentration:	1mg/ml
immunogen:	KLH conjugated synthetic peptide derived from human ATP1B1:31-130/303<Extracellular>
Lsotype:	IgG
Purification:	affinity purified by Protein A
Storage Buffer:	0.01M TBS(pH7.4) with 1% BSA, 0.03% Proclin300 and 50% Glycerol.
Storage:	Store at -20 °C for one year. Avoid repeated freeze/thaw cycles. The lyophilized antibody is stable at room temperature for at least one month and for greater than a year when kept at -20°C. When reconstituted in sterile pH 7.4 0.01M PBS or diluent of antibody the antibody is stable for at least two weeks at 2-4 °C.
PubMed:	PubMed
Product Detail:	The protein encoded by this gene belongs to the family of Na ⁺ /K ⁺ and H ⁺ /K ⁺ ATPases

beta chain proteins, and to the subfamily of Na⁺/K⁺ -ATPases. Na⁺/K⁺ -ATPase is an integral membrane protein responsible for establishing and maintaining the electrochemical gradients of Na and K ions across the plasma membrane. These gradients are essential for osmoregulation, for sodium-coupled transport of a variety of organic and inorganic molecules, and for electrical excitability of nerve and muscle. This enzyme is composed of two subunits, a large catalytic subunit (alpha) and a smaller glycoprotein subunit (beta). The beta subunit regulates, through assembly of alpha/beta heterodimers, the number of sodium pumps transported to the plasma membrane. The glycoprotein subunit of Na⁺/K⁺ -ATPase is encoded by multiple genes. This gene encodes a beta 1 subunit. Alternatively spliced transcript variants encoding different isoforms have been described, but their biological validity is not known. [provided by RefSeq, Mar 2010]

Function:

This is the non-catalytic component of the active enzyme, which catalyzes the hydrolysis of ATP coupled with the exchange of Na⁺ and K⁺ ions across the plasma membrane. The beta subunit regulates, through assembly of alpha/beta heterodimers, the number of sodium pumps transported to the plasma membrane. Involved in cell adhesion and establishing epithelial cell polarity.

Subunit:

Composed of three subunits: alpha (catalytic), beta and gamma. Interacts with NKAIN1, NKAIN2 and NKAIN4 (By similarity). Interacts with MLC1 (PubMed:22328087). Part of a complex containing MLC1, TRPV4, AQP4 and HEPACAM (PubMed:22328087). Interacts with KIRREL3 (PubMed:25902260). Interacts with OBSCN (via protein kinase domain 1) (By similarity).

Subcellular Location:

Cell membrane; Single-pass type II membrane protein

Tissue Specificity:

Found in most tissues.

Similarity:

Belongs to the X(+)/potassium ATPases subunit beta family.

SWISS:

P05026

Gene ID:

481

Database links:

[Entrez Gene: 481](#) Human

[Entrez Gene: 11931](#)Mouse

[Entrez Gene: 396898](#)Pig

[Entrez Gene: 25650](#)Rat

[Omim: 182330](#)Human

[SwissProt: P06583](#)Dog

[SwissProt: Q24046](#)Drosophila melanogaster

[SwissProt: Q9JM72](#)Guinea pig

[SwissProt: P05026](#)Human

[SwissProt: P14094](#)Mouse

[SwissProt: P05027](#)Pig

[SwissProt: Q9TT37](#)Rabbit

[SwissProt: P07340](#)Rat

[SwissProt: P05028](#)Sheep

[Unigene: 4821](#)Drosophila melanogaster

[Unigene: 291196](#)Human

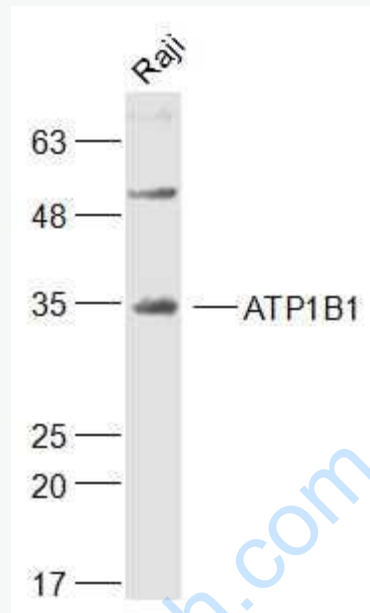
[Unigene: 4550](#)Mouse

[Unigene: 8925](#)Rat

Important Note:

This product as supplied is intended for research use only, not for use in human, therapeutic or diagnostic applications.

Picture:



Sample:

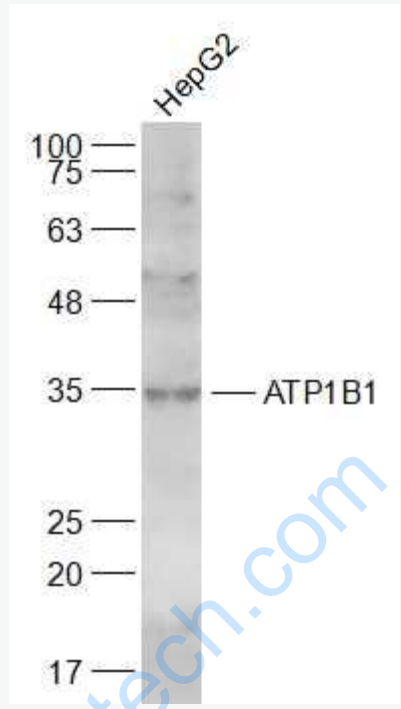
Raji(Human) Cell Lysate at 30 ug

Primary: Anti-ATP1B1 (SL23415R) at 1/1000 dilution

Secondary: IRDye800CW Goat Anti-Rabbit IgG at 1/20000 dilution

Predicted band size: 35 kD

Observed band size: 35 kD



Sample:

HepG2(Human) Cell Lysate at 30 ug

Primary: Anti-ATP1B1 (SL23415R) at 1/1000 dilution

Secondary: IRDye800CW Goat Anti-Rabbit IgG at 1/20000 dilution

Predicted band size: 35 kD

Observed band size: 35 kD