



## Rabbit Anti-Salusin alpha antibody

SL23427R

<b>Product Name:</b>	Salusin alpha
<b>Chinese Name:</b>	Cardiovascular调节肽Salusin- $\alpha$ 抗体
<b>Alias:</b>	Prosalusin precursor; TOR2A; TORP1; Torsin 2A [Precursor]; Torsin family 2 member A; Torsin related protein 1; TOR2A_HUMAN.
<b>Organism Species:</b>	Rabbit
<b>Clonality:</b>	Polyclonal
<b>React Species:</b>	Human,
<b>Applications:</b>	WB=1:500-2000IHC-P=1:400-800IHC-F=1:400-800ICC=1:100-500IF=1:100-500 (Paraffin sections need antigen repair) not yet tested in other applications. optimal dilutions/concentrations should be determined by the end user.
<b>Molecular weight:</b>	33kDa
<b>Cellular localization:</b>	Secretory protein
<b>Form:</b>	Lyophilized or Liquid
<b>Concentration:</b>	1mg/ml
<b>immunogen:</b>	KLH conjugated synthetic peptide derived from human Salusin alpha:181-242/242
<b>Lsotype:</b>	IgG
<b>Purification:</b>	affinity purified by Protein A
<b>Storage Buffer:</b>	0.01M TBS(pH7.4) with 1% BSA, 0.03% Proclin300 and 50% Glycerol.
<b>Storage:</b>	Store at -20 °C for one year. Avoid repeated freeze/thaw cycles. The lyophilized antibody is stable at room temperature for at least one month and for greater than a year when kept at -20°C. When reconstituted in sterile pH 7.4 0.01M PBS or diluent of antibody the antibody is stable for at least two weeks at 2-4 °C.
<b>PubMed:</b>	<a href="#">PubMed</a>
<b>Product Detail:</b>	Salusins are multifunctional bioactive peptides discovered by bioinformatics analyses of a full-length cDNA library. Salusin alpha and salusin beta are related peptides of 28 and 20 amino acids that were recently characterized. These peptides are considered to be biosynthesized from preprosalsin, an alternative-splicing product of the torsion dystonia-related gene (TOR2A), after frameshift reading and digestion at dibasic amino acids. Salusin alpha has recently been shown to be involved in atherosclerosis; it

potently suppresses acyl-CoA:cholesterol acyltransferase-1 which stores cholesterol ester converted from free cholesterol in macrophages, thereby reducing human macrophage foam cell formation.

**Subcellular Location:**

Secreted.

**Tissue Specificity:**

Isoform 1 is expressed ubiquitously, except in cardiac and endothelial tissues.

**Similarity:**

Belongs to the clpA/clpB family. Torsin subfamily.

**SWISS:**

Q5JU69

**Gene ID:**

27433

**Database links:**

[Entrez Gene: 27433](#)Human

[Omim: 608052](#)Human

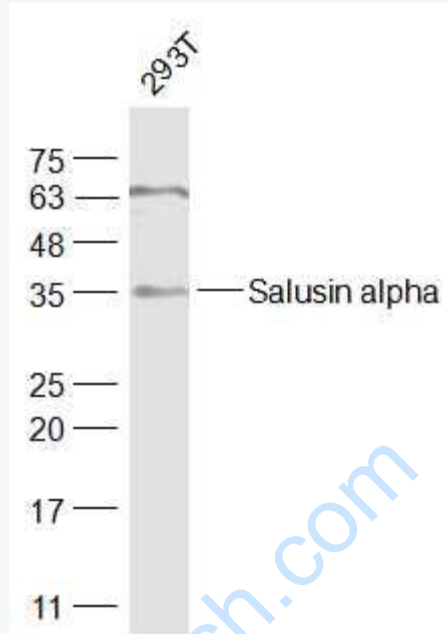
[SwissProt: Q5JU69](#)Human

[Unigene: 444106](#)Human

**Important Note:**

This product as supplied is intended for research use only, not for use in human, therapeutic or diagnostic applications.

Picture:



Sample:

293T(Human) Cell Lysate at 30 ug

Primary: Anti-Salusin alpha (SL23427R) at 1/1000 dilution

Secondary: IRDye800CW Goat Anti-Rabbit IgG at 1/20000 dilution

Predicted band size: 33 kD

Observed band size: 35 kD