



## Rabbit Anti-EPO antibody

SL2343R

<b>Product Name:</b>	EPO
<b>Chinese Name:</b>	红细胞生成素抗体
<b>Alias:</b>	Erythropoietin precursor; EP; EPO alpha; EPO; Epoetin; Erythropoetin; Erythropoietin; MGC138142; EPO_HUMAN.
<b>文献引用</b> <b>PubMed</b> :	<p><b>Specific References(3)</b> SL2343R has been referenced in 3 publications.</p> <p><b>[IF=3.73]</b>DeNiro, Michael, and Futwan A. Al-Mohanna. "Nuclear Factor Kappa-B Signaling Is Integral to Ocular Neovascularization in Ischemia-Independent Microenvironment." PLOS ONE 9.7 (2014): e101602.<b>IHC-P;Mouse.</b>  <a href="#">PubMed:25050547</a></p> <p><b>[IF=3.05]</b>Ichii, Osamu, et al. "Female cotton rats (Sigmodon hispidus) develop chronic anemia with renal inflammation and cystic changes." Histochemistry and Cell Biology (2016): 1-12.<b>WB;Rat.</b>  <a href="#">PubMed:27099161</a></p> <p><b>[IF=3.35]</b>Li, Xu, et al. "Oxidative stress induces the decline of brain EPO expression in aging rats." Experimental Gerontology (2016).<b>WB;Rat.</b>  <a href="#">PubMed:27452792</a></p>
<b>Organism Species:</b>	Rabbit
<b>Clonality:</b>	Polyclonal
<b>React Species:</b>	Human,Mouse,Rat,Dog,Pig,Cow,Horse,Rabbit,Sheep,
<b>Applications:</b>	WB=1:500-2000ELISA=1:500-1000IHC-P=1:400-800IHC-F=1:400-800IF=1:100-500 (Paraffin sections need antigen repair) not yet tested in other applications. optimal dilutions/concentrations should be determined by the end user.
<b>Molecular weight:</b>	28kDa

<b>Cellular localization:</b>	Secretory protein
<b>Form:</b>	Lyophilized or Liquid
<b>Concentration:</b>	1mg/ml
<b>immunogen:</b>	KLH conjugated synthetic peptide derived from human Erythropoietin:101-193/193
<b>Isotype:</b>	IgG
<b>Purification:</b>	affinity purified by Protein A
<b>Storage Buffer:</b>	0.01M TBS(pH7.4) with 1% BSA, 0.03% Proclin300 and 50% Glycerol.
<b>Storage:</b>	Store at -20 °C for one year. Avoid repeated freeze/thaw cycles. The lyophilized antibody is stable at room temperature for at least one month and for greater than a year when kept at -20°C. When reconstituted in sterile pH 7.4 0.01M PBS or diluent of antibody the antibody is stable for at least two weeks at 2-4 °C.
<b>PubMed:</b>	<a href="#">PubMed</a>
<b>Product Detail:</b>	<p>Human erythropoietin is member of the EPO/TPO family and encodes a secreted, glycosylated cytokine hormone composed of four alpha helical bundles. The protein is found in the plasma and regulates red cell production by promoting erythroid differentiation and initiating hemoglobin synthesis. This protein also has neuroprotective activity against a variety of potential brain injuries and antiapoptotic functions in several tissue types. It is produced by kidney or liver of adult mammals and by liver of fetal or neonatal mammals.</p> <p><b>Function:</b> Erythropoietin is the principal hormone involved in the regulation of erythrocyte differentiation and the maintenance of a physiological level of circulating erythrocyte mass.</p> <p><b>Subcellular Location:</b> Secreted.</p> <p><b>Tissue Specificity:</b> Produced by kidney or liver of adult mammals and by liver of fetal or neonatal mammals.</p> <p><b>DISEASE:</b> Microvascular complications of diabetes 2 (MVCD2) [MIM:612623]: Pathological conditions that develop in numerous tissues and organs as a consequence of diabetes mellitus. They include diabetic retinopathy, diabetic nephropathy leading to end-stage renal disease, and diabetic neuropathy. Diabetic retinopathy remains the major cause of new-onset blindness among diabetic adults. It is characterized by vascular permeability and increased tissue ischemia and angiogenesis. Note=Disease susceptibility is associated with variations affecting the gene represented in this entry.</p> <p><b>Similarity:</b> Belongs to the EPO/TPO family.</p> <p><b>SWISS:</b> P01588</p>

**Gene ID:**  
2056

**Database links:**

[Entrez Gene: 404002](#)Dog

[Entrez Gene: 2056](#)Human

[Entrez Gene: 13856](#)Mouse

[Entrez Gene: 24335](#)Rat

[Omim: 133170](#)Human

[SwissProt: P33707](#)Dog

[SwissProt: P01588](#)Human

[SwissProt: P07321](#)Mouse

[SwissProt: P29676](#)Rat

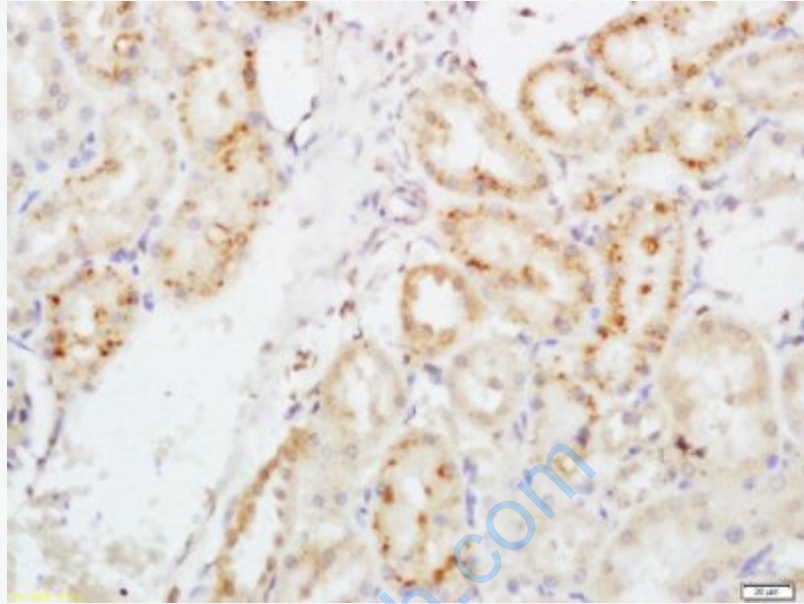
[Unigene: 2303](#)Human

[Unigene: 349116](#)Mouse

[Unigene: 11365](#)Rat

**Important Note:**

This product as supplied is intended for research use only, not for use in human, therapeutic or diagnostic applications.



**Picture:**

Tissue/cell: Rat kidney tissue; 4% Paraformaldehyde-fixed and paraffin-embedded;  
Antigen retrieval: citrate buffer ( 0.01M, pH 6.0 ), Boiling bathing for 15min; Block endogenous peroxidase by 3% Hydrogen peroxide for 30min; Blocking buffer (normal goat serum,C-0005) at 37°C for 20 min;  
Incubation: Anti-EPO Polyclonal Antibody, Unconjugated(SL2343R) 1:200, overnight at 4°C, followed by conjugation to the secondary antibody(SP-0023) and DAB(C-0010) staining