



Rabbit Anti-CD8 antibody

SL23448R

Product Name:	CD8
Chinese Name:	CD8抗体
Alias:	CD 8a; CD8 alpha chain; CD8; CD8 antigen alpha chain; CD8 antigen alpha polypeptide; CD8 antigen alpha polypeptide (p32); CD8a; CD8a antigen; CD8a molecule; CD8A_MOUSE; Leu 2; Leu2; Leu2 T lymphocyte antigen; MAL; OKT8 T cell antigen; OTTHUMP00000160760; OTTHUMP00000160764; OTTHUMP00000203528; OTTHUMP00000203721; p32; T cell antigen Leu2; T cell co receptor; T cell coreceptor; T cell surface glycoprotein CD8 alpha chain; T lymphocyte differentiation antigen T8/Leu 2; T lymphocyte differentiation antigen T8/Leu2; T-cell surface glycoprotein CD8 alpha chain; T-lymphocyte differentiation antigen T8/Leu-2; T8 T cell antigen; Cd8a; Lyt-2; Lyt2.
Organism Species:	Rabbit
Clonality:	Polyclonal
React Species:	Mouse,
Applications:	WB=1:500-2000ELISA=1:500-1000 not yet tested in other applications. optimal dilutions/concentrations should be determined by the end user.
Molecular weight:	27kDa
Cellular localization:	The cell membrane
Form:	Lyophilized or Liquid
Concentration:	1mg/ml
immunogen:	KLH conjugated synthetic peptide derived from mouse CD8:51-150/247<Extracellular>
Lsotype:	IgG
Purification:	affinity purified by Protein A
Storage Buffer:	0.01M TBS(pH7.4) with 1% BSA, 0.03% Proclin300 and 50% Glycerol.
Storage:	Store at -20 °C for one year. Avoid repeated freeze/thaw cycles. The lyophilized antibody is stable at room temperature for at least one month and for greater than a year when kept at -20°C. When reconstituted in sterile pH 7.4 0.01M PBS or diluent of antibody the antibody is stable for at least two weeks at 2-4 °C.

PubMed:[PubMed](#)

The CD8 antigen is a cell surface glycoprotein found on most cytotoxic T lymphocytes that mediates efficient cell-cell interactions within the immune system. The CD8 antigen acts as a coreceptor with the T-cell receptor on the T lymphocyte to recognize antigens displayed by an antigen presenting cell in the context of class I MHC molecules. The coreceptor functions as either a homodimer composed of two alpha chains or as a heterodimer composed of one alpha and one beta chain. Both alpha and beta chains share significant homology to immunoglobulin variable light chains. This gene encodes the CD8 alpha chain. Multiple transcript variants encoding different isoforms have been found for this gene. [provided by RefSeq, Nov 2011].

Function:

Identifies cytotoxic/suppressor T-cells that interact with MHC class I bearing targets. CD8 is thought to play a role in the process of T-cell mediated killing. CD8 alpha chains binds to class I MHC molecules alpha-3 domains.

Subunit:

In general heterodimer of an alpha and a beta chain linked by two disulfide bonds. Can also form homodimers.

Subcellular Location:

Membrane; Single-pass type I membrane protein.

Product Detail:**Similarity:**

Contains 1 Ig-like V-type (immunoglobulin-like) domain.

SWISS:

P01731

Gene ID:

12525

Database links:

[Entrez Gene: 925](#)Human

[Entrez Gene: 926](#)Human

[Entrez Gene: 12525](#)Mouse

[Entrez Gene: 12526](#)Mouse

[Omim: 186910](#)Human

[SwissProt: P01732](#)Human

[SwissProt: P10966](#)Human

[SwissProt: P01731](#)Mouse

[SwissProt: P10300](#)Mouse

[Unigene: 405667](#)Human

[Unigene: 85258](#)Human

[Unigene: 1858](#)Mouse

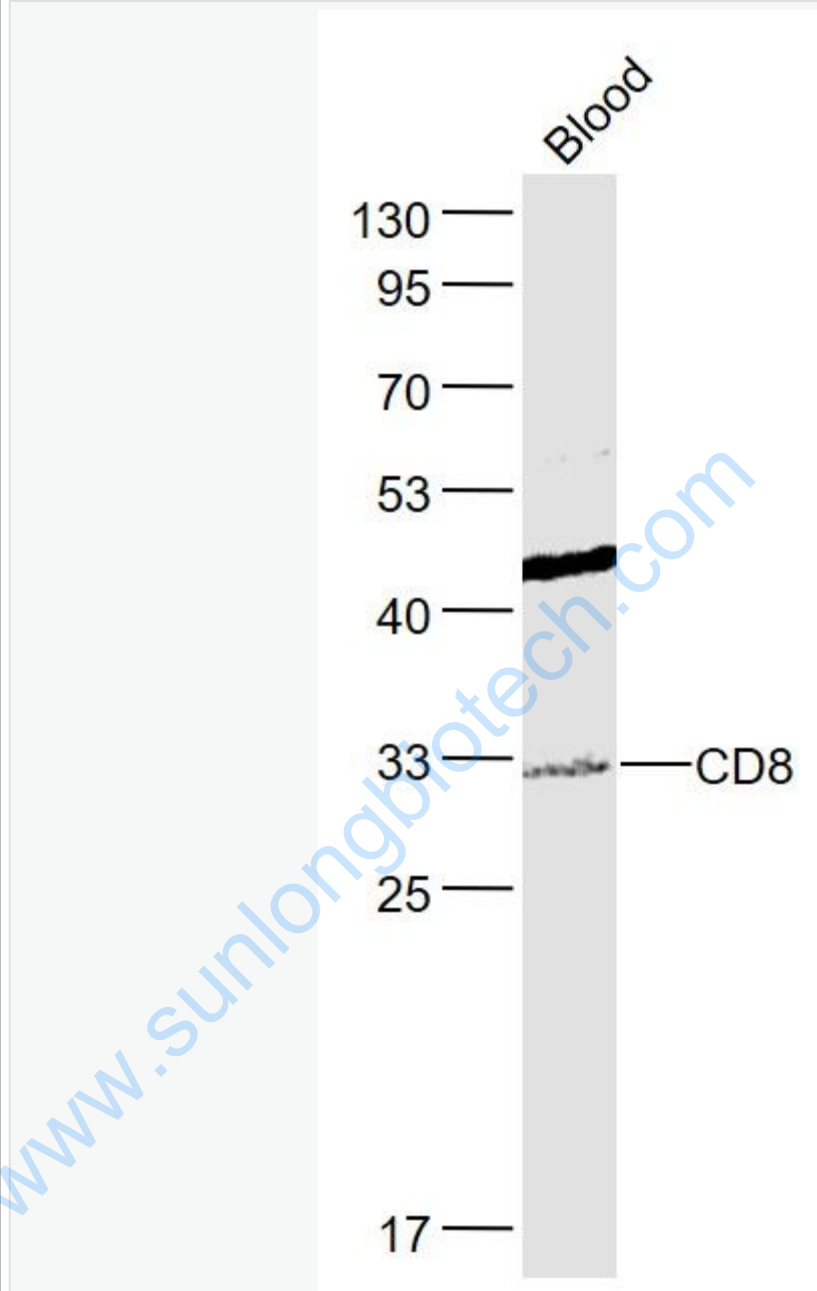
[Unigene: 333148](#)Mouse

Important Note:

This product as supplied is intended for research use only, not for use in human, therapeutic or diagnostic applications.

www.sunlongbiotech.com

Picture:



Sample:

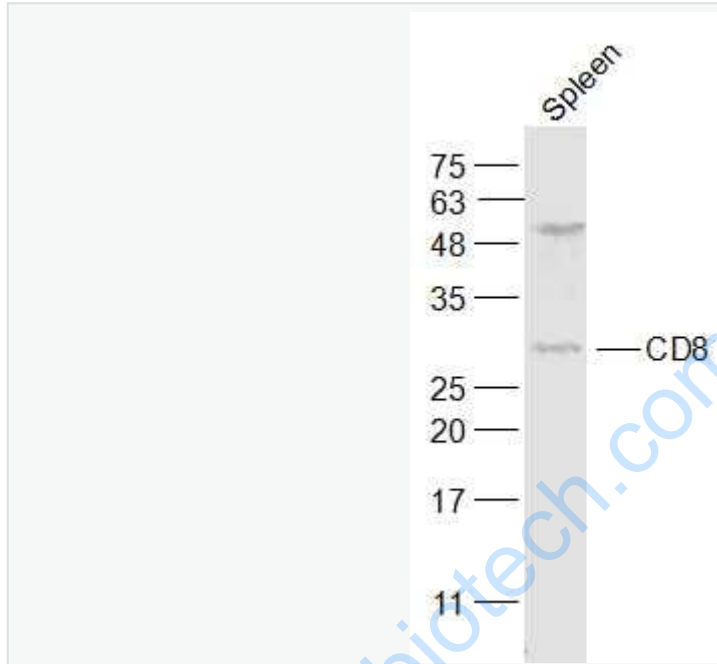
Blood (Mouse) Lysate at 40 ug

Primary: Anti- CD8 (SL23448R) at 1/1000 dilution

Secondary: IRDye800CW Goat Anti-Rabbit IgG at 1/20000 dilution

Predicted band size: 27 kD

Observed band size: 32kD



Sample:

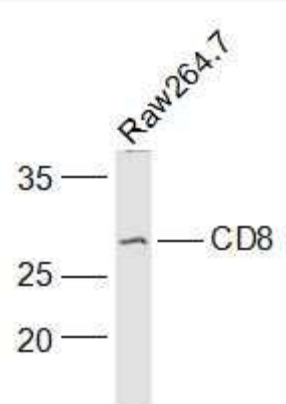
Spleen (Mouse) Lysate at 40 ug

Primary: Anti-CD8 (SL23448R) at 1/1000 dilution

Secondary: IRDye800CW Goat Anti-Rabbit IgG at 1/20000 dilution

Predicted band size: 27 kD

Observed band size: 27 kD



Sample:

Raw264.7(Mouse) Cell Lysate at 30 ug

Primary: Anti-CD8 (SL23448R) at 1/1000 dilution

Secondary: IRDye800CW Goat Anti-Rabbit IgG at 1/20000 dilution

Predicted band size: 27 kD

Observed band size: 27 kD

www.sunlongbiotech.com