



Rabbit Anti-PDLIM1 antibody

SL2345R

| | |
|-------------------------------|---|
| Product Name: | PDLIM1 |
| Chinese Name: | Cytoskeleton蛋白C端PDLIM1抗体 |
| Alias: | C terminal LIM domain protein 1; C-terminal LIM domain protein 1; Carboxy terminal LIM domain protein 1; CLIM 1; CLIM1; CLP 36; CLP36; Elfin; Enigma; Enigma homolog; hCLIM 1; hCLIM1; LIM domain protein CLP 36; LIM domain protein CLP-36; LIM domain protein CLP36; PDLI1_HUMAN; PDLIM 1; Pdim1; PDZ and LIM domain 1; PDZ and LIM domain protein 1. |
| Organism Species: | Rabbit |
| Clonality: | Polyclonal |
| React Species: | Human,Mouse,Rat,Chicken,Dog,Pig,Cow,Rabbit, |
| Applications: | WB=1:500-2000ELISA=1:500-1000 not yet tested in other applications. optimal dilutions/concentrations should be determined by the end user. |
| Molecular weight: | 36kDa |
| Cellular localization: | cytoplasmic |
| Form: | Lyophilized or Liquid |
| Concentration: | 1mg/ml |
| immunogen: | KLH conjugated synthetic peptide derived from human PDLIM1:251-329/329 |
| Lsotype: | IgG |
| Purification: | affinity purified by Protein A |
| Storage Buffer: | 0.01M TBS(pH7.4) with 1% BSA, 0.03% Proclin300 and 50% Glycerol. |
| Storage: | Store at -20 °C for one year. Avoid repeated freeze/thaw cycles. The lyophilized antibody is stable at room temperature for at least one month and for greater than a year when kept at -20°C. When reconstituted in sterile pH 7.4 0.01M PBS or diluent of antibody the antibody is stable for at least two weeks at 2-4 °C. |
| PubMed: | PubMed |
| Product Detail: | PDLIM1 is a cytoskeletal protein that may act as an adapter that brings other proteins to the cytoskeleton. PDLIM1 is strongly expressed in the heart and skeletal muscle, moderately expressed in the spleen, small intestine, colon, placenta, and lung, and minimally expressed in liver, thymus, kidney, prostate and pancreas. |

It is not found in the brain, testis, ovary, and peripheral blood leukocytes.

Function:

Cytoskeletal protein that may act as an adapter that brings other proteins (like kinases) to the cytoskeleton.

Subunit:

Interacts with alpha-actinins 1, 2 and 4.

Subcellular Location:

Cytoplasm. Cytoplasm, cytoskeleton. Note=Associates with the actin stress fibers.

Tissue Specificity:

Strongly expressed in the heart and skeletal muscle, moderately expressed in the spleen, small intestine, colon, placenta, and lung. A lower level expression is seen in liver, thymus, kidney, prostate and pancreas and is not found in the brain, testis, ovary, and peripheral blood leukocytes.

Similarity:

Contains 1 LIM zinc-binding domain.

Contains 1 PDZ (DHR) domain.

SWISS:

O00151

Gene ID:

9124

Database links:

[Entrez Gene: 9124](#)Human

[Entrez Gene: 54132](#)Mouse

[Entrez Gene: 54133](#)Rat

[Omim: 605900](#)Human

[SwissProt: O00151](#)Human

[SwissProt: O70400](#)Mouse

[SwissProt: Q3TZ17](#)Mouse

[SwissProt: P52944](#)Rat

[Unigene: 368525](#)Human

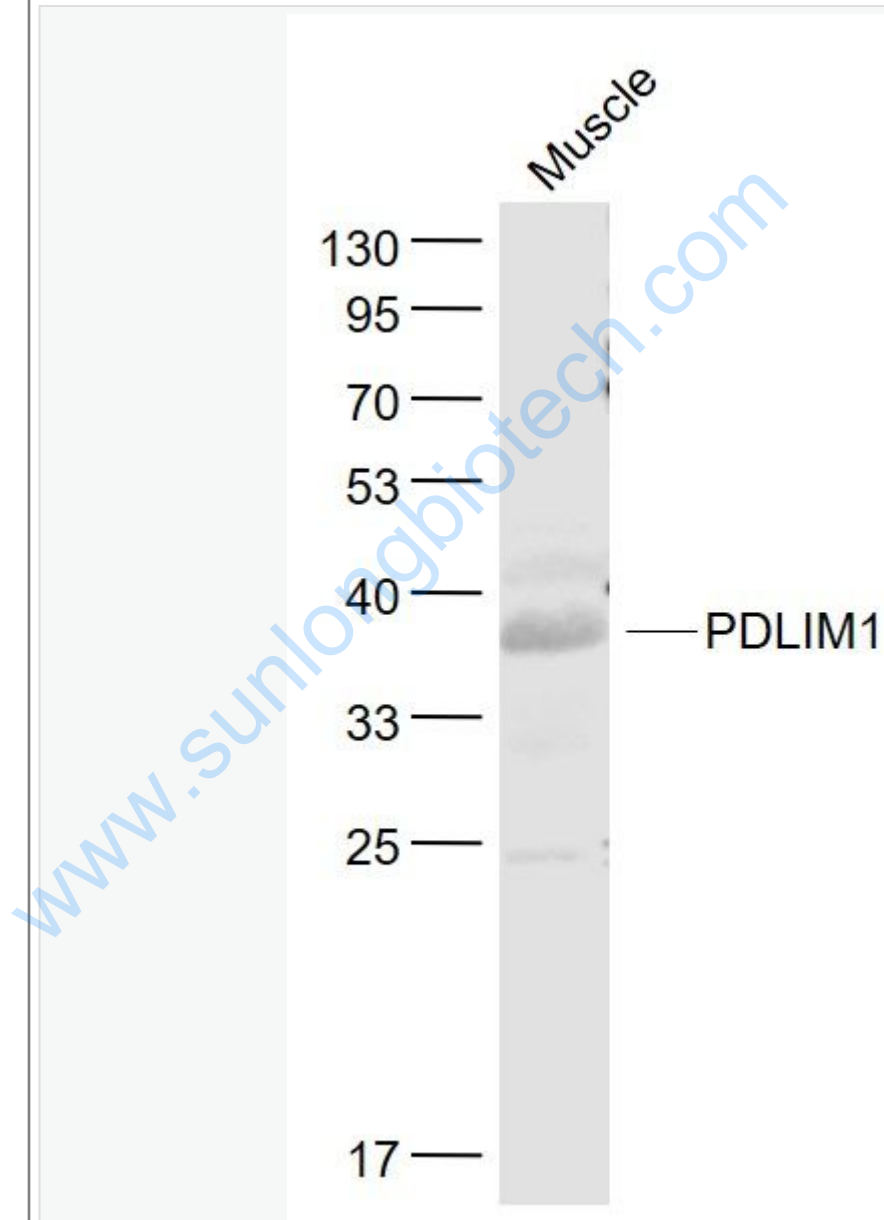
[Unigene: 5567](#)Mouse

[Unigene: 11170Rat](#)

Important Note:

This product as supplied is intended for research use only, not for use in human, therapeutic or diagnostic applications.

Picture:



Sample:

Muscle (Mouse) Lysate at 40 ug

Primary: Anti- PDLIM1 (SL2345R) at 1/1000 dilution

Secondary: IRDye800CW Goat Anti-Rabbit IgG at 1/20000 dilution

Predicted band size: 36 kD

Observed band size: 36 kD

www.sunlongbiotech.com