



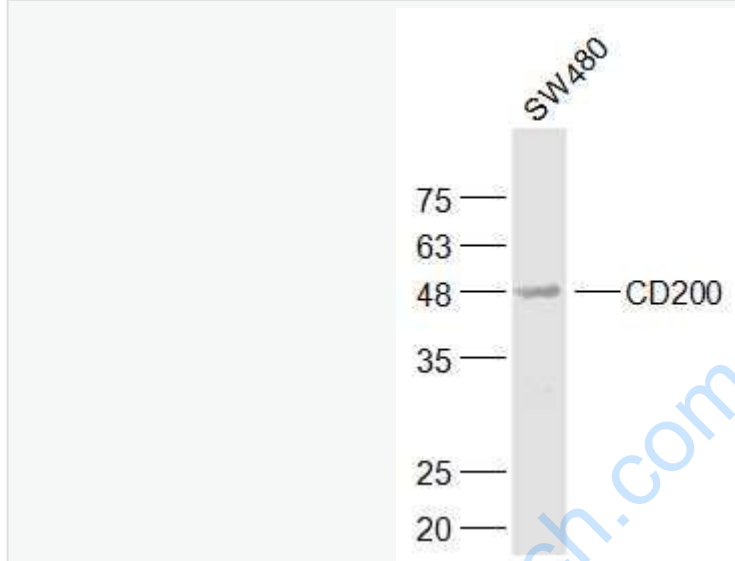
Rabbit Anti-CD200 antibody

SL23468R

Product Name:	CD200
Chinese Name:	膜glycoproteinCD200抗体
Alias:	CD200; CD200 antigen; CD200 molecule; MOX1; MOX2; MRC; MRC OX 2 antigen; My033; OX 2; OX 2 membrane glycoprotein precursor; OX-2 membrane glycoprotein; OX2G; OX2G_HUMAN.
Organism Species:	Rabbit
Clonality:	Polyclonal
React Species:	Human,Mouse,
Applications:	WB=1:500-2000ELISA=1:500-1000 not yet tested in other applications. optimal dilutions/concentrations should be determined by the end user.
Molecular weight:	28kDa
Cellular localization:	The cell membrane
Form:	Lyophilized or Liquid
Concentration:	1mg/ml
immunogen:	KLH conjugated synthetic peptide derived from human CD200 :31-130/278<Extracellular>
Lsotype:	IgG
Purification:	affinity purified by Protein A
Storage Buffer:	0.01M TBS(pH7.4) with 1% BSA, 0.03% Proclin300 and 50% Glycerol.
Storage:	Store at -20 °C for one year. Avoid repeated freeze/thaw cycles. The lyophilized antibody is stable at room temperature for at least one month and for greater than a year when kept at -20°C. When reconstituted in sterile pH 7.4 0.01M PBS or diluent of antibody the antibody is stable for at least two weeks at 2-4 °C.
PubMed:	PubMed
Product Detail:	CD200是 I 型膜glycoprotein, 为免疫球蛋白超家族的新成员, 广泛表达在人类胸腺细胞、B细胞、激活的T细胞、滤泡状树突细胞、神经元及血管内皮上。可表达于B细胞及其增殖性疾病和一部分T细胞。近年来研究发现, CD200与CD200R间的相互作用可以传递抑制性信号减低髓样细胞的活性, 改变其迁移。CD200在免疫疾病和抑

制排斥反应中作为一种免疫耐受信号，它的一些相关分子在免疫调节中也具有一定的作用。

Picture:



Sample:

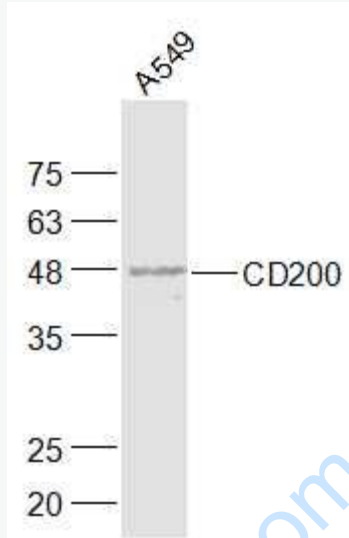
SW480(Human) Cell Lysate at 30 ug

Primary: Anti-CD200 (SL23468R) at 1/1000 dilution

Secondary: IRDye800CW Goat Anti-Rabbit IgG at 1/20000 dilution

Predicted band size: 28 kD

Observed band size: 47 kD



Sample:

A549(Human) Cell Lysate at 30 ug

Primary: Anti-CD200 (SL23468R) at 1/1000 dilution

Secondary: IRDye800CW Goat Anti-Rabbit IgG at 1/20000 dilution

Predicted band size: 28 kD

Observed band size: 47 kD