



Rabbit Anti-Cytochrome P450 2B6 antibody

SL2352R

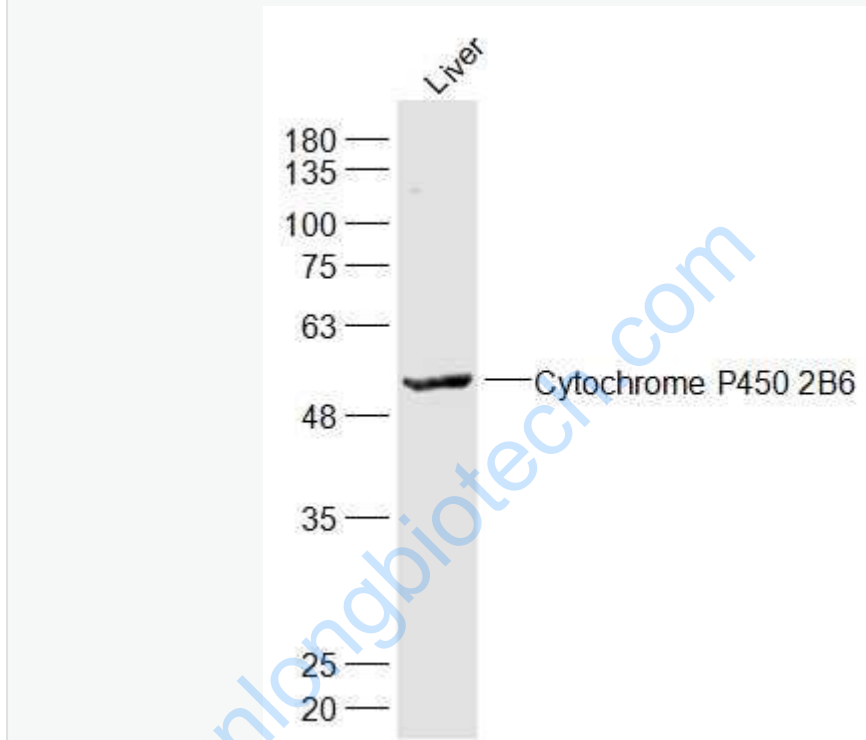
Product Name:	Cytochrome P450 2B6
Chinese Name:	细胞色素P450 2B6抗体
Alias:	11B1; CP2B6_HUMAN; CPB 6; CPB6; CYP 2B6; CYP IIB6; CYP2B; CYP2B6; CYP2B7; CYP2B7P; CYPIIB6; Cytochrome P450 2B6; Cytochrome P450 family 2 subfamily B; Cytochrome P450 family 2 subfamily B polypeptide 6; Cytochrome P450 IIB1; Cytochrome P450 phenobarbital inducible; Cytochrome P450 subfamily IIB (phenobarbital inducible); Cytochrome P450 subfamily IIB (phenobarbital inducible) polypeptide 6; Cytochrome P450 subfamily IIB polypeptide 6; 1,4-cineole 2-exo-monooxygenase; IIB1; P450; P450 IIB1; P450IIB1.
文献引用 PubMed :	<p>Specific References(1) SL2352R has been referenced in 1 publications.</p> <p>[IF=2.80]Man, Shuli, et al. "Combination therapy of cyclophosphamide and Rhizoma Paridis Saponins on anti-hepatocarcinoma mice and effects on cytochrome p450 enzyme expression." Steroids (2013).WB;Rat.</p> <p style="text-align: right;">PubMed:24291418</p>
Organism Species:	Rabbit
Clonality:	Polyclonal
React Species:	Human,Mouse,Rat,Dog,Rabbit,
Applications:	WB=1:500-2000ELISA=1:500-1000IHC-P=1:400-800IHC-F=1:400-800IF=1:100-500 (Paraffin sections need antigen repair) not yet tested in other applications. optimal dilutions/concentrations should be determined by the end user.
Molecular weight:	56kDa
Cellular localization:	cytoplasmicThe cell membrane Mitochondrion
Form:	Lyophilized or Liquid
Concentration:	1mg/ml
immunogen:	KLH conjugated synthetic peptide derived from human Cytochrome P450 2B6:401-491/491

Lsotype:	IgG
Purification:	affinity purified by Protein A
Storage Buffer:	0.01M TBS(pH7.4) with 1% BSA, 0.03% Proclin300 and 50% Glycerol.
Storage:	Store at -20 °C for one year. Avoid repeated freeze/thaw cycles. The lyophilized antibody is stable at room temperature for at least one month and for greater than a year when kept at -20°C. When reconstituted in sterile pH 7.4 0.01M PBS or diluent of antibody the antibody is stable for at least two weeks at 2-4 °C.
PubMed:	PubMed
Product Detail:	<p>Cytochromes P450 are a group of heme-thiolate monooxygenases. In liver microsomes, this enzyme is involved in an NADPH-dependent electron transport pathway. It oxidizes a variety of structurally unrelated compounds, including steroids, fatty acids, and xenobiotics.</p> <p>Function: Cytochromes P450 are a group of heme-thiolate monooxygenases. In liver microsomes, this enzyme is involved in an NADPH-dependent electron transport pathway. It oxidizes a variety of structurally unrelated compounds, including steroids, fatty acids, and xenobiotics. Acts as a 1,4-cineole 2-exo-monooxygenase.</p> <p>Subcellular Location: Endoplasmic reticulum membrane; Peripheral membrane protein. Microsome membrane; Peripheral membrane protein.</p> <p>Tissue Specificity: Expressed in liver, lung and heart right ventricle.</p> <p>Post-translational modifications: Phosphorylation is accompanied by a decrease in enzyme activity (By similarity).</p> <p>Similarity: Belongs to the cytochrome P450 family.</p> <p>SWISS: P20813</p> <p>Gene ID: 1555</p> <p>Database links: Entrez Gene: 1555Human Omim: 123930Human SwissProt: P20813Human Unigene: 1360Human</p>

Important Note:

This product as supplied is intended for research use only, not for use in human, therapeutic or diagnostic applications.

Picture:



Sample:

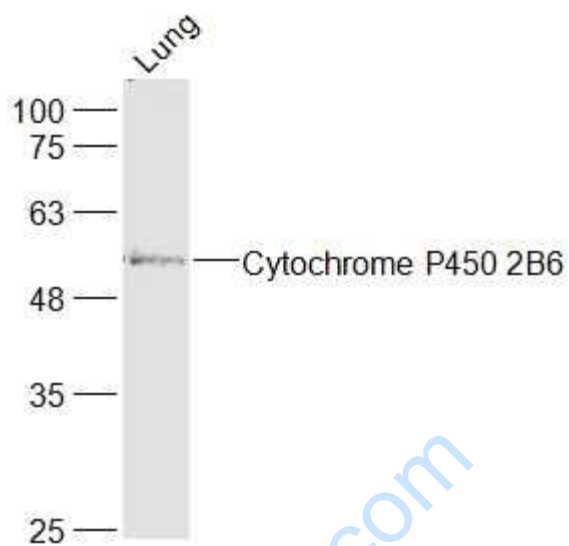
Liver (Mouse) Lysate at 40 ug

Primary: Anti-Cytochrome P450 2B6 (SL2352R) at 1/1000 dilution

Secondary: IRDye800CW Goat Anti-Rabbit IgG at 1/20000 dilution

Predicted band size: 56 kD

Observed band size: 56 kD



Sample:

Lung (Mouse) Lysate at 40 ug

Primary: Anti-Cytochrome P450 2B6 (SL2352R) at 1/1000 dilution

Secondary: IRDye800CW Goat Anti-Rabbit IgG at 1/20000 dilution

Predicted band size: 56 kD

Observed band size: 56 kD