



Rabbit Anti-Nidogen antibody

SL23656R

Product Name:	Nidogen
Chinese Name:	巢蛋白1抗体
Alias:	Ent; Entactin 1; Entactin; NID 1; NID; NID-1; Nid1; Nidogen (enactin); Nidogen 1; Nidogen; Nidogen-1; NID1 HUMAN.
Organism Species:	Rabbit
Clonality:	Polyclonal
React Species:	Human,Mouse,Rat,
Applications:	WB=1:500-2000IHC-P=1:400-800IHC-F=1:400-800ICC=1:100-500IF=1:100-500 (Paraffin sections need antigen repair) not yet tested in other applications. optimal dilutions/concentrations should be determined by the end user.
Molecular weight:	133kDa
Cellular localization:	The cell membraneExtracellular matrixSecretory protein
Form:	Lyophilized or Liquid
Concentration:	1mg/ml
immunogen:	KLH conjugated synthetic peptide derived from human Nidogen:201-300/1247
Lsotype:	IgG
Purification:	affinity purified by Protein A
Storage Buffer:	0.01M TBS(pH7.4) with 1% BSA, 0.03% Proclin300 and 50% Glycerol.
Storage:	Store at -20 °C for one year. Avoid repeated freeze/thaw cycles. The lyophilized antibody is stable at room temperature for at least one month and for greater than a year when kept at -20°C. When reconstituted in sterile pH 7.4 0.01M PBS or diluent of antibody the antibody is stable for at least two weeks at 2-4 °C.
PubMed:	PubMed
Product Detail:	Basement membranes are the earliest extracellular matrices produced during embryogenesis. They are synthesized and incorporated into the supramolecular architecture of several components, including laminins, Collagen IV, Nidogen and proteoglycans. Nidogen/Entactin, a sulfated glycoprotein, acts as a link between the extracellular matrix molecules Laminin 1 and Collagen Type IV, and thereby participates in the assembly of basement membranes. Nidogen is a highly conserved

member of the Nidogen family, which also includes Nidogen-2. Nidogen-2 has a high level of N- and O-glycosylation, and it interacts with Collagens Type I and IV and Perlecan at a comparable level to Nidogen. Nidogen is synthesized and secreted in primary and established mesenchymal peritubular cells and myoepithelial cells, and it affects adhesion of peritubular cells in an autocrine manner. Nidogen is expressed during embryonic and fetal development exclusively in fully developed basement membranes of the ectoderm and is not expressed in the developing endodermal basement membrane or in membranes disrupted during mesoderm formation. Nidogen also cooperates with Laminin 1 to regulate b-casein expression.

Function:

Sulfated glycoprotein widely distributed in basement membranes and tightly associated with laminin. Also binds to collagen IV and perlecan. It probably has a role in cell-extracellular matrix interactions.

Subunit:

Interacts with FBLN1 and LGALS3BP. Interacts with PLXDC1.

Subcellular Location:

Secreted, extracellular space, extracellular matrix, basement membrane.

Post-translational modifications:

N- and O-glycosylated.

Similarity:

Contains 6 EGF-like domains.

Contains 1 NIDO domain.

Contains 1 nidogen G2 beta-barrel domain.

Contains 1 thyroglobulin type-1 domain.

SWISS:

P14543

Gene ID:

4811

Database links:

[Entrez Gene: 534319](#)Cow

[Entrez Gene: 4811](#)Human

[Entrez Gene: 18073](#)Mouse

[Entrez Gene: 25494](#)Rat

[Omin: 131390](#)Human

[SwissProt: P14543](#)Human

[SwissProt: P10493](#)Mouse

[SwissProt: P08460](#)Rat

[Unigene: 356624](#)Human

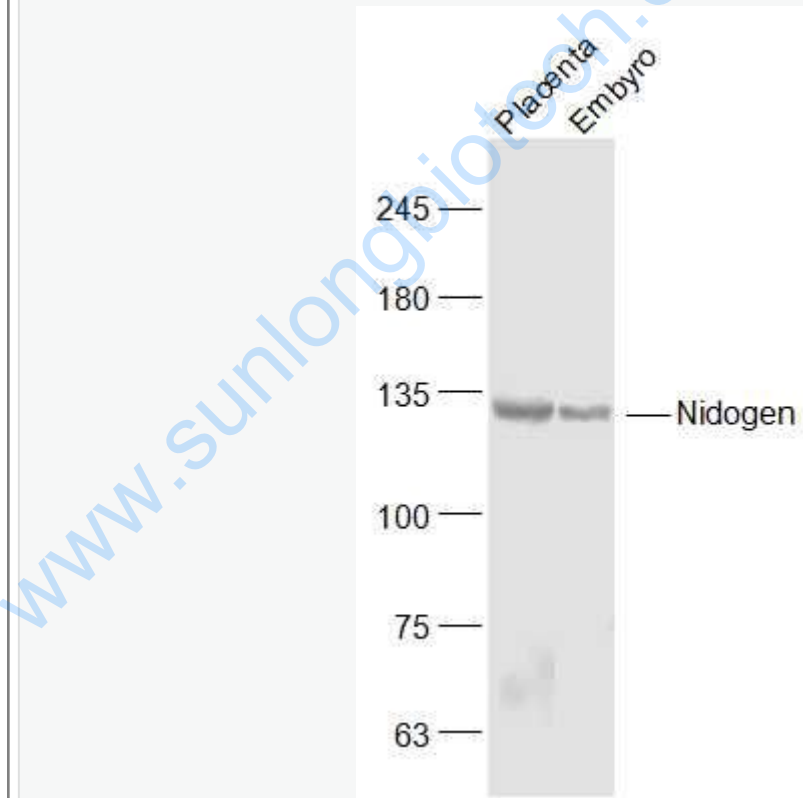
[Unigene: 4691](#)Mouse

[Unigene: 105658](#)Rat

Important Note:

This product as supplied is intended for research use only, not for use in human, therapeutic or diagnostic applications.

Picture:



Sample:

Placenta (Mouse) Lysate at 40 ug

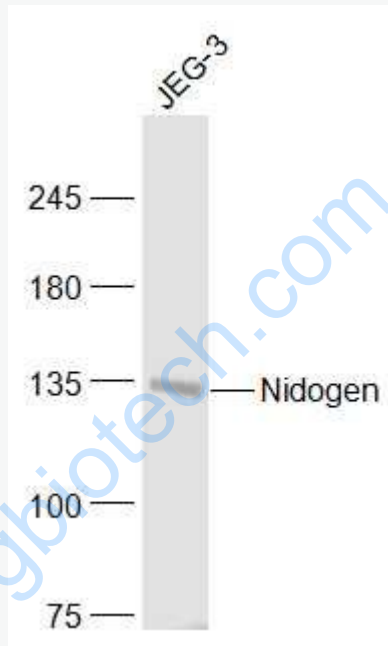
Embryo (Mouse) Lysate at 40 ug

Primary: Anti-Nidogen (SL23656R) at 1/1000 dilution

Secondary: IRDye800CW Goat Anti-Rabbit IgG at 1/20000 dilution

Predicted band size: 133 kD

Observed band size: 133 kD



Sample:

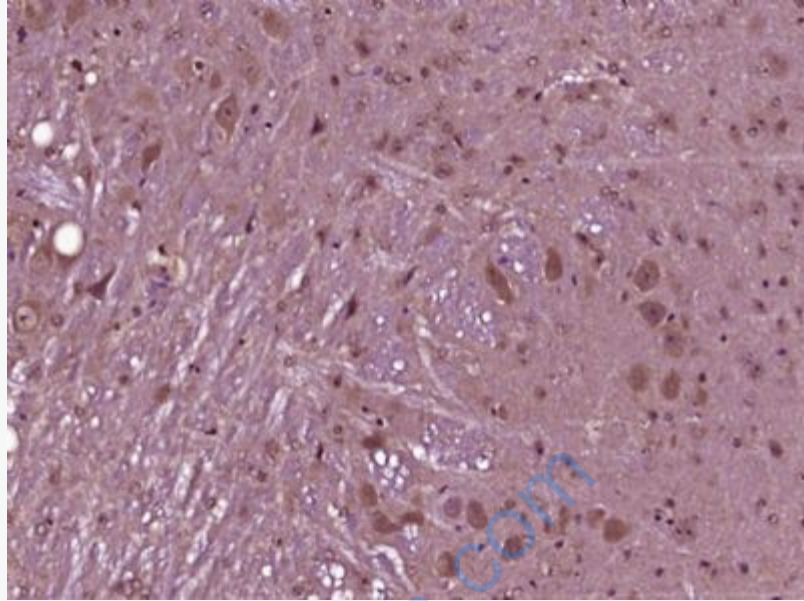
JEG-3(Human) Cell Lysate at 30 ug

Primary: Anti-Nidogen (SL23656R) at 1/1000 dilution

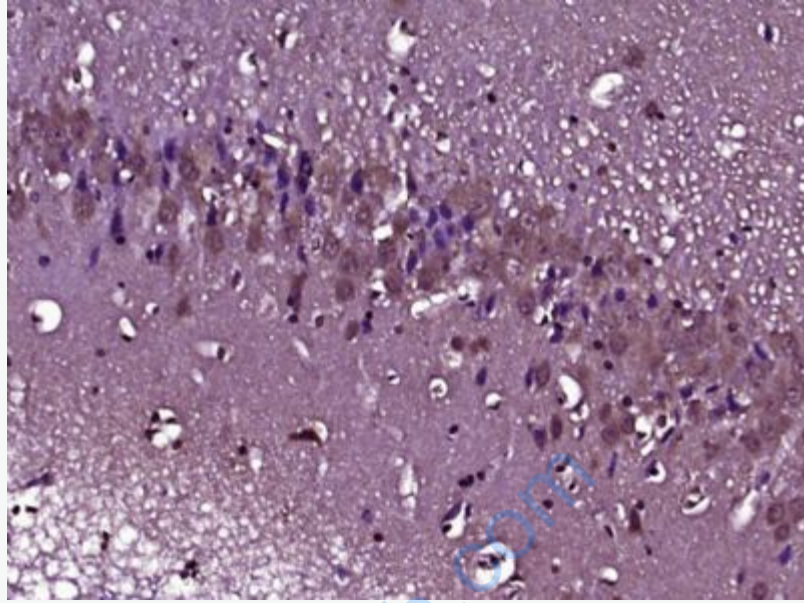
Secondary: IRDye800CW Goat Anti-Rabbit IgG at 1/20000 dilution

Predicted band size: 133 kD

Observed band size: 133 kD



Paraformaldehyde-fixed, paraffin embedded (Mouse brain); Antigen retrieval by boiling in sodium citrate buffer (pH6.0) for 15min; Block endogenous peroxidase by 3% hydrogen peroxide for 20 minutes; Blocking buffer (normal goat serum) at 37°C for 30min; Antibody incubation with (Nidogen) Polyclonal Antibody, Unconjugated (SL23656R) at 1:400 overnight at 4°C, followed by operating according to SP Kit(Rabbit) (sp-0023) instructions and DAB staining.



Paraformaldehyde-fixed, paraffin embedded (Rat brain); Antigen retrieval by boiling in sodium citrate buffer (pH6.0) for 15min; Block endogenous peroxidase by 3% hydrogen peroxide for 20 minutes; Blocking buffer (normal goat serum) at 37°C for 30min; Antibody incubation with (Nidogen) Polyclonal Antibody, Unconjugated (SL23656R) at 1:400 overnight at 4°C, followed by operating according to SP Kit(Rabbit) (sp-0023) instructions and DAB staining.