



Rabbit Anti-LTA4H antibody

SL23675R

Product Name:	LTA4H
Chinese Name:	白三烯A4水解酶抗体
Alias:	Leukotriene A4 hydrolase LTA4; LTA4 hydrolase; LTA4H; LKHA4_HUMAN.
Organism Species:	Rabbit
Clonality:	Polyclonal
React Species:	Human,Mouse,Rat,Dog,Pig,Horse,Rabbit,Sheep,
Applications:	WB=1:500-2000ELISA=1:500-1000IHC-P=1:400-800IHC-F=1:400-800ICC=1:100-500IF=1:100-500 (Paraffin sections need antigen repair) not yet tested in other applications. optimal dilutions/concentrations should be determined by the end user.
Molecular weight:	69kDa
Cellular localization:	cytoplasmic
Form:	Lyophilized or Liquid
Concentration:	1mg/ml
immunogen:	KLH conjugated synthetic peptide derived from human LTA4H:171-270/611<Cytoplasmic>
Lsotype:	IgG
Purification:	affinity purified by Protein A
Storage Buffer:	0.01M TBS(pH7.4) with 1% BSA, 0.03% Proclin300 and 50% Glycerol.
Storage:	Store at -20 °C for one year. Avoid repeated freeze/thaw cycles. The lyophilized antibody is stable at room temperature for at least one month and for greater than a year when kept at -20°C. When reconstituted in sterile pH 7.4 0.01M PBS or diluent of antibody the antibody is stable for at least two weeks at 2-4 °C.
PubMed:	PubMed
Product Detail:	Leukotrienes are a group of bioactive compounds which play important roles in immediate hyposensitivity reactions and inflammation. Leukotriene A4 hydrolase hydrolyzes an epoxide moiety of leukotriene A4 (LTA4) to form leukotriene B4 (LTB4). The enzyme also has some peptidase activity. Function:

Epoxide hydrolase that catalyzes the final step in the biosynthesis of the proinflammatory mediator leukotriene B4. Has also aminopeptidase activity.

Subunit:

Monomer.

Subcellular Location:

Cytoplasm.

Tissue Specificity:

Isoform 1 and isoform 2 are expressed in monocytes, lymphocytes, neutrophils, reticulocytes, platelets and fibroblasts.

Post-translational modifications:

Phosphorylation at Ser-416 inhibits enzymatic activity.

Similarity:

Belongs to the peptidase M1 family.

SWISS:

P09960

Gene ID:

4048

Database links:

[Entrez Gene: 4048](#)Human

[Entrez Gene: 299732](#)Rat

[Omim: 151570](#)Human

[SwissProt: P09960](#)Human

[SwissProt: P30349](#)Rat

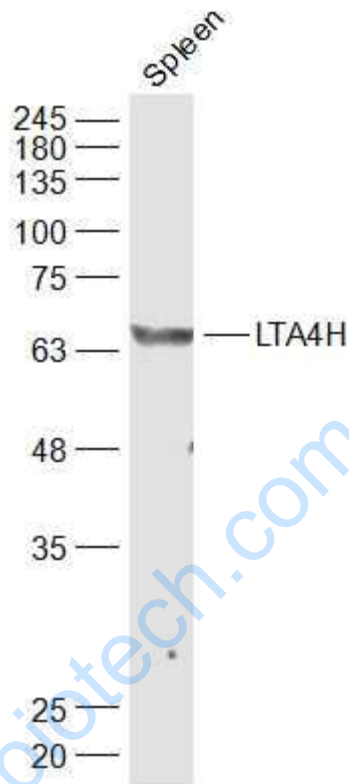
[Unigene: 524648](#)Human

[Unigene: 104990](#)Rat

Important Note:

This product as supplied is intended for research use only, not for use in human, therapeutic or diagnostic applications.

Picture:



Sample:

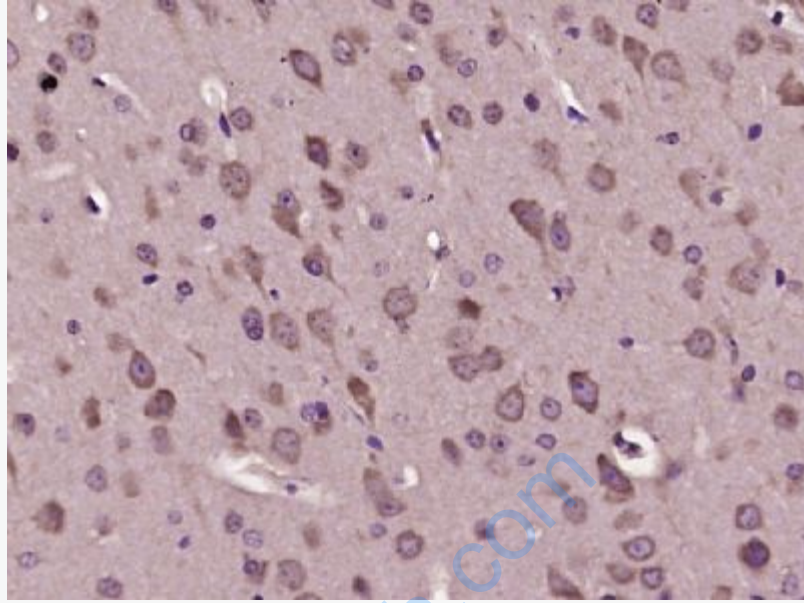
Spleen (Mouse) Lysate at 40 ug

Primary: Anti-LTA4H (SL23675R) at 1/1000 dilution

Secondary: IRDye800CW Goat Anti-Rabbit IgG at 1/20000 dilution

Predicted band size: 69 kD

Observed band size: 69 kD



Paraformaldehyde-fixed, paraffin embedded (mouse brain tissue); Antigen retrieval by boiling in sodium citrate buffer (pH6.0) for 15min; Block endogenous peroxidase by 3% hydrogen peroxide for 20 minutes; Blocking buffer (normal goat serum) at 37°C for 30min; Antibody incubation with (LTA4H) Polyclonal Antibody, Unconjugated (SL23675R) at 1:400 overnight at 4°C, followed by operating according to SP Kit(Rabbit) (sp-0023) instructions and DAB staining.