



Rabbit Anti-Cux2 antibody

SL23713R

Product Name:	Cux2
Chinese Name:	转录同源蛋白质CUX2抗体
Alias:	CDP2; Cut like homeobox 2; Cut-like 2; CUTL2; CUX2; Homeobox protein cut-like 2; Homeobox protein cux 2; Homeobox protein Cux-2; KIAA0293; CUX2_HUMAN.
Organism Species:	Rabbit
Clonality:	Polyclonal
React Species:	Human,Mouse,Rat,Chicken,Pig,Sheep,
Applications:	WB=1:500-2000ELISA=1:500-1000 not yet tested in other applications. optimal dilutions/concentrations should be determined by the end user.
Molecular weight:	162kDa
Cellular localization:	The nucleus
Form:	Lyophilized or Liquid
Concentration:	1mg/ml
immunogen:	KLH conjugated synthetic peptide derived from human Cux2:601-700/1486
Lsotype:	IgG
Purification:	affinity purified by Protein A
Storage Buffer:	0.01M TBS(pH7.4) with 1% BSA, 0.03% Proclin300 and 50% Glycerol.
Storage:	Store at -20 °C for one year. Avoid repeated freeze/thaw cycles. The lyophilized antibody is stable at room temperature for at least one month and for greater than a year when kept at -20°C. When reconstituted in sterile pH 7.4 0.01M PBS or diluent of antibody the antibody is stable for at least two weeks at 2-4 °C.
PubMed:	PubMed
Product Detail:	Cux2 is a marker for cortical subpopulations. Cux2 is an orthologue of the Drosophila cut gene, which encodes a homeodomain protein involved in neuronal specification. During cortical development Cux2 identifies two subpopulations with different spatial origins, migratory behaviours and phenotypic characteristics: (i) a population of interneurons, which invades the pallium from the subpallium; and (ii) a neuronal population produced in the pallium around embryonic day 11.5, which divides in the SVZ and accumulates in the intermediate zone (IZ). Subsequently, Cux2 is a marker of

upper cortical layers.

Function:

May be a transcription factor involved in neural specification. Binds to DNA in a sequence-specific manner

Subcellular Location:

Nuclear

Similarity:

Belongs to the CUT homeobox family.

Contains 3 CUT DNA-binding domains.

Contains 1 homeobox DNA-binding domain.

SWISS:

O14529

Gene ID:

23316

Database links:

[Entrez Gene: 23316](#)Human

[Entrez Gene: 13048](#)Mouse

[Entrez Gene: 288665](#)Rat

[Omim: 610648](#)Human

[SwissProt: O14529](#)Human

[SwissProt: P70298](#)Mouse

[Unigene: 124953](#)Human

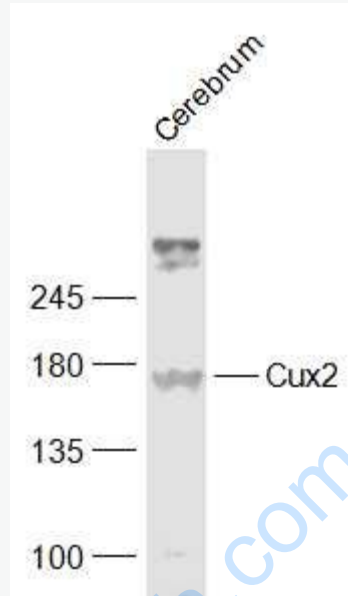
[Unigene: 156172](#)Mouse

[Unigene: 332661](#)Mouse

Important Note:

This product as supplied is intended for research use only, not for use in human, therapeutic or diagnostic applications.

Picture:



Sample:

Cerebrum (Mouse) Lysate at 40 ug

Primary: Anti-Cux2? (SL23713R) at 1/1000 dilution

Secondary: IRDye800CW Goat Anti-Rabbit IgG at 1/20000 dilution

Predicted band size: 162 kD

Observed band size: 162 kD