



Rabbit Anti-IFN-Beta antibody

SL23733R

Product Name:	IFN-Beta
Chinese Name:	Interferon β 抗体
Alias:	Interferon beta; Fibroblast interferon; IFB; IFF; IFN beta; IFNB 1; IFNB; IFNB1; Interferon beta 1 fibroblast; Interferon beta precursor; MGC96956.
Organism Species:	Rabbit
Clonality:	Polyclonal
React Species:	Mouse,Rat,
Applications:	WB=1:500-2000ELISA=1:500-1000IHC-P=1:400-800IHC-F=1:400-800ICC=1:100-500IF=1:100-500 (Paraffin sections need antigen repair) not yet tested in other applications. optimal dilutions/concentrations should be determined by the end user.
Molecular weight:	20kDa
Cellular localization:	Secretory protein
Form:	Lyophilized or Liquid
Concentration:	1mg/ml
immunogen:	KLH conjugated synthetic peptide derived from mouse IFN-Beta :22-100/184
Lsotype:	IgG
Purification:	affinity purified by Protein A
Storage Buffer:	0.01M TBS(pH7.4) with 1% BSA, 0.03% Proclin300 and 50% Glycerol.
Storage:	Store at -20 °C for one year. Avoid repeated freeze/thaw cycles. The lyophilized antibody is stable at room temperature for at least one month and for greater than a year when kept at -20°C. When reconstituted in sterile pH 7.4 0.01M PBS or diluent of antibody the antibody is stable for at least two weeks at 2-4 °C.
PubMed:	PubMed
Product Detail:	Interferon-Beta, IFN-Beta mainly by the fibroblast cell factor, belonging to a single gene encodes a protein that can interfere with the virus RNA or DNA replication and inhibit virus growth, and significantly enhance NK cell activity, through the promotion of MHC I molecule expression and enhance the CTL of the virus-infected cells role in the identification and destruction.

Function:

Has antiviral, antibacterial and anticancer activities.

Subunit:

Monomer.

Subcellular Location:

Secreted.

Similarity:

Belongs to the alpha/beta interferon family.

SWISS:

P01575

Gene ID:

15977

Database links:

[Entrez Gene: 3456](#)Human

[Omim: 147640](#)Human

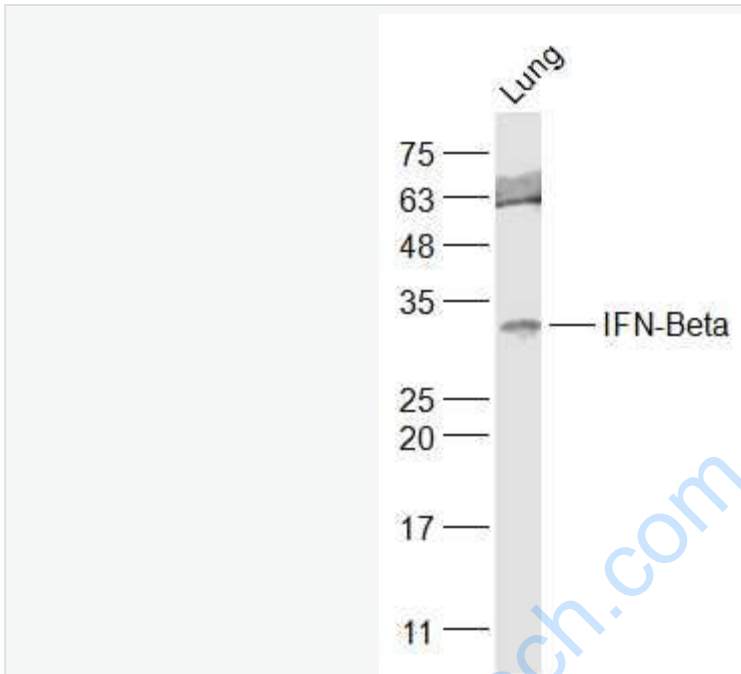
[SwissProt: P01574](#)Human

[Unigene: 93177](#)Human

Important Note:

This product as supplied is intended for research use only, not for use in human, therapeutic or diagnostic applications.

Picture:



Sample:

Lung (Rat) Lysate at 40 ug

Primary: Anti-IFN-Beta (SL23733R) at 1/1000 dilution

Secondary: IRDye800CW Goat Anti-Rabbit IgG at 1/20000 dilution

Predicted band size: 20 kD

Observed band size: 32 kD