



## Rabbit Anti-TAP2 antibody

SL2374R

<b>Product Name:</b>	TAP2
<b>Chinese Name:</b>	ATP结合转运因子2抗体
<b>Alias:</b>	ABC18; ABCB3; Peptide supply factor 2; Peptide transporter PSF2; Peptide transporter TAP2; PSF2; RING 11; TAP 2; Transporter 2 ATP binding cassette sub family B.
<b>Organism Species:</b>	Rabbit
<b>Clonality:</b>	Polyclonal
<b>React Species:</b>	Human,Mouse,Rat,Dog,Pig,Cow,Horse,Rabbit,
<b>Applications:</b>	ELISA=1:500-1000IHC-P=1:400-800IHC-F=1:400-800Flow-Cyt=1µg/TestIF=1:100-500 (Paraffin sections need antigen repair) not yet tested in other applications. optimal dilutions/concentrations should be determined by the end user.
<b>Molecular weight:</b>	75kDa
<b>Cellular localization:</b>	The cell membrane
<b>Form:</b>	Lyophilized or Liquid
<b>Concentration:</b>	1mg/ml
<b>immunogen:</b>	KLH conjugated synthetic peptide derived from human TAP2:451-550/686
<b>Lsotype:</b>	IgG
<b>Purification:</b>	affinity purified by Protein A
<b>Storage Buffer:</b>	0.01M TBS(pH7.4) with 1% BSA, 0.03% Proclin300 and 50% Glycerol.
<b>Storage:</b>	Store at -20 °C for one year. Avoid repeated freeze/thaw cycles. The lyophilized antibody is stable at room temperature for at least one month and for greater than a year when kept at -20°C. When reconstituted in sterile pH 7.4 0.01M PBS or diluent of antibody the antibody is stable for at least two weeks at 2-4 °C.
<b>PubMed:</b>	<a href="#">PubMed</a>
<b>Product Detail:</b>	TAP is an integral transmembrane protein involved in the transport of antigens from the cytoplasm to the endoplasmic reticulum for association with MHC class I molecules. It is a heterodimer of TAP1 and TAP2, and the peptide-binding site is shared between the cytoplasmic loops of TAP1 and TAP2. TAP is inducible by interferon gamma and belongs to the ABC transporter family, MDR subfamily. TAP also acts as a molecular scaffold for the final stage of MHC class I folding, namely the binding of peptide.

Nascent MHC class I molecules associate with TAP via tapasin. TAP is inhibited by the covalent attachment of herpes simplex virus ICP47 protein, which blocks the peptide-binding site of TAP. It is inhibited by human cytomegalovirus US6 glycoprotein, which binds to the luminal side of the TAP complex and inhibits peptide translocation by specifically blocking ATP-binding to TAP and prevents the conformational rearrangement of TAP induced by peptide binding.

**Subunit:**

Heterodimer of TAP1 and TAP2. Interacts with Epstein-Barr virus BLNF2a.

**Subcellular Location:**

Membrane; Multi-pass membrane protein.

**Similarity:**

Belongs to the ABC transporter superfamily. ABCB family. MHC peptide exporter (TC 3.A.1.209) subfamily.

Contains 1 ABC transmembrane type-1 domain.

Contains 1 ABC transporter domain.

**SWISS:**

C9J069

**Gene ID:**

6891

**Database links:**

[Entrez Gene: 6891](#)?/span>Human

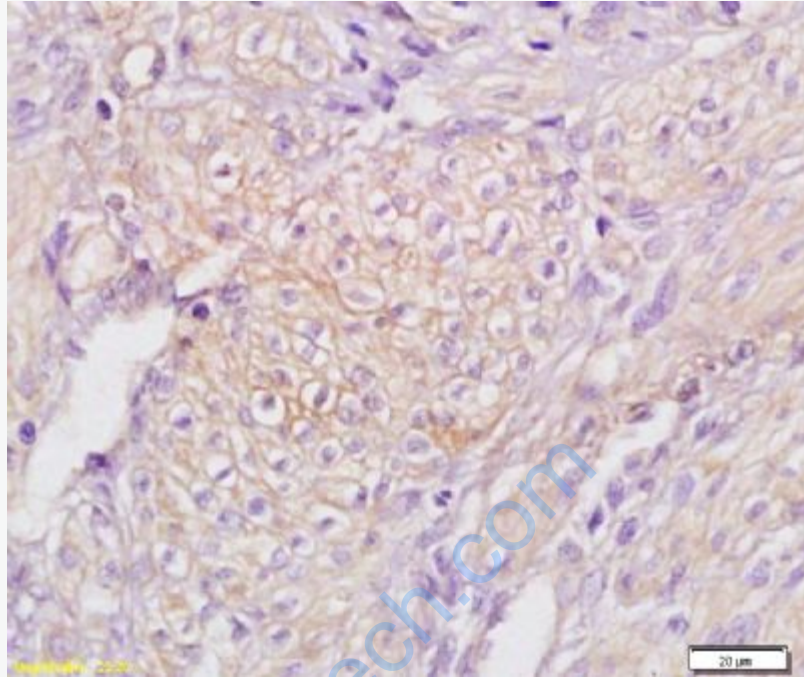
[Omim: 170261](#)?/span>Human

[SwissProt: Q03519](#)?/span>Human

[Unigene: 502](#)?/span>Human

**Important Note:**

This product as supplied is intended for research use only, not for use in human, therapeutic or diagnostic applications.



**Picture:**

Tissue/cell: Human endometrium carcinoma; 4% Paraformaldehyde-fixed and paraffin-embedded;

Antigen retrieval: citrate buffer ( 0.01M, pH 6.0 ), Boiling bathing for 15min; Block endogenous peroxidase by 3% Hydrogen peroxide for 30min; Blocking buffer (normal goat serum,C-0005) at 37°C for 20 min;

Incubation: Anti-TAP2/ABCB3 Polyclonal Antibody, Unconjugated(SL2374R) 1:200, overnight at 4°C, followed by conjugation to the secondary antibody(SP-0023) and DAB(C-0010) staining



Fixed and permeabilized EL-4 cells were labeled with Rabbit Anti- TAP2/ABCB3 Polyclonal Antibody, Unconjugated (SL2374R) at 1:200 followed by conjugation to the secondary antibody Goat Anti-Rabbit IgG FITC conjugated Secondary Antibody

	at 1:200 dilution.
--	--------------------

[www.sunlongbiotech.com](http://www.sunlongbiotech.com)