



Rabbit Anti-LAMP2 antibody

SL2379R

| | |
|--------------------------------|--|
| Product Name: | LAMP2 |
| Chinese Name: | 溶酶体相关膜蛋白2抗体 |
| Alias: | CD107 antigen-like family member B; CD107b; CD107b antigen; Igp110; Igp2; LAMP 2; LAMP 2C; LAMP B; LAMP-2; LAMP2_RAT; LAMPB; LGP110; Lysosomal associated membrane protein 2C; Lysosome associated membrane glycoprotein 2 precursor; Lysosome associated membrane protein 2; Lysosome-associated membrane glycoprotein 2; Lysosome-associated membrane protein 2; MAC3. |
| 文献引用 PubMed : | <p>Specific References(3) SL2379R has been referenced in 3 publications.</p> <p>[IF=5.98]Luks, Lisanne, et al. "Novel insights into renal d-amino acid oxidase accumulation: propiverine changes DAAO localization and peroxisomal size in vivo." Archives of Toxicology (2016): 1-11.IHC-P;Rat. PubMed:26961980</p> <p>[IF=3.23]Sun, Qianqian, et al. "Factors that Affect Pancreatic Islet Cell Autophagy in Adult Rats: Evaluation of a Calorie-Restricted Diet and a High-Fat Diet."PLOS ONE 11.3 (2016): e0151104.IHC-P;Rat. PubMed:26963814</p> <p>[IF=5.23]Kameyama, Hirokazu, et al. "Iowa Mutant Apolipoprotein AI (ApoA-IIowa) Fibrils Target Lysosomes." Scientific Reports 6 (2016): 30391.WB;Human. PubMed:27464946</p> |
| Organism Species: | Rabbit |
| Clonality: | Polyclonal |
| React Species: | Human,Mouse,Rat,Dog,Pig,Cow,Horse,Rabbit, |
| Applications: | WB=1:500-2000ELISA=1:500-1000IHC-P=1:400-800IHC-F=1:400-800Flow-Cyt=1µg/TestIF=1:100-500 (Paraffin sections need antigen repair) |

| | |
|-------------------------------|---|
| | not yet tested in other applications. optimal dilutions/concentrations should be determined by the end user. |
| Molecular weight: | 42kDa |
| Cellular localization: | cytoplasmicThe cell membrane Mitochondrion |
| Form: | Lyophilized or Liquid |
| Concentration: | 1mg/ml |
| immunogen: | KLH conjugated synthetic peptide derived from human LAMP2:301-411/411 |
| Lsotype: | IgG |
| Purification: | affinity purified by Protein A |
| Storage Buffer: | 0.01M TBS(pH7.4) with 1% BSA, 0.03% Proclin300 and 50% Glycerol. |
| Storage: | Store at -20 °C for one year. Avoid repeated freeze/thaw cycles. The lyophilized antibody is stable at room temperature for at least one month and for greater than a year when kept at -20°C. When reconstituted in sterile pH 7.4 0.01M PBS or diluent of antibody the antibody is stable for at least two weeks at 2-4 °C. |
| PubMed: | PubMed |
| Product Detail: | <p>The protein encoded by the LAMP2 gene is a member of a family of membrane glycoproteins. This glycoprotein provides selectins with carbohydrate ligands and is thought to play a role in tumor cell metastasis. It may also function in the protection, maintenance, and adhesion of the lysosome. Alternative splicing of the gene produces two known products, LAMP2a and LAMP2b. Isoform LAMP2a is highly expressed in placenta, lung and liver and has low expression in brain and skeletal muscle. The isoform detected by this antibody, LAMP2b, is highly expressed in skeletal muscle less so in brain, placental, lung, kidney and pancreas and has very low expression in liver.</p> <p>Function: Implicated in tumor cell metastasis. May function in protection of the lysosomal membrane from autodigestion, maintenance of the acidic environment of the lysosome, adhesion when expressed on the cell surface (plasma membrane), and inter-and intracellular signal transduction. Protects cells from the toxic effects of methylating mutagens.</p> <p>Subcellular Location: Cell membrane; Single-pass type I membrane protein. Endosome membrane; Single-pass type I membrane protein. Lysosome membrane; Single-pass type I membrane protein. Note=This protein shuttles between lysosomes, endosomes, and the plasma membrane.</p> <p>Post-translational modifications: O- and N-glycosylated; some of the N-glycans attached to Lamp-2 are polylactosaminoglycans.</p> <p>Similarity: Belongs to the LAMP family.</p> <p>SWISS: P13473</p> |

Gene ID:
3920

Database links:

[Entrez Gene: 3920](#)Human

[Entrez Gene: 16784](#)Mouse

[Omim: 309060](#)Human

[SwissProt: P13473](#)Human

[SwissProt: P17047](#)Mouse

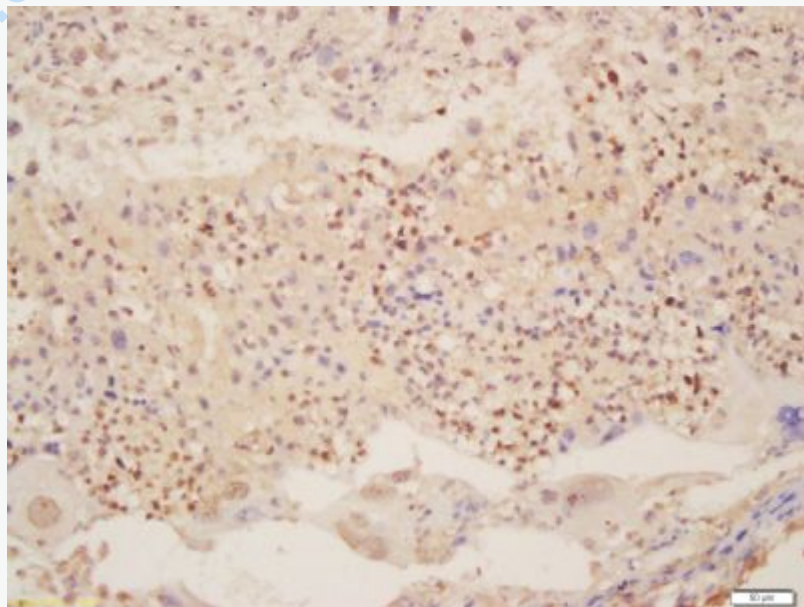
[Unigene: 496684](#)Human

[Unigene: 486](#)Mouse

Important Note:

This product as supplied is intended for research use only, not for use in human, therapeutic or diagnostic applications.

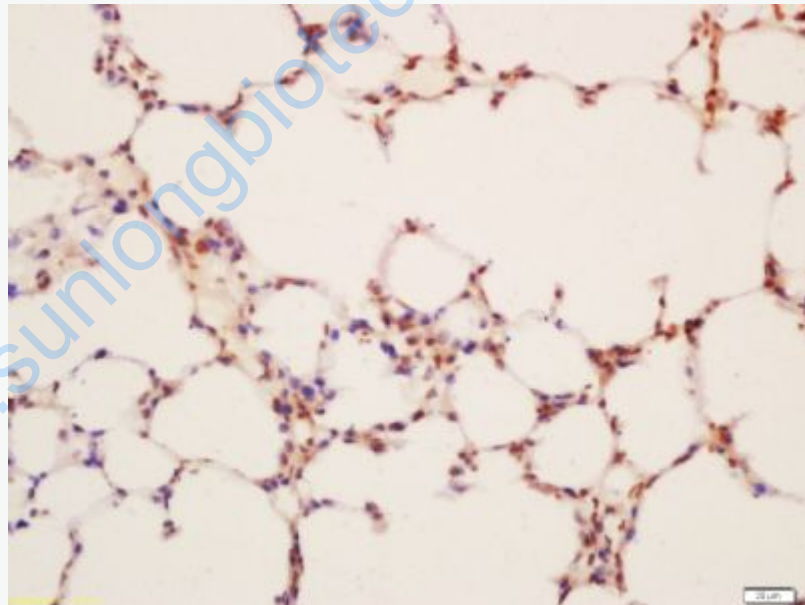
Picture:



Tissue/cell: mouse placenta tissue; 4% Paraformaldehyde-fixed and paraffin-embedded;

Antigen retrieval: citrate buffer (0.01M, pH 6.0), Boiling bathing for 15min; Block endogenous peroxidase by 3% Hydrogen peroxide for 30min; Blocking buffer (normal goat serum,C-0005) at 37°C for 20 min;

Incubation: Anti-LAMP2 Polyclonal Antibody, Unconjugated(SL2379R) 1:200, overnight at 4°C, followed by conjugation to the secondary antibody(SP-0023) and DAB(C-0010) staining

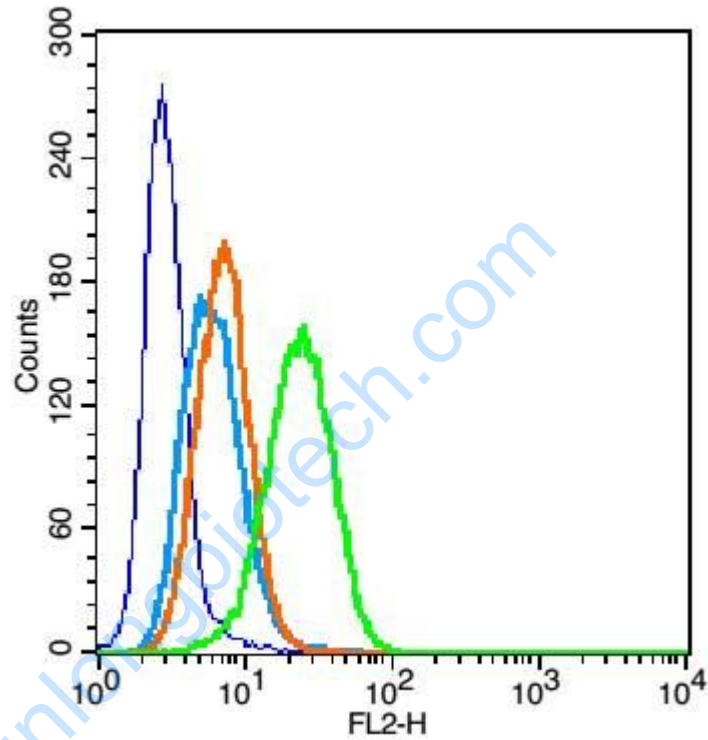


Tissue/cell: mouse lung tissue; 4% Paraformaldehyde-fixed and paraffin-embedded;

Antigen retrieval: citrate buffer (0.01M, pH 6.0), Boiling bathing for 15min; Block endogenous peroxidase by 3% Hydrogen peroxide for 30min; Blocking buffer (normal goat serum,C-0005) at 37°C for 20 min;

Incubation: Anti-LAMP2 Polyclonal Antibody, Unconjugated(SL2379R) 1:200,

overnight at 4°C, followed by conjugation to the secondary antibody(SP-0023) and DAB(C-0010) staining

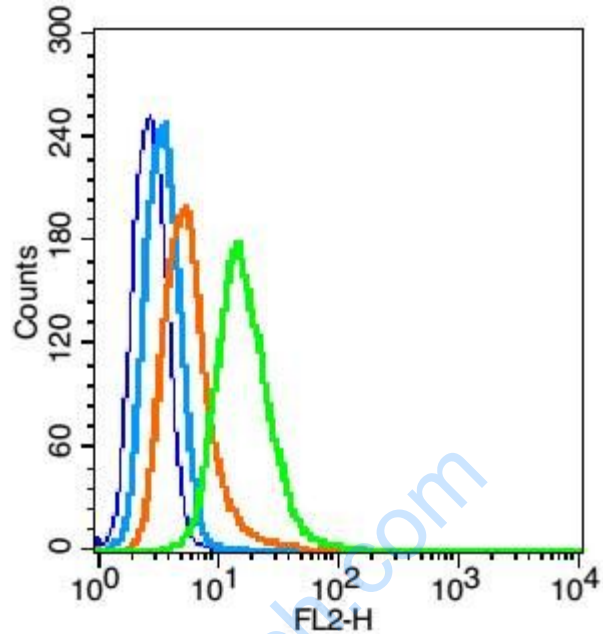


Blank control(blue):U937 (fixed with 2% paraformaldehyde (10 min)).

Primary Antibody:Rabbit Anti- LAMP2 antibody(SL2379R), Dilution: 1µg in 100 µL 1X PBS containing 0.5% BSA;

Isotype Control Antibody: Rabbit IgG(orange) ,used under the same conditions);

Secondary Antibody: Goat anti-rabbit IgG-PE(white blue), Dilution: 1:200 in 1 X PBS containing 0.5% BSA.



Blank control(blue): HELA (fixed with 2% paraformaldehyde (10 min), then permeabilized with 90% ice-cold methanol for 30 min on ice).

Primary Antibody:Rabbit Anti-LAMP2 Receptor beta antibody(SL2379R), Dilution: 5 μ g in 100 μ L 1X PBS containing 0.5% BSA;

Isotype Control Antibody: Rabbit IgG(orange) ,used under the same conditions);

Secondary Antibody: Goat anti-rabbit IgG-PE(white blue), Dilution: 1:200 in 1 X PBS containing 0.5% BSA.