



## Rabbit Anti-ATF3 antibody

SL23807R

<b>Product Name:</b>	ATF3
<b>Chinese Name:</b>	活化转录因子3抗体
<b>Alias:</b>	Activating transcription factor 3; ATF3deltaZip2; ATF3deltaZip2c; ATF3deltaZip3; cAMP dependent transcription factor ATF3; Cyclic AMP dependent transcription factor ATF3; Cyclic AMP-dependent transcription factor ATF-3; TF3_HUMAN; cAMP-dependent transcription factor ATF-3; cyclic AMP-dependent transcription factor ATF-3 isoform 1.
<b>Organism Species:</b>	Rabbit
<b>Clonality:</b>	Polyclonal
<b>React Species:</b>	Human,Mouse,Rat,Chicken,Dog,Pig,Cow,Horse,Rabbit,Sheep,
<b>Applications:</b>	ELISA=1:500-1000IHC-P=1:400-800IHC-F=1:400-800ICC=1:100-500IF=1:100-500 (Paraffin sections need antigen repair) not yet tested in other applications. optimal dilutions/concentrations should be determined by the end user.
<b>Molecular weight:</b>	20kDa
<b>Cellular localization:</b>	The nucleus
<b>Form:</b>	Lyophilized or Liquid
<b>Concentration:</b>	1mg/ml
<b>immunogen:</b>	KLH conjugated synthetic peptide derived from human ATF3:
<b>Lsotype:</b>	IgG
<b>Purification:</b>	affinity purified by Protein A
<b>Storage Buffer:</b>	0.01M TBS(pH7.4) with 1% BSA, 0.03% Proclin300 and 50% Glycerol.
<b>Storage:</b>	Store at -20 °C for one year. Avoid repeated freeze/thaw cycles. The lyophilized antibody is stable at room temperature for at least one month and for greater than a year when kept at -20°C. When reconstituted in sterile pH 7.4 0.01M PBS or diluent of antibody the antibody is stable for at least two weeks at 2-4 °C.
<b>PubMed:</b>	<a href="#">PubMed</a>
<b>Product Detail:</b>	This gene encodes a member of the mammalian activation transcription factor/cAMP responsive element-binding (CREB) protein family of transcription factors. This gene is induced by a variety of signals, including many of those encountered by cancer cells,

and is involved in the complex process of cellular stress response. Multiple transcript variants encoding different isoforms have been found for this gene. It is possible that alternative splicing of this gene may be physiologically important in the regulation of target genes. [provided by RefSeq, Apr 2011].

**Function:**

This protein binds the cAMP response element (CRE) (consensus: 5'-GTGACGT[AC][AG]-3'), a sequence present in many viral and cellular promoters. Represses transcription from promoters with ATF sites. It may repress transcription by stabilizing the binding of inhibitory cofactors at the promoter. Isoform 2 activates transcription presumably by sequestering inhibitory cofactors away from the promoters.

**Subunit:**

Binds DNA as a homodimer or a heterodimer.

**Subcellular Location:**

Nucleus.

**Similarity:**

Belongs to the bZIP family. ATF subfamily.  
Contains 1 bZIP domain.

**SWISS:**

P18847

**Gene ID:**

467

**Database links:**

[Entrez Gene: 467](#)Human

[Entrez Gene: 11910](#)Mouse

[Entrez Gene: 25389](#)Rat

[Omim: 603148](#)Human

[SwissProt: P18847](#)Human

[SwissProt: Q60765](#)Mouse

[SwissProt: P29596](#)Rat

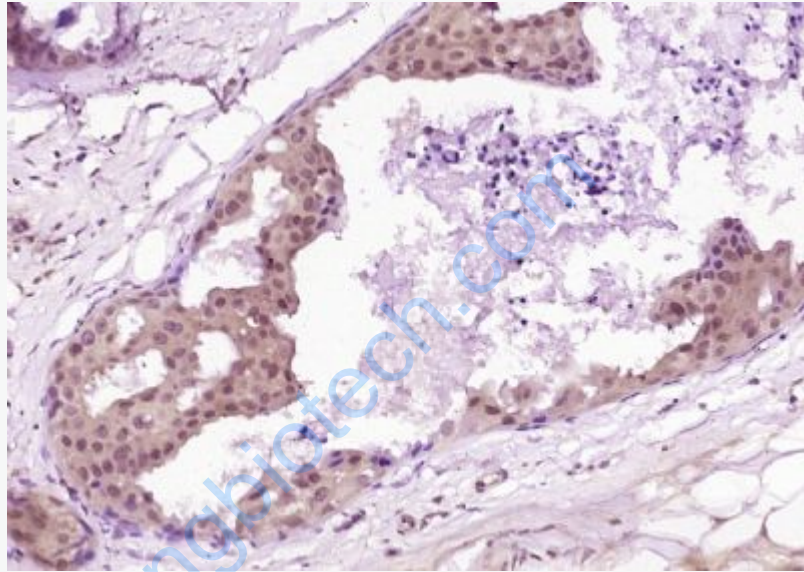
[Unigene: 460](#)Human

[Unigene: 2706](#)Mouse

[Unigene: 9664](#)Rat

**Important Note:**

This product as supplied is intended for research use only, not for use in human, therapeutic or diagnostic applications.



**Picture:**

Paraformaldehyde-fixed, paraffin embedded (Human breast carcinoma); Antigen retrieval by boiling in sodium citrate buffer (pH6.0) for 15min; Block endogenous peroxidase by 3% hydrogen peroxide for 20 minutes; Blocking buffer (normal goat serum) at 37°C for 30min; Antibody incubation with (ATF3) Polyclonal Antibody, Unconjugated (SL23807R) at 1:400 overnight at 4°C, followed by operating according to SP Kit(Rabbit) (sp-0023) instructions and DAB staining.